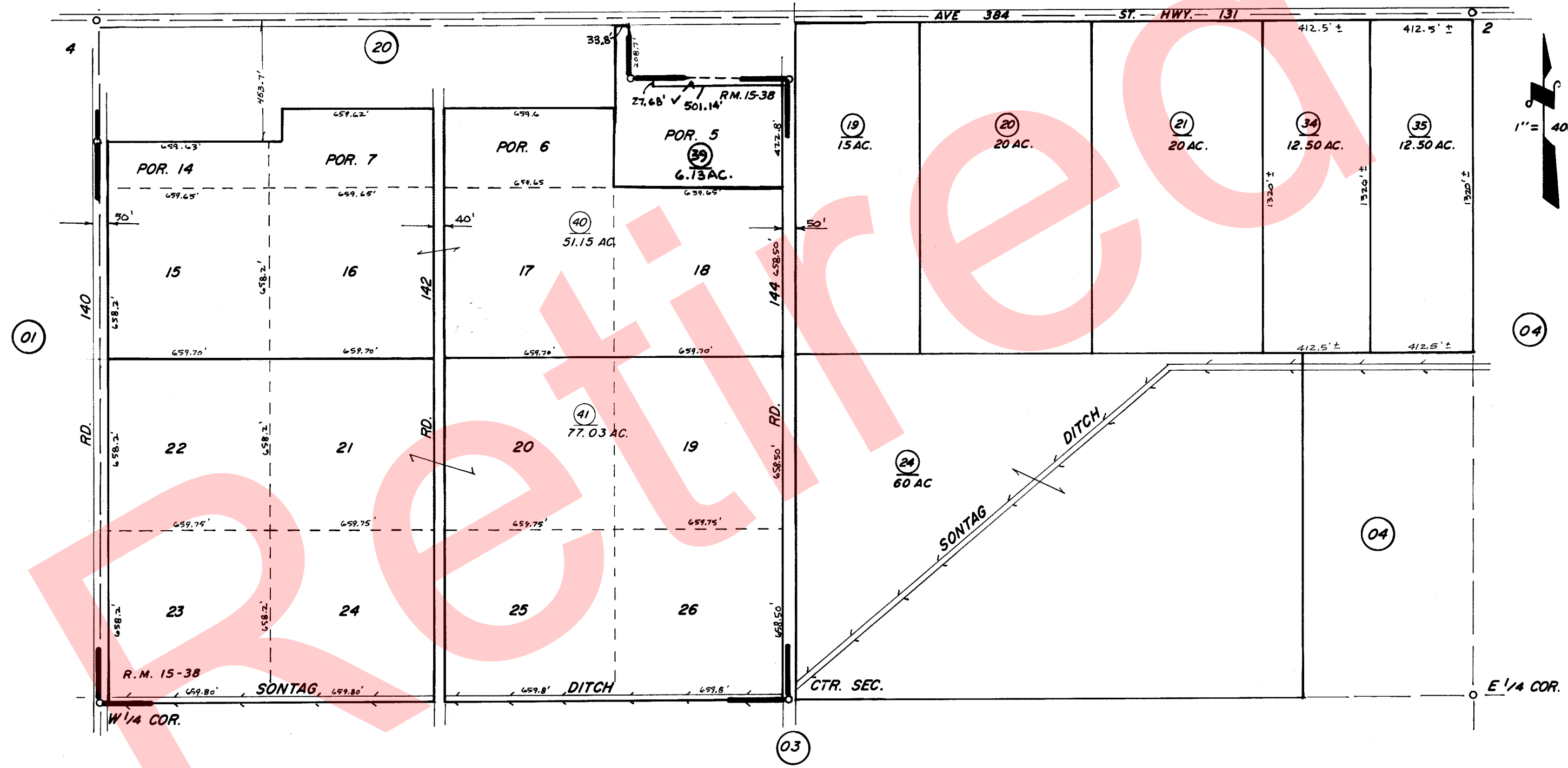


BK. 35



POR. ADAMS VINEYARD TRACT, R.M. 15-38

ASSESSOR'S MAPS BK. 50, PG. 02
COUNTY OF TULARE, CALIF.

NOTE-ASSESSOR'S BLOCK NUMBERS SHOWN IN ELLIPSES
ASSESSOR'S PARCEL NUMBERS SHOWN IN CIRCLES