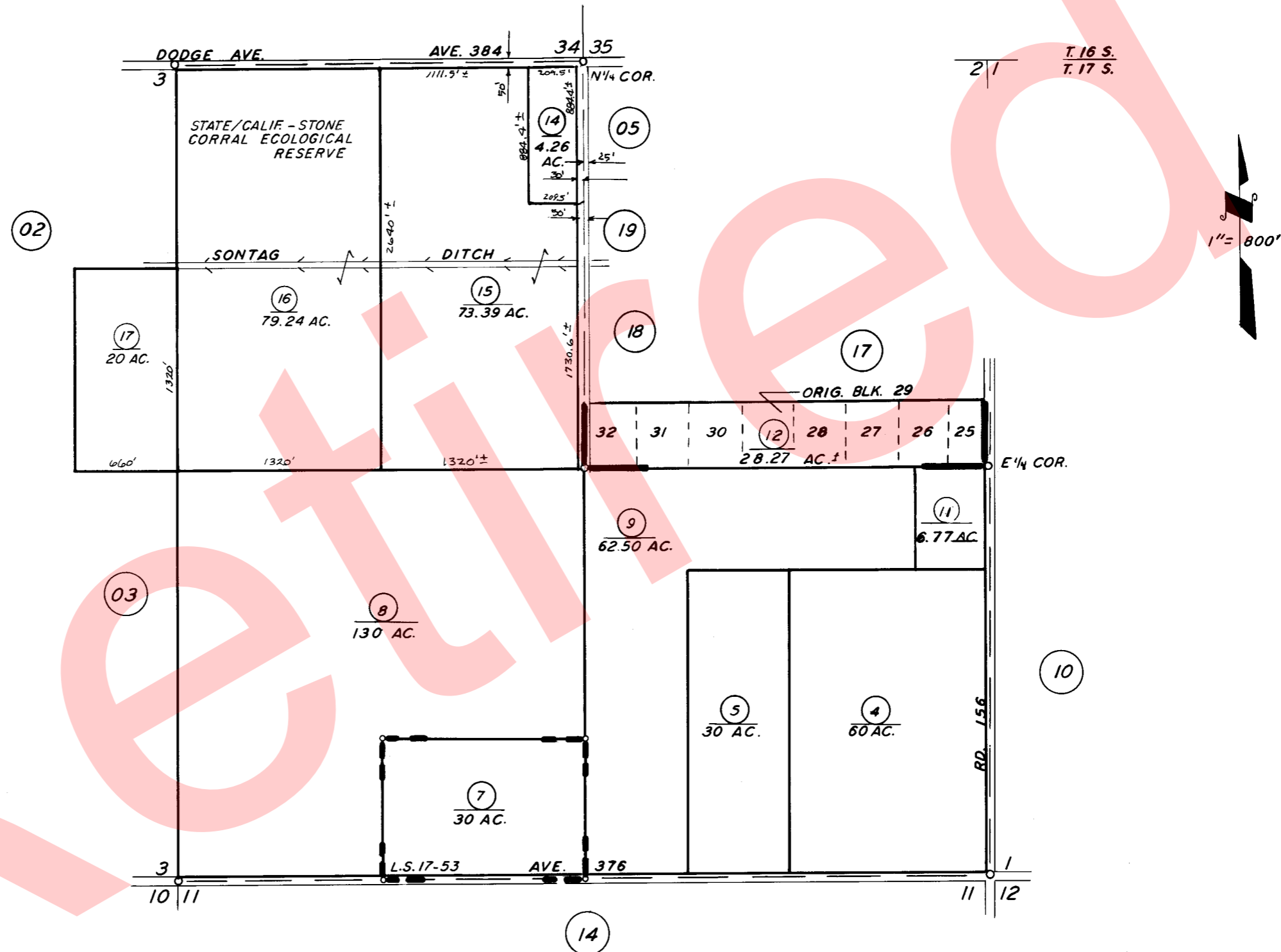


SEC. 2, EXCEPT POR. NE 1/4 T.17 S., R.25 E., M.D.B & M.

TAX CODE AREA  
138-005  
68-029

50-04

BK. 35



RECORD OF SURVEY L.S. 17-53  
POR. SEVILLE TOWNSITE, R.M. 15-4  
BLOCKS 25-32

ASSESSOR'S MAPS BK. 50, PG. 04  
COUNTY OF TULARE, CALIF.

NOTE - ASSESSOR'S BLOCK NUMBERS SHOWN IN ELLIPSES  
ASSESSOR'S PARCEL NUMBERS SHOWN IN CIRCLES

