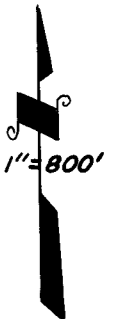
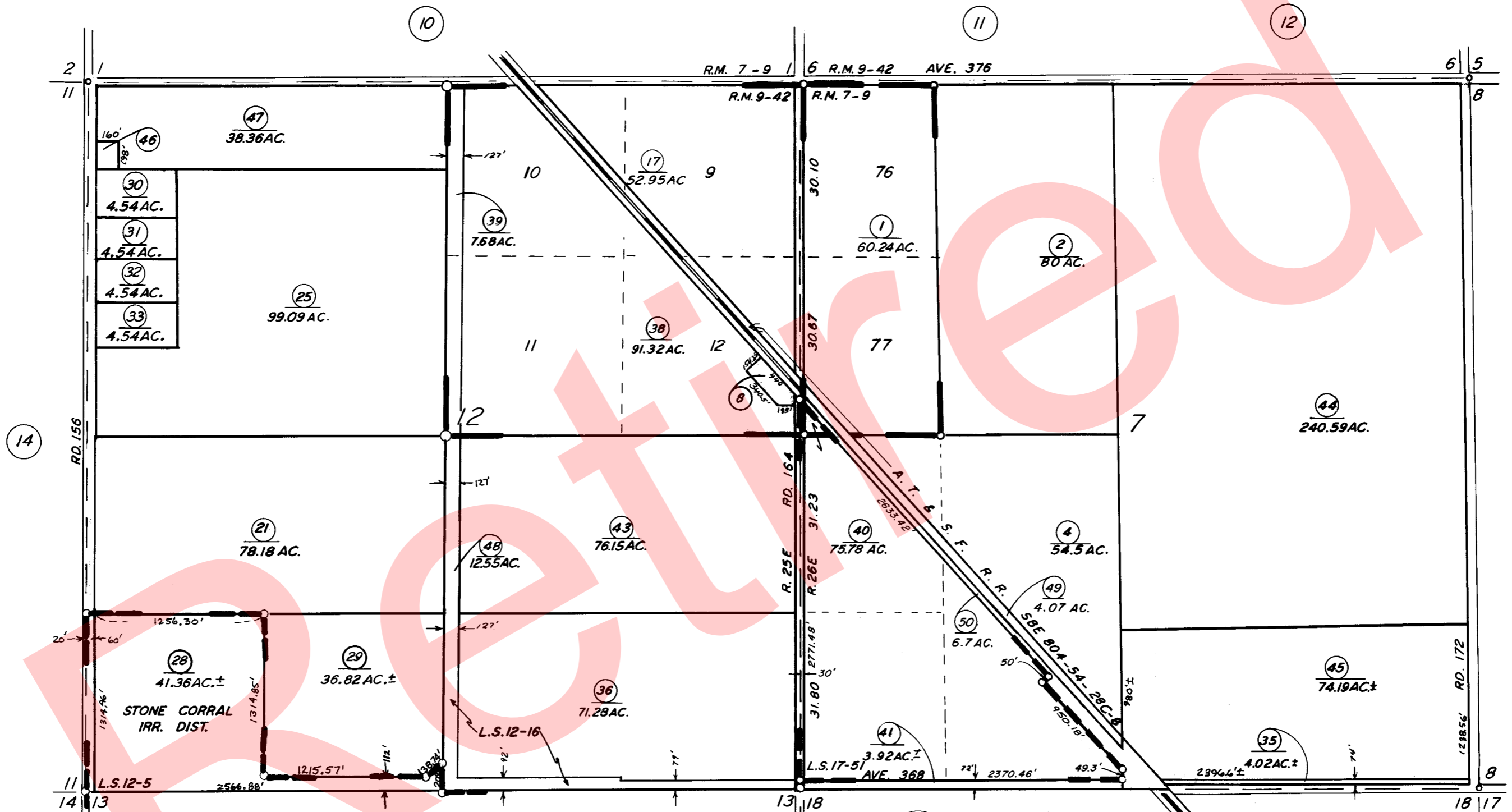


69
72

SEC. 12, T.17 S., R.25 E., & SEC. 7, T.17 S., R.26 E., M.D.B. & M.

TAX CODE AREA
138-000

50-13



BK.53

POR. CITRUSVILLE COL.,
 POR. SHEPHERD ESTATE TR.,
 POR. RECORD OF SURVEY,
 POR. RECORD OF SURVEY,
 RECORD OF SURVEY,

R.M. 7-9
 R.M. 9-42
 L.S. 12-5
 L.S. 12-16
 L.S. 17-51

BK. 52

ASSESSOR'S MAPS BK. 50, PG. 13

COUNTY OF TULARE, CALIF.

NOTE — ASSESSOR'S BLOCK NUMBERS SHOWN IN ELLIPSES
 ASSESSOR'S PARCEL NUMBERS SHOWN IN CIRCLES

