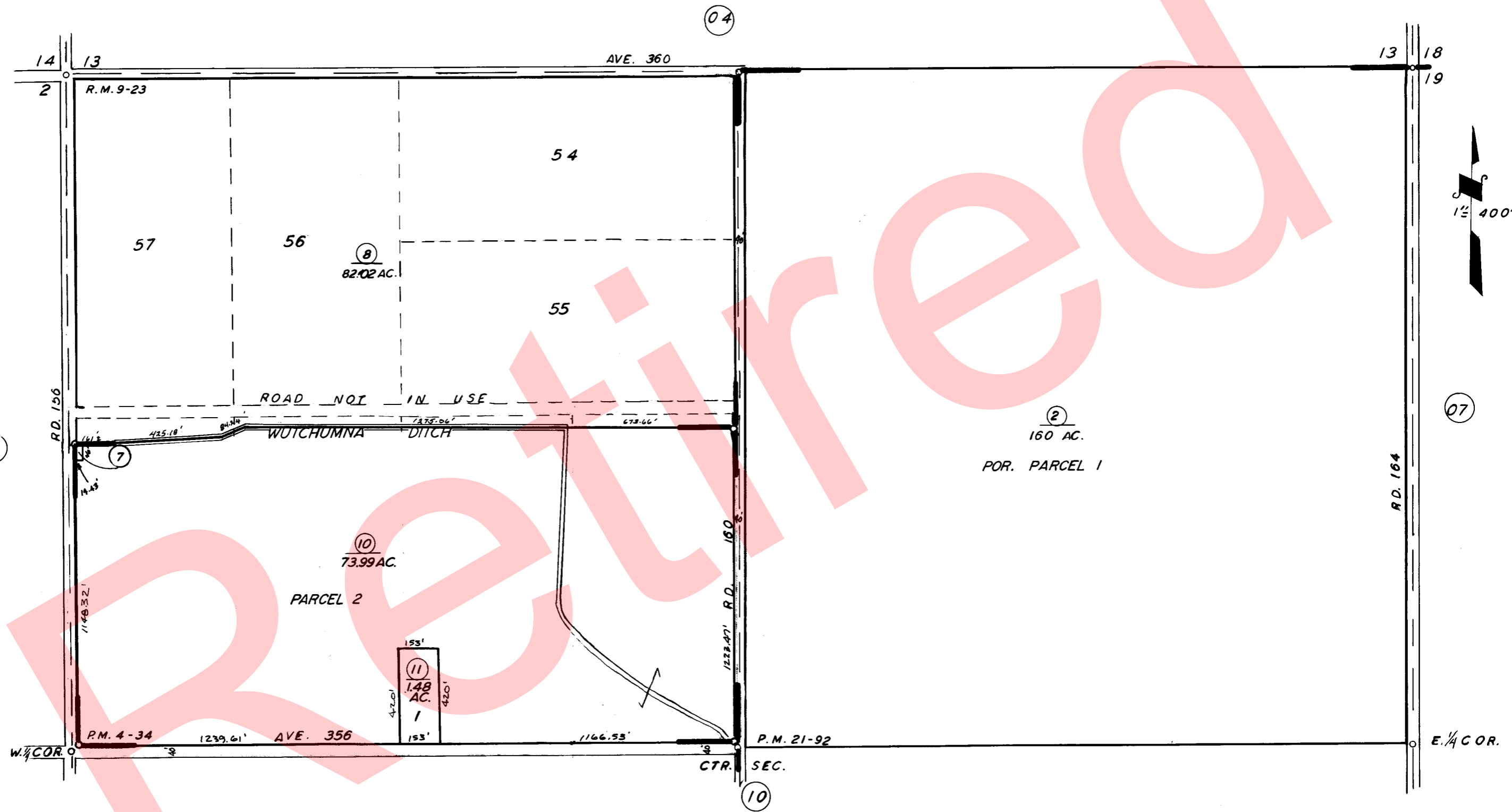


N 1/2 SEC. 24, T. 17 S., R. 25 E. M. D. B. & M.

TAX CODE AREA 52-09  
138-000  
138-003



POR. ORANGE HEIGHTS R.M. 9-23  
PARCEL MAP 334, P.M. 4-34  
POR. PARCEL MAP 2091, P.M. 2192

ASSESSOR'S MAPS BK. 52, PG. 09  
COUNTY OF TULARE, CALIF.

NOTE — ASSESSOR'S BLOCK NUMBERS SHOWN IN ELLIPSES  
ASSESSOR'S PARCEL NUMBERS SHOWN IN CIRCLES