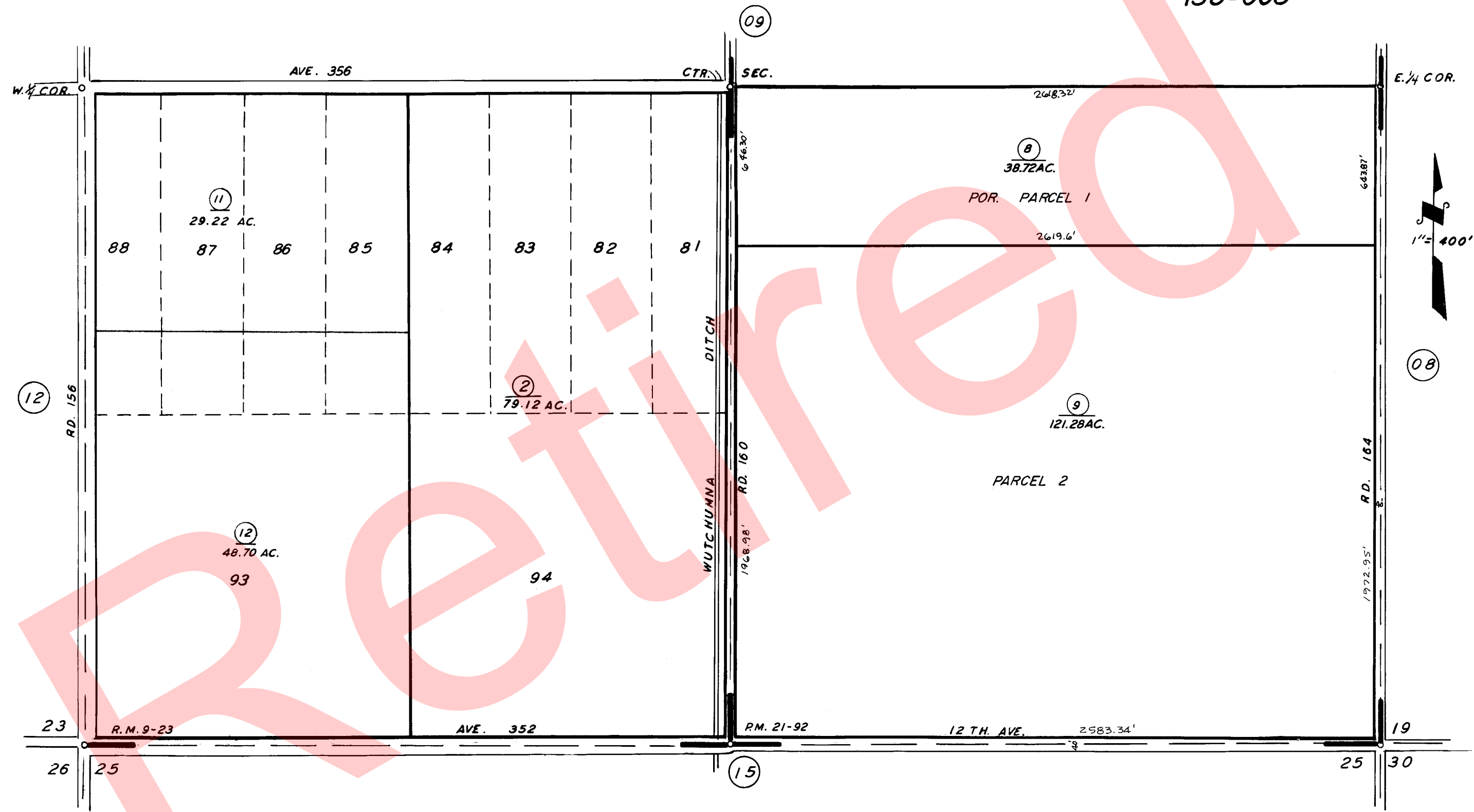


S 1/2 SEC. 24, T. 17S., R. 25E. M. D. B. & M.

TAX CODE AREA 52-10  
138-000  
138-003



POR. ORANGE HEIGHTS R.M. 9-23  
POR. PARCEL MAP 2091, P.M. 21-92

ASSESSOR'S MAPS BK. 52, PG. 10

COUNTY OF TULARE, CALIF.

NOTE — ASSESSOR'S BLOCK NUMBERS SHOWN IN ELLIPSES  
ASSESSOR'S PARCEL NUMBERS SHOWN IN CIRCLES

