

DISCLAIMER

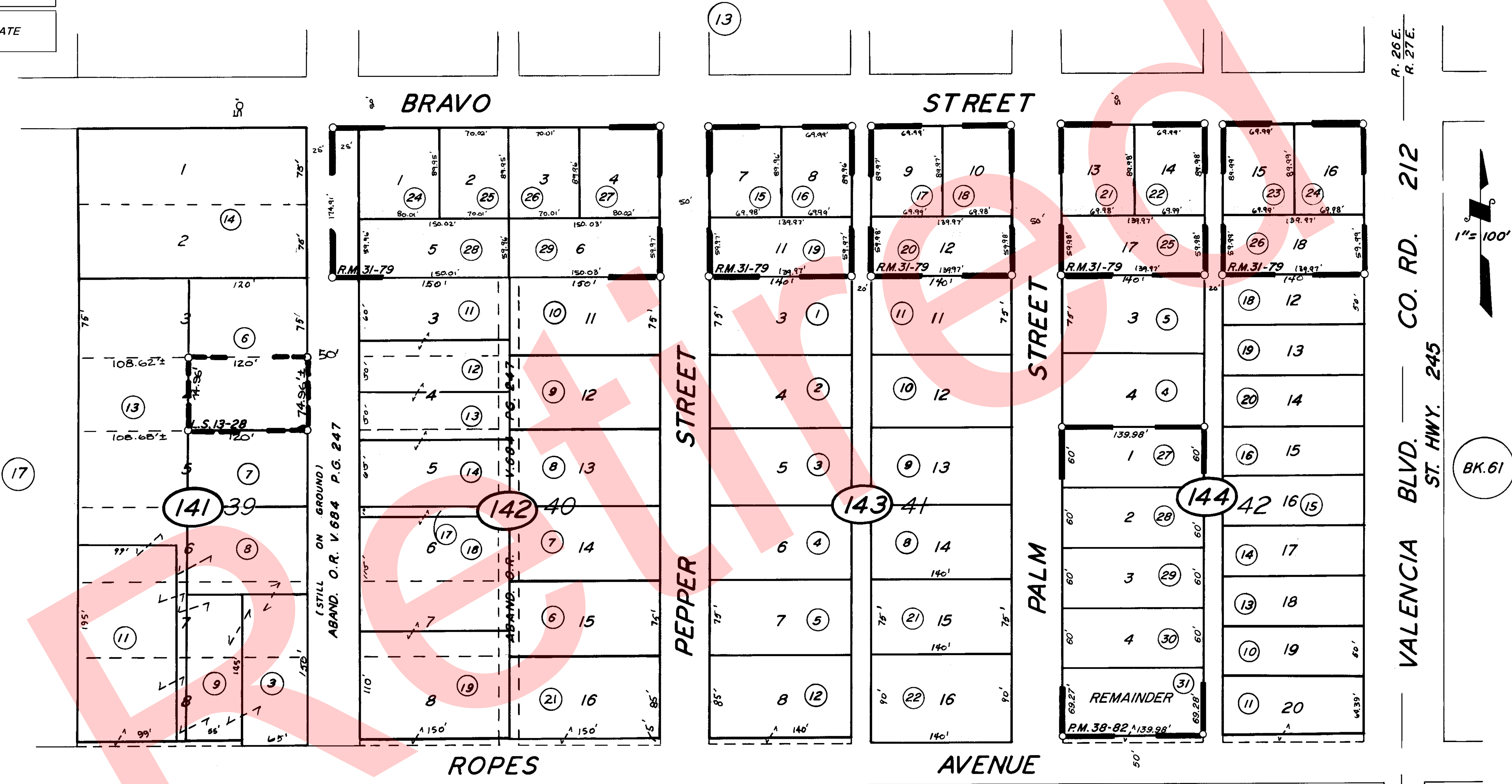
THIS MAP WAS PREPARED FOR LOCAL PROPERTY ASSESSMENT PURPOSES ONLY. THE PARCELS SHOWN HEREON MAY NOT COMPLY WITH STATE AND LOCAL SUBDIVISION ORDINANCES. NO LIABILITY IS ASSUMED FOR THE USE OF THE INFORMATION HEREON.

REVISED: 01/13/2009
REASON: ADJ. PG. UPDATE
CAD TECH: JRS

S 1/2 OF NE 1/4 OF NE 1/4 OF SEC.36, T.17S., R.26E., M.D.B.&M.

TAX CODE AREA
007-006

060-14



BRAVO ESTATES
TOWNSITE OF WOODLAKE
RECORD OF SURVEY
PARCEL MAP 3779,

R. M. 31-79
R.M. 11-23
L.S. 13-28
P.M. 38-82

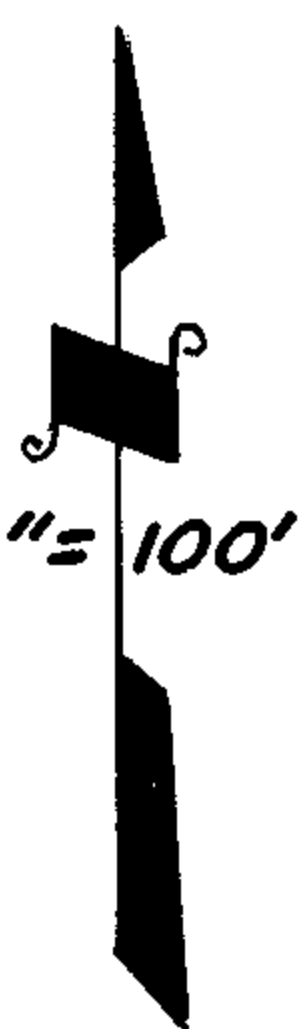
24

VICINITY OF WOODLAKE
ASSESSOR'S MAPS BK. 060, PG. 14
COUNTY OF TULARE, CALIF.

NOTE — ASSESSOR'S BLOCK NUMBERS SHOWN IN ELLIPSES
ASSESSOR'S PARCEL NUMBERS SHOWN IN CIRCLES



R. 26E.
R. 27E.
VALENCIA BLVD. CO. RD. 212
ST. HWY. 245



BK. 61

1" = 100'