

**DISCLAIMER**

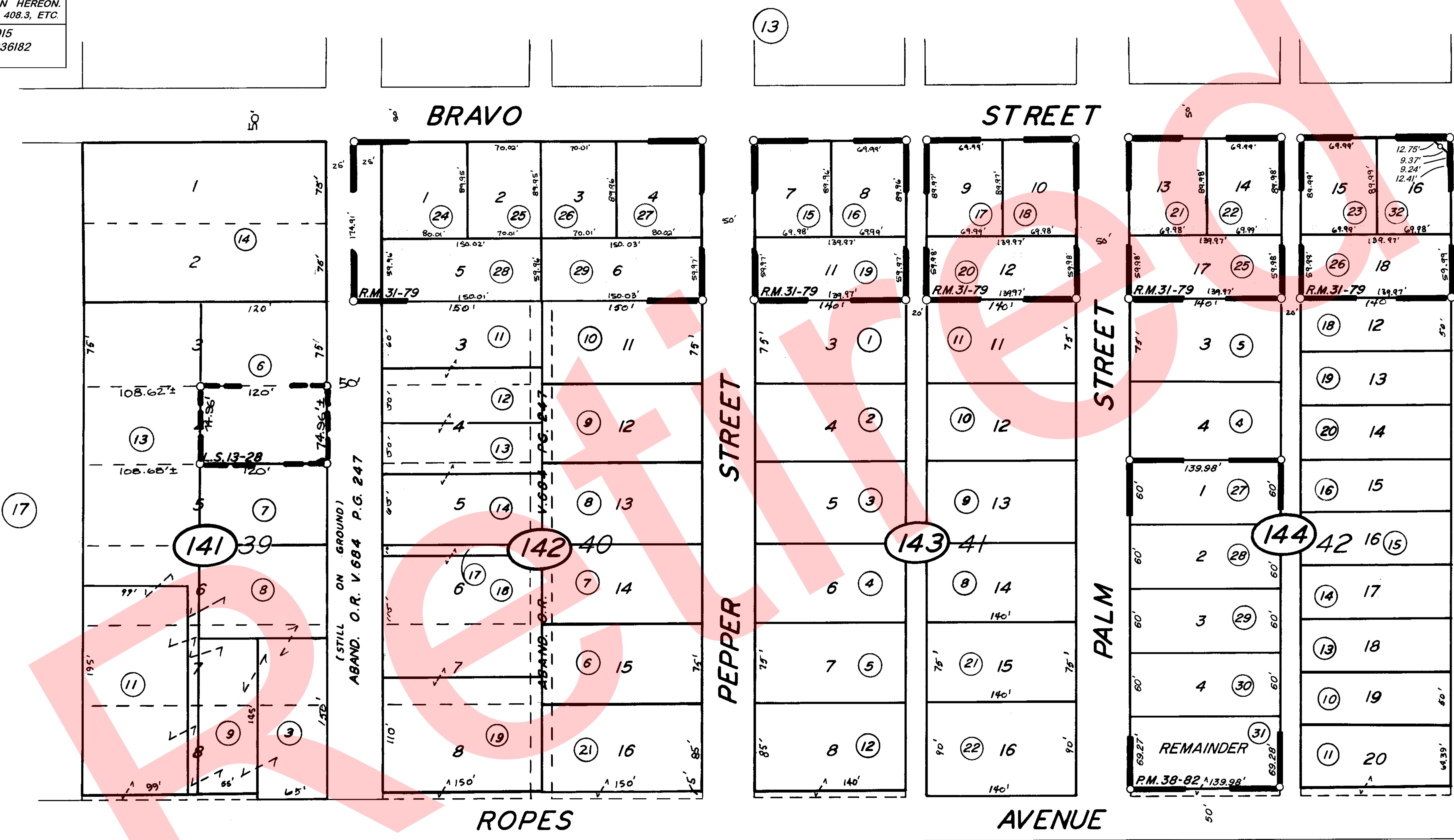
THIS MAP WAS PREPARED FOR LOCAL PROPERTY ASSESSMENT PURPOSES ONLY. THE PARCELS SHOWN HEREON MAY NOT COMPLY WITH STATE AND LOCAL SUBDIVISION ORDINANCES. NO LIABILITY IS ASSUMED FOR THE USE OF THE INFORMATION HEREON. R & T CODE SEC. 327, 408.3, ETC.

REVISED: 7/09/2015  
REASON: 2014-0036182  
CAD TECH: NFL

S 1/2 OF NE 1/4 OF NE 1/4 OF SEC.36, T.17S., R.26E., M.D.B.&M.

TAX CODE AREA  
007-006

060-14



R. 26E.  
R. 27E.  
VALENCIA BLVD.—STATE HWY. 245—(RD. 212)

**BRAVO ESTATES**  
TOWNSITE OF WOODLAKE  
RECORD OF SURVEY  
PARCEL MAP 3779,

R. M. 31-79  
R.M. 11-23  
L.S. 13-28  
P.M.38-82

**VICINITY OF WOODLAKE**  
ASSESSOR'S MAPS BK. 060, PG. 14  
COUNTY OF TULARE, CALIF.

NOTE — ASSESSOR'S BLOCK NUMBERS SHOWN IN ELLIPSES  
ASSESSOR'S PARCEL NUMBERS SHOWN IN CIRCLES

BK.61

24

13

