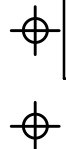


**DISCLAIMER**

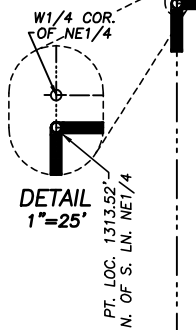
THIS MAP WAS PREPARED FOR LOCAL PROPERTY ASSESSMENT PURPOSES ONLY AND THE PARCELS SHOWN HEREON MAY NOT COMPLY WITH STATE AND LOCAL SUBDIVISION ORDINANCES, AND NO LIABILITY IS ASSUMED FOR THE USE OF THE INFORMATION SHOWN HEREON.



W1/4 COR. NE 1/4

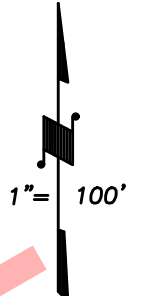
WUTCHUMNA AVE.

CTR. NE1/4



20

PT. LOC. 1313.52' N. OF AND 660' E. OF CTR. SEC. 25



BASIS OF BEARINGS: P.M. 49-73

WOODLAKE UNION ELEM. SCH. DIST.  
FRANCIS J. WHITE LEARNING CENTER

LULU BLAIR KRESS  
PRESCHOOL

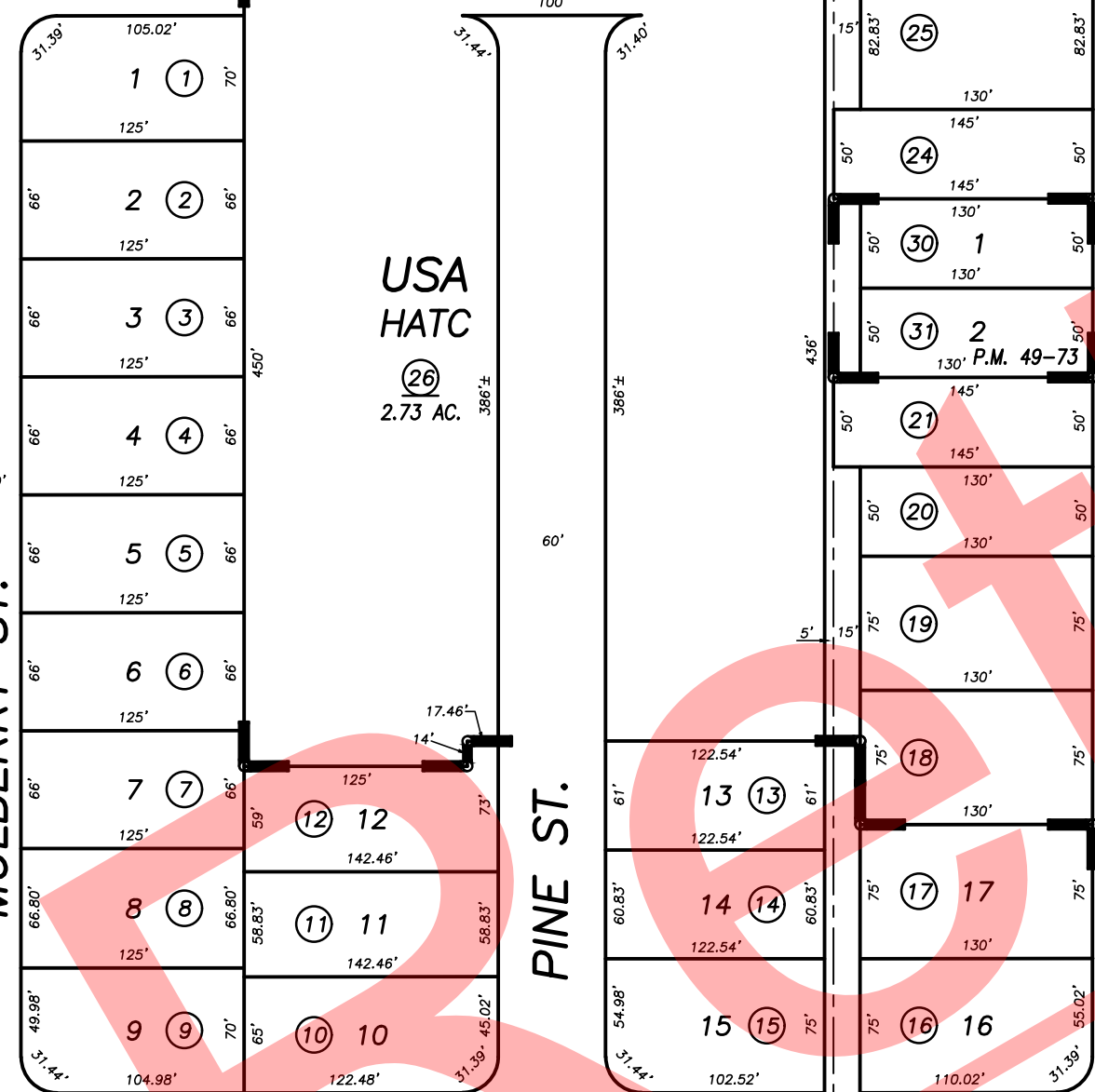
BRAVO LAKE  
HIGH SCHOOL

MULBERRY ST.

PINE ST.

CYPRESS ST.

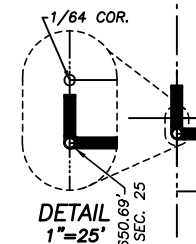
SEQUOIA AVE.



27

33  
11.16 AC.

03



MULBERRY HEIGHTS, R.M. 28-55  
PARCEL MAP 4868, P.M. 49-73

PT. LOC. 680.69' N. OF AND 680' E. OF CTR. SEC. 25

R.M. 28-55

04

CITY OF WOODLAKE  
ASSESSOR'S MAPS BK. 060 , PG. 21  
COUNTY OF TULARE, CALIFORNIA, U.S.A.