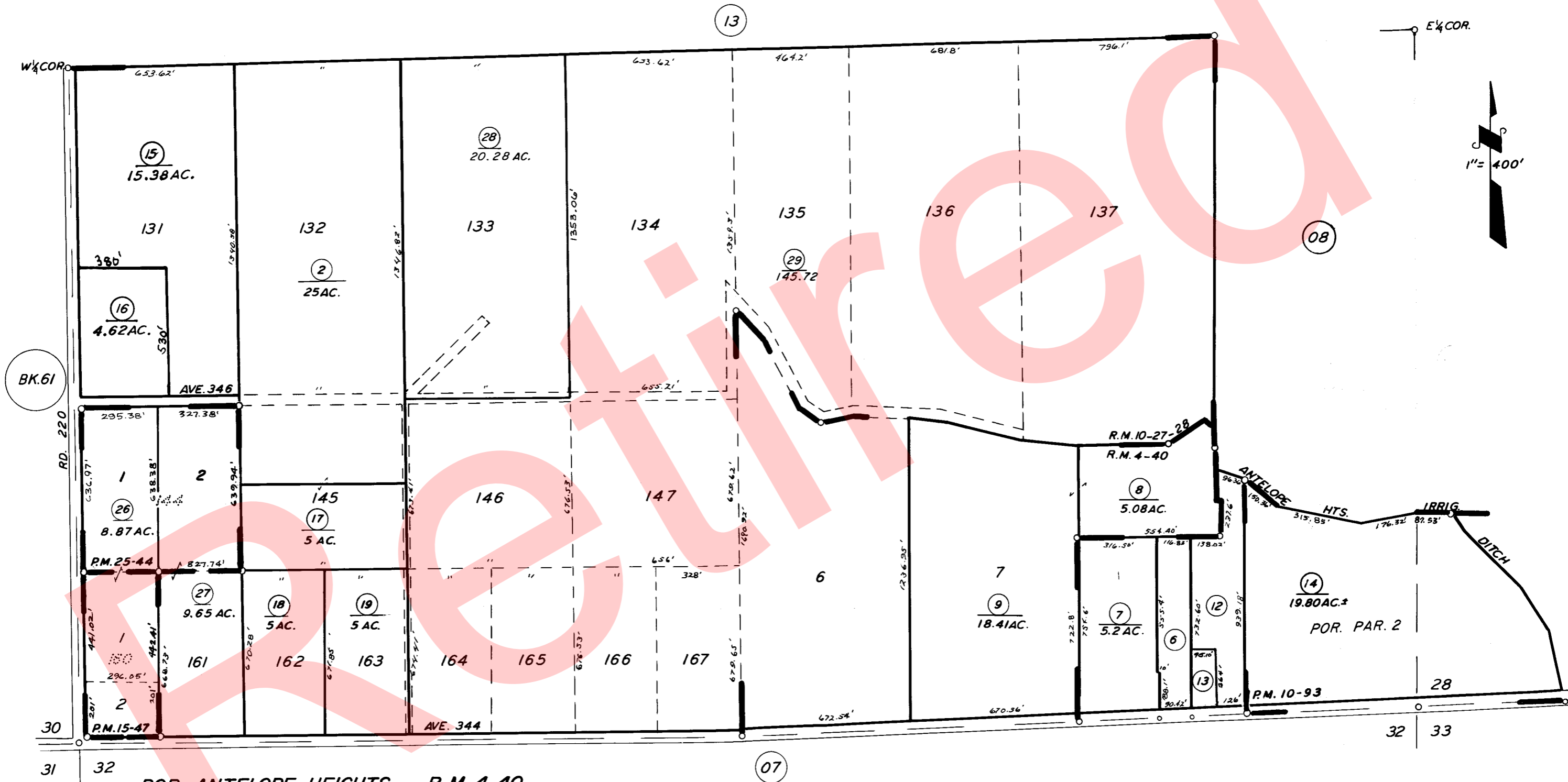


S 1/2 SEC. 29, & POR. SW 1/4 SEC. 28, T.17S., R.27E.,
M. D. B. & M.

TAX CODE AREA **64-12**
161-011
161-014



POR. ANTELOPE HEIGHTS, R. M. 4-40
POR. WOODLAKE SHEET NO. 1, R. M. 10-27 & 28
POR. PARCEL MAP 992, P. M. 10-93
PARCEL MAP 1446, P. M. 15-47
PARCEL MAP 2443, P. M. 25-44

ASSESSOR'S MAPS BK. 64, PG. 12.
COUNTY OF TULARE, CALIF.

NOTE — ASSESSOR'S BLOCK NUMBERS SHOWN IN ELLIPSES
ASSESSOR'S PARCEL NUMBERS SHOWN IN CIRCLES