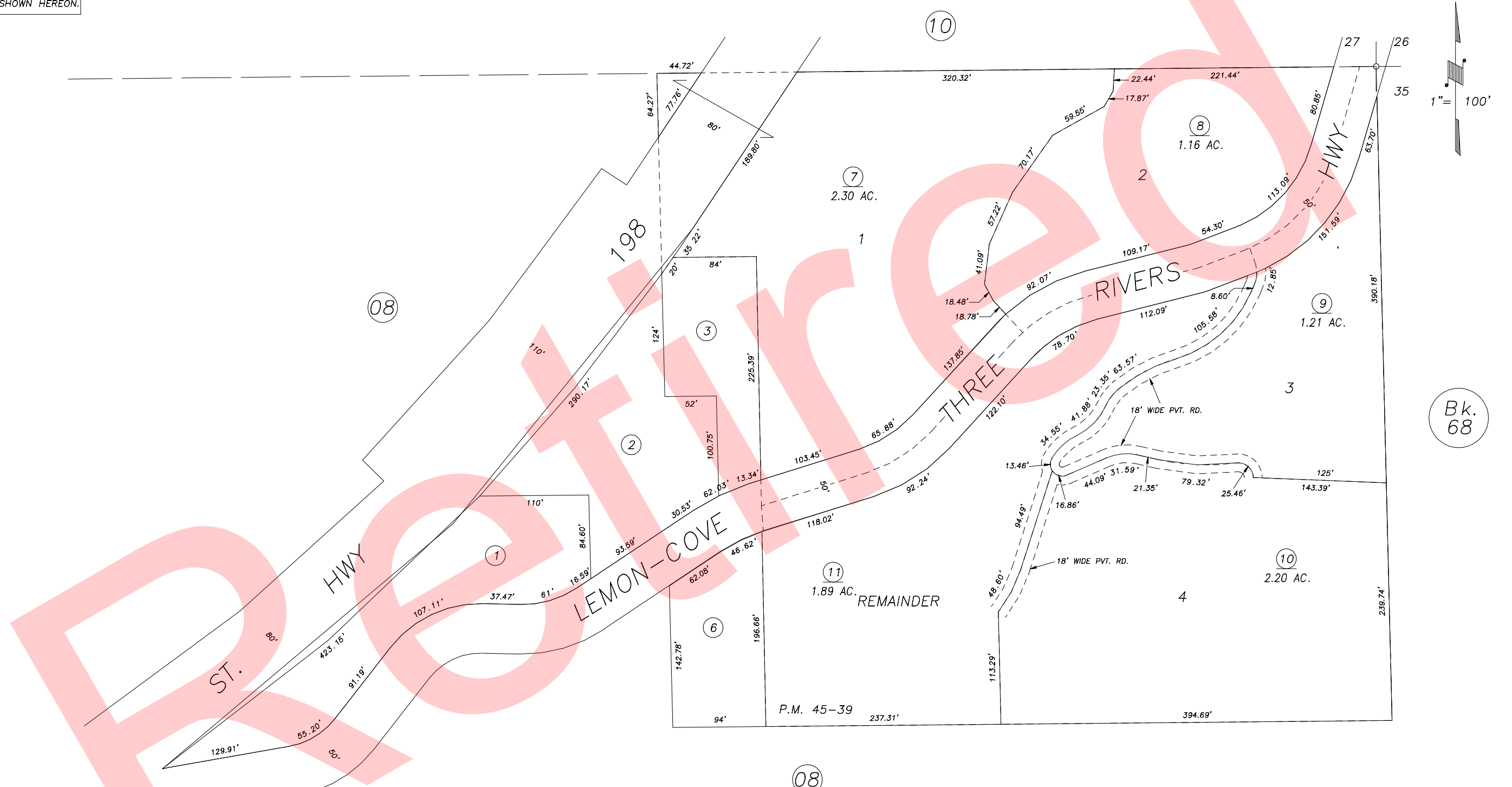


DISCLAIMER
 THIS MAP WAS PREPARED FOR LOCAL PROPERTY ASSESSMENT PURPOSES ONLY AND THE PARCELS SHOWN HEREON MAY NOT COMPLY WITH STATE AND LOCAL SUBDIVISION ORDINANCES, AND NO LIABILITY IS ASSUMED FOR THE USE OF THE INFORMATION SHOWN HEREON.

POR. OF NE 1/4 SEC. 34, T.17S., R.28E., M.D.B.& M.

Tax Area Code 066-09
 146-009



P.M. 45-39	REVISION	DATE	JGM	BY

PARCEL MAP NO. 4434, 45-39

ASSESSOR'S MAPS BK. 066 , PG. 09 .
 COUNTY OF TULARE, CALIF.

NOTE: Assessor's Block Numbers Shown in Ellipses
 Assessor's Parcel Numbers Shown in Circles

01/02