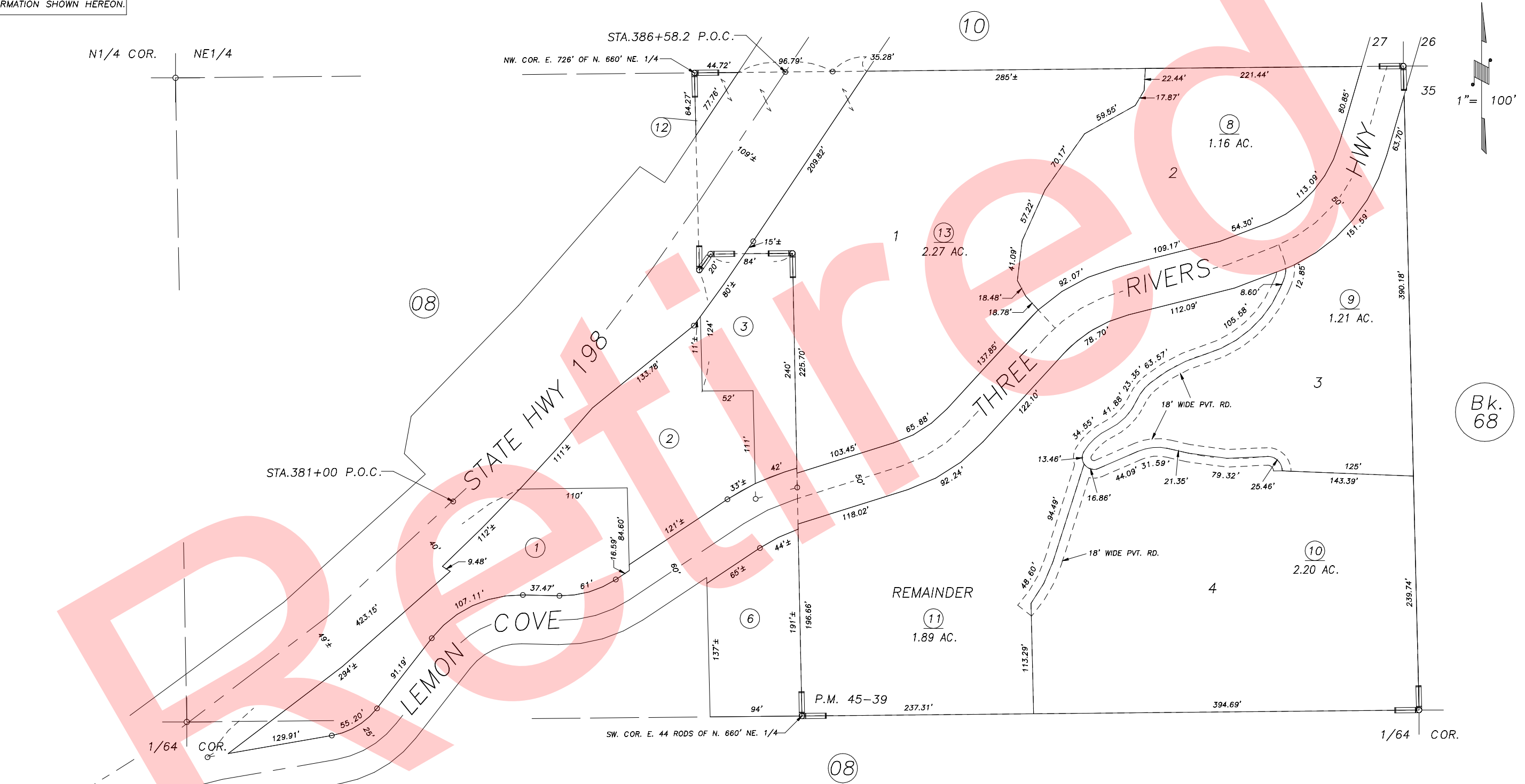


**DISCLAIMER**  
 THIS MAP WAS PREPARED FOR LOCAL PROPERTY ASSESSMENT PURPOSES ONLY AND THE PARCELS SHOWN HEREON MAY NOT COMPLY WITH STATE AND LOCAL SUBDIVISION ORDINANCES, AND NO LIABILITY IS ASSUMED FOR THE USE OF THE INFORMATION SHOWN HEREON.

POR. OF N1/2 OF NE 1/4 OF NE1/4 SEC. 34, T.17S., R.28E., M.D.B.& M. Tax Area Code 066-09  
 146-009



PARCEL MAP NO. 4434, 45-39  
 POR. RECORD OF SURVEY, L.S. 27-22 (STATE HWY. 198)  
 POR. RECORD OF SURVEY, L.S. 27-86 (LAKE KAWEAH)

VICINITY OF THREE RIVERS  
 ASSESSOR'S MAPS BK.066 , PG.09  
 COUNTY OF TULARE, CALIFORNIA, U.S.A.

NOTE: Assessor's Parcel Numbers Shown in Circles ① 123  
 Assessor's Block Numbers Shown in Elipses (08) (10) (12)

2004-0109539	10/13/2008	ASG
REVISION	DATE	TECH