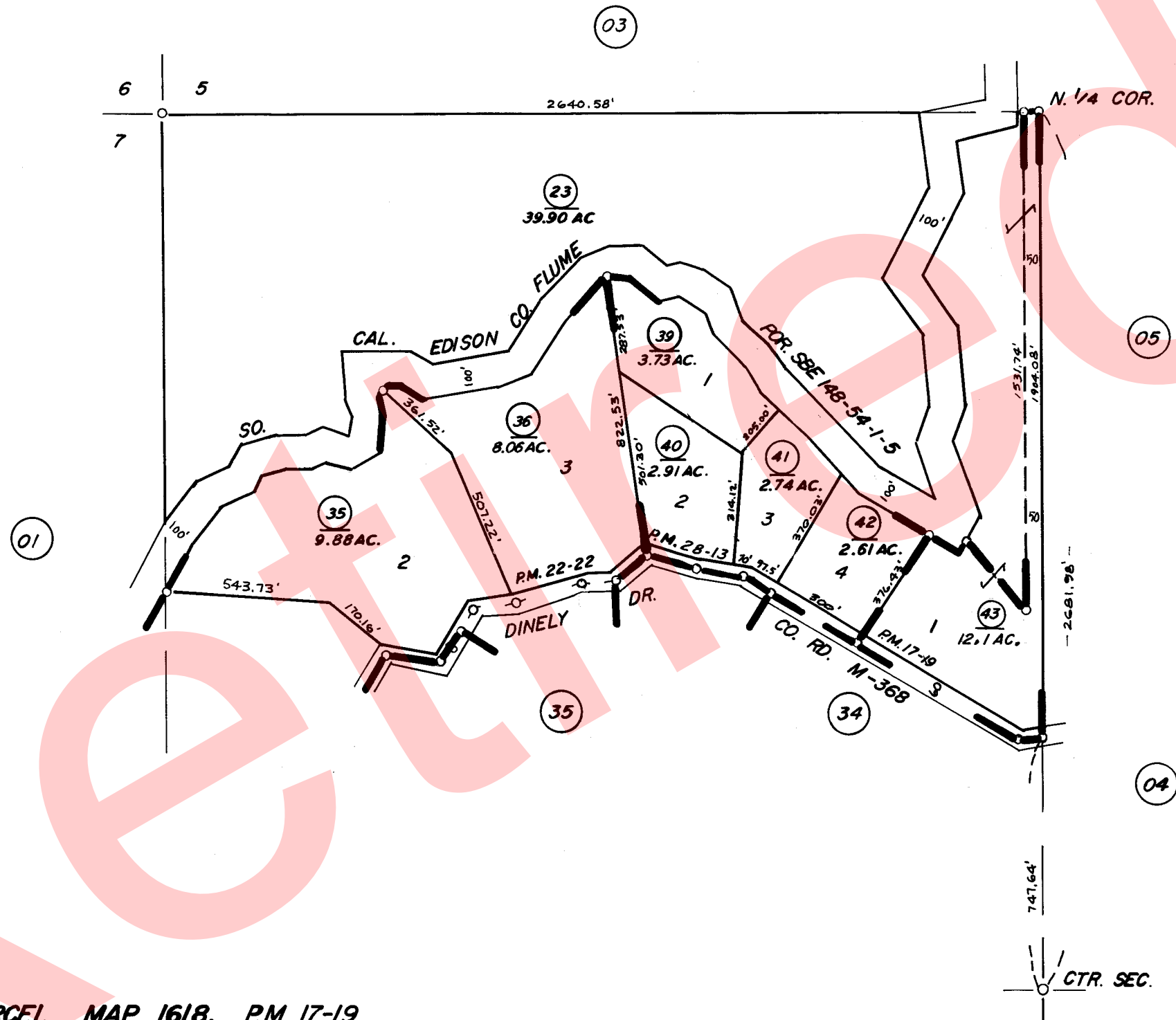


POR. NW 1/4, SEC. 8, T.17 S., R.29 E., M.D.B. & M.

TAX CODE AREA 69-02
146-002
146-009



POR. PARCEL MAP 1618, P.M. 17-19
 POR. PARCEL MAP 2121, P.M. 22-22
 POR. PARCEL MAP 2712, P.M. 28-13

ASSESSOR'S MAPS BK. 69 PG. 02
 COUNTY OF TULARE, CALIF.

NOTE—ASSESSOR'S BLOCK NUMBERS SHOWN IN ELLIPSES
 ASSESSOR'S PARCEL NUMBERS SHOWN IN CIRCLES