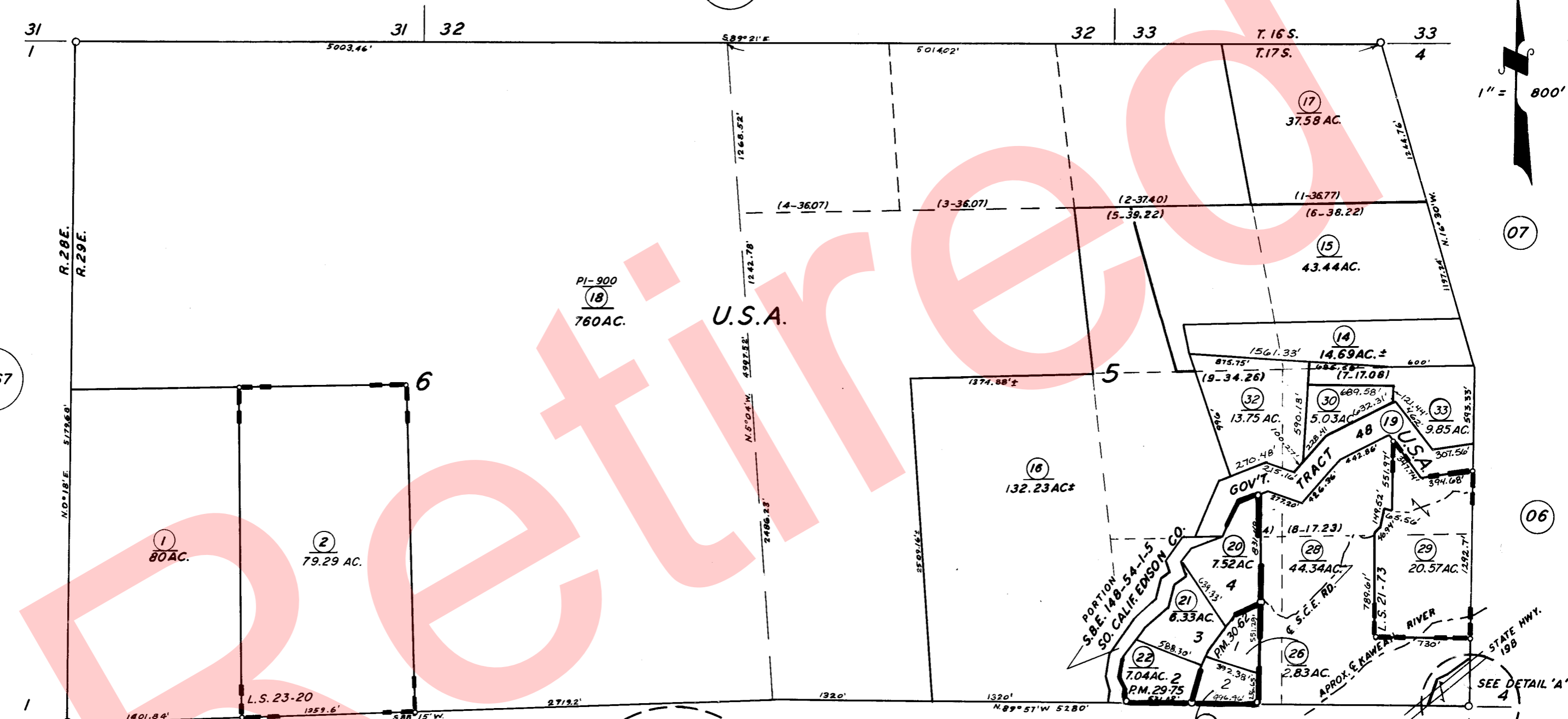


69
70
72

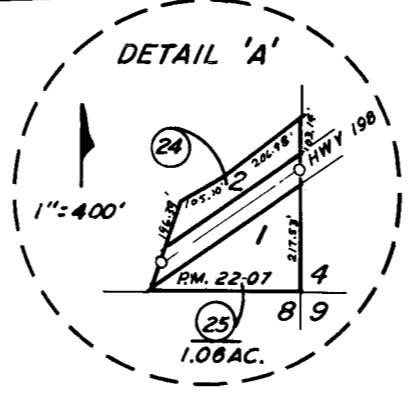
SEC. 5, & SEC. 6, T. 17S., R. 29E., M. D. B. & M.

TAX CODE AREA **69-03**
146-002
146-009

BK. 37



BK. 67



PARCEL MAP 2106 P.M. 22-07
PARCEL MAP 2874 P.M. 29-75
PARCEL MAP 2961 P.M. 30-62
RECORD OF SURVEY L.S. 23-20
RECORD OF SURVEY L.S. 21-73

ASSESSOR'S MAPS BK. 69, PG. 03.
COUNTY OF TULARE, CALIF.

NOTE - ASSESSOR'S BLOCK NUMBERS SHOWN IN ELLIPSES
ASSESSOR'S PARCEL NUMBERS SHOWN IN CIRCLES