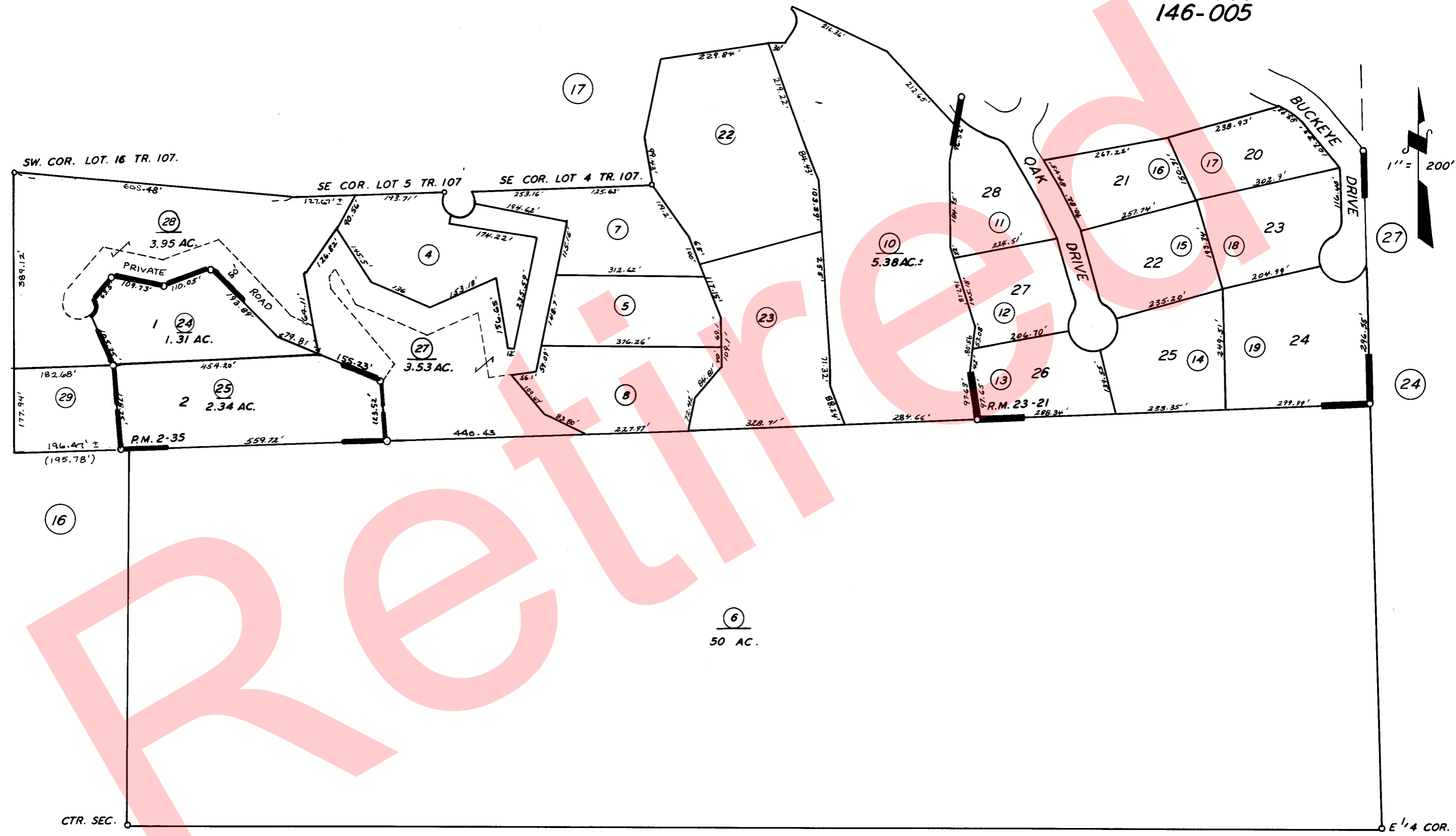


70
71
72

SLY. POR. OF NE 1/4 SEC. 18, T.17S., R.29E., M. D. B. & M.

TAX CODE AREA **69-15**
146-009
146-005



POR. TR. NO. 350, R.M. 23-21.
PARCEL MAP 135, P.M. 2-35

14

ASSESSOR'S MAPS BK. 69, PG. 15.
COUNTY OF TULARE, CALIF.

NOTE - ASSESSOR'S BLOCK NUMBERS SHOWN IN ELLIPSES
ASSESSOR'S PARCEL NUMBERS SHOWN IN CIRCLES

