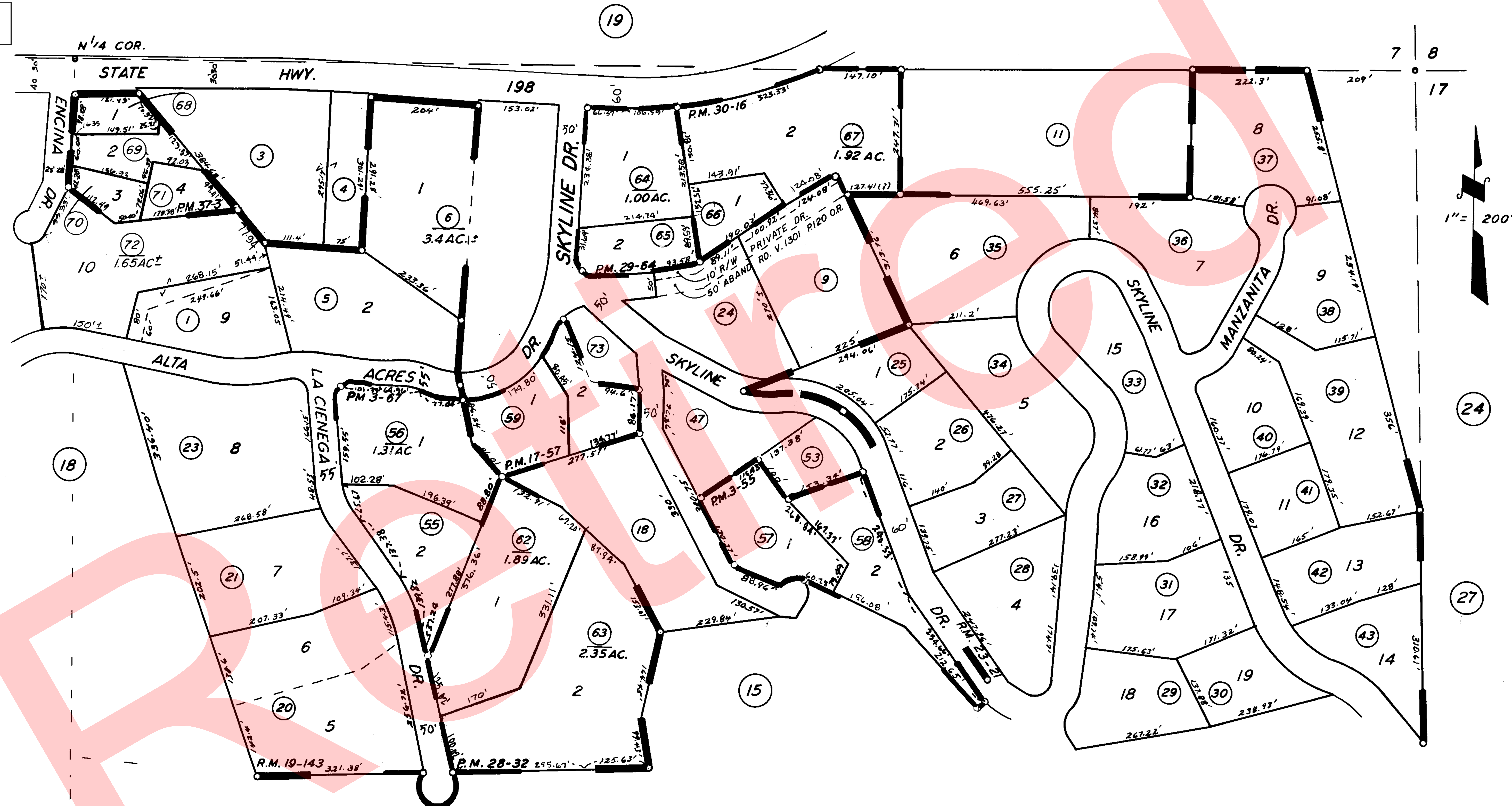


DISCLAIMER
 THIS MAP WAS PREPARED FOR LOCAL PROPERTY ASSESSMENT PURPOSES ONLY. THE PARCELS SHOWN HEREON MAY NOT COMPLY WITH STATE AND LOCAL SUBDIVISION ORDINANCES. NO LIABILITY IS ASSUMED FOR THE USE OF THE INFORMATION HEREON.

REVISED: 08/06/2009
 REASON: ADD CUL-DE-SAC
 CAD TECH: KMS

NLY. POR. OF NE 1/4 SEC. 18, T.17S., R.29E., M.D.B. & M.

TAX CODE AREA **069-17**
 146-009
 146-005



POR. TRACT NO. 107, R.M. 19-143
 POR. TRACT NO. 350, R.M. 23-21
 PARCEL MAP 255, P.M. 3-55
 PARCEL MAP 267, P.M. 3-67
 PARCEL MAP 1656, P.M. 17-57
 PARCEL MAP 2731, P.M. 28-32
 PARCEL MAP 2863, P.M. 29-64
 PARCEL MAP 2915, P.M. 30-16
 PARCEL MAP 3600, P.M. 37-3

ASSESSOR'S MAPS BK. 069, PG. 17.
 COUNTY OF TULARE, CALIF.

NOTE - ASSESSOR'S BLOCK NUMBERS SHOWN IN ELLIPSES
 ASSESSOR'S PARCEL NUMBERS SHOWN IN CIRCLES

