

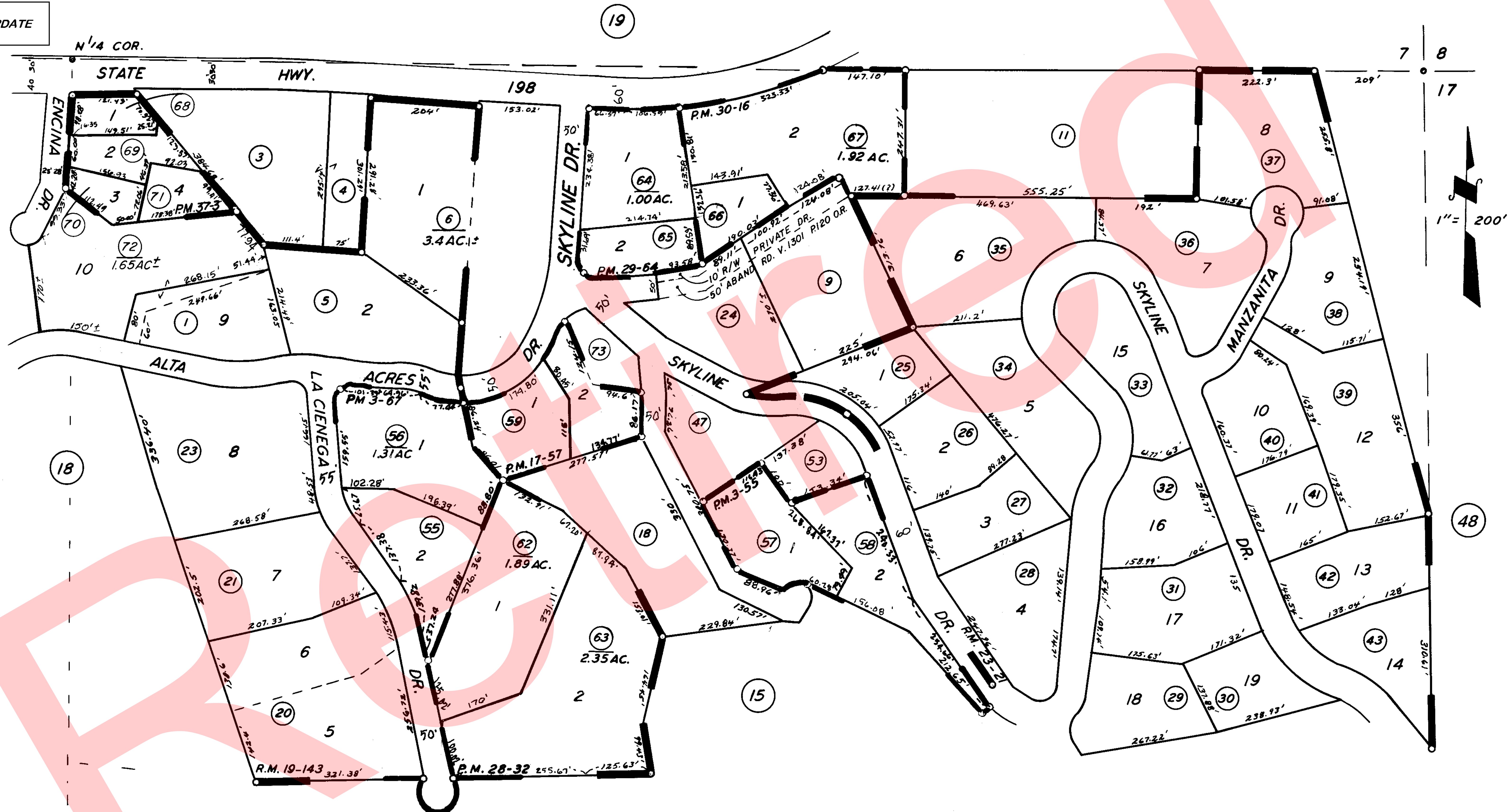
**DISCLAIMER**

THIS MAP WAS PREPARED FOR LOCAL PROPERTY ASSESSMENT PURPOSES ONLY. THE PARCELS SHOWN HEREON MAY NOT COMPLY WITH STATE AND LOCAL SUBDIVISION ORDINANCES. NO LIABILITY IS ASSUMED FOR THE USE OF THE INFORMATION HEREON.

REVISED: 02/27/2013  
REASON: ADJ. PG. UPDATE  
CAD TECH: LLB

NLY. POR. OF NE 1/4 SEC. 18, T.17S., R.29E., M.D.B.&M.

TAX CODE AREA **069-17**  
**146-009**  
**146-005**



POR. TRACT NO. 107, R.M. 19-143  
 POR. TRACT NO. 350, R.M. 23-21  
 PARCEL MAP 255, P.M. 3-55  
 PARCEL MAP 267, P.M. 3-67  
 PARCEL MAP 1656, P.M. 17-57  
 PARCEL MAP 2731, P.M. 28-32  
 PARCEL MAP 2863, P.M. 29-64  
 PARCEL MAP 2915, P.M. 30-16  
 PARCEL MAP 3600, P.M. 37-3

VICINITY OF THREE RIVERS  
 ASSESSOR'S MAPS BK. 069, PG. 17.  
 COUNTY OF TULARE, CALIF.

NOTE — ASSESSOR'S BLOCK NUMBERS SHOWN IN ELLIPSES  
 ASSESSOR'S PARCEL NUMBERS SHOWN IN CIRCLES