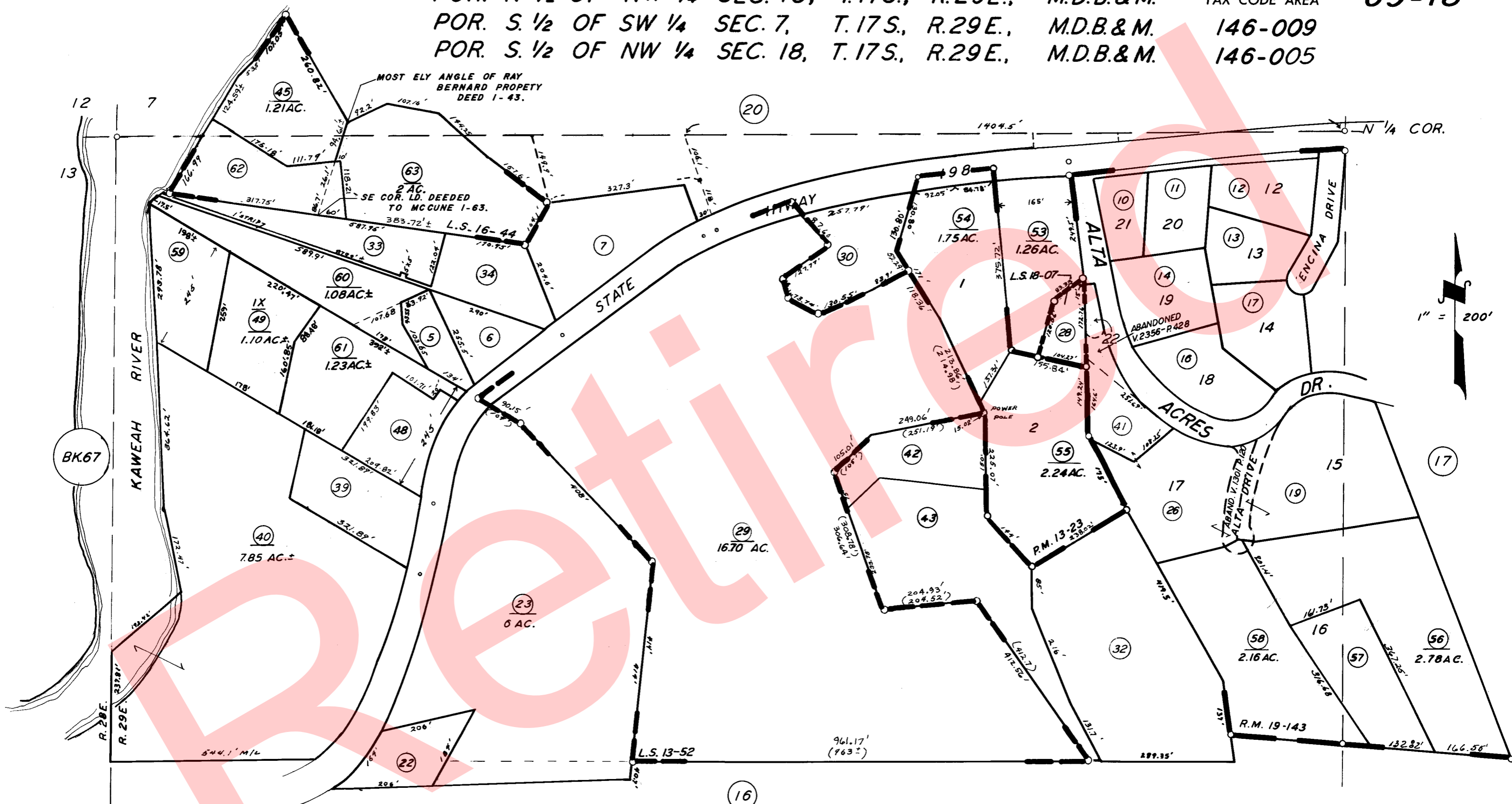


POR. N 1/2 OF NW 1/4 SEC. 18, T.17S., R.29E., M.D.B.&M.  
 POR. S 1/2 OF SW 1/4 SEC. 7, T.17S., R.29E., M.D.B.&M.  
 POR. S 1/2 OF NW 1/4 SEC. 18, T.17S., R.29E., M.D.B.&M.

TAX CODE AREA **69-18**  
**146-009**  
**146-005**



POR. TRACT 107, R.M. 19-143  
 RECORD OF SURVEY, L.S. 13-52  
 PARCEL MAP 1222, P.M. 13-23  
 RECORD OF SURVEY, L.S. 16-44  
 RECORD OF SURVEY, L.S. 18-07

ASSESSOR'S MAPS BK. 69, PG. 18.  
 COUNTY OF TULARE, CALIF.

NOTE — ASSESSOR'S BLOCK NUMBERS SHOWN IN ELLIPSES  
 ASSESSOR'S PARCEL NUMBERS SHOWN IN CIRCLES