

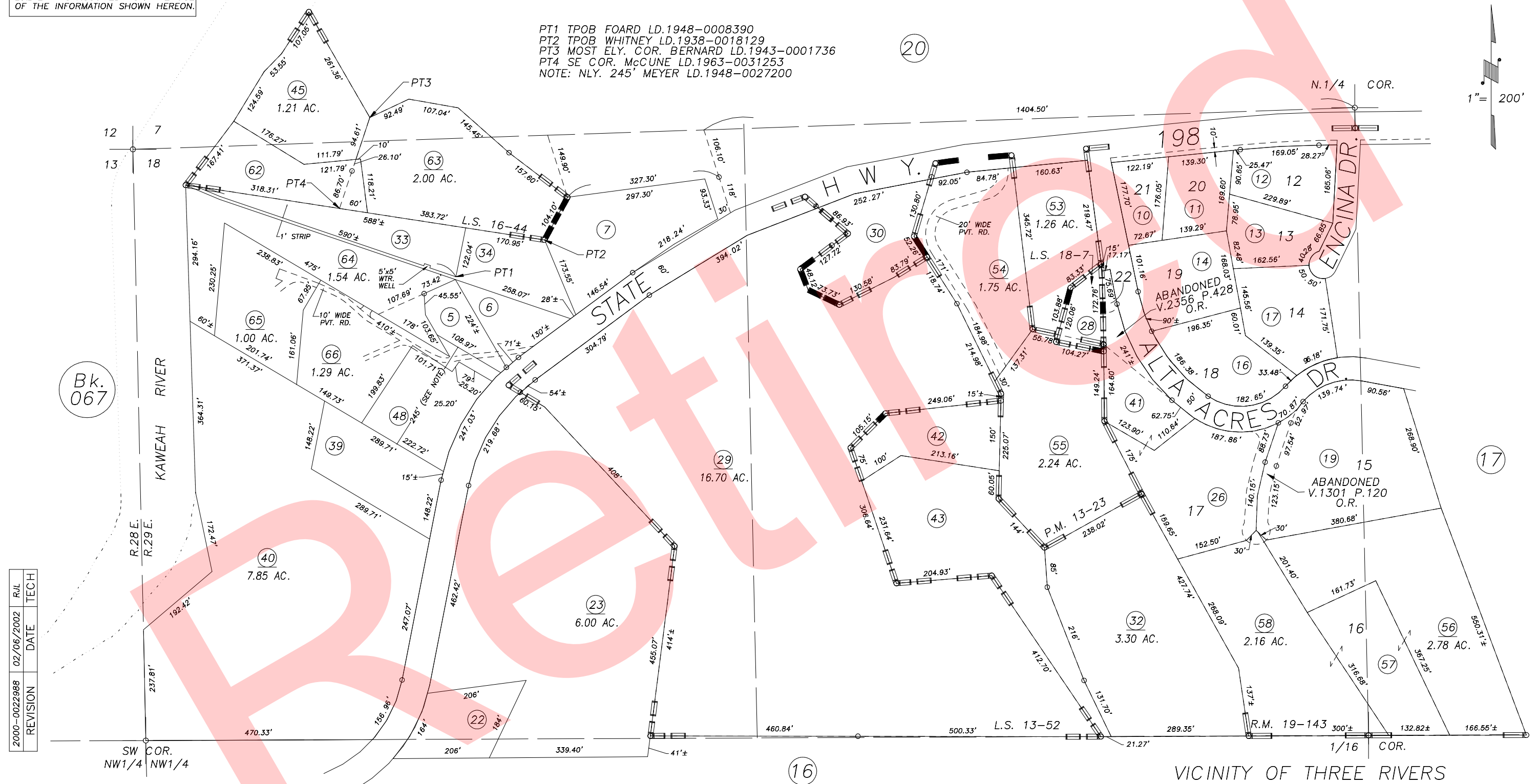
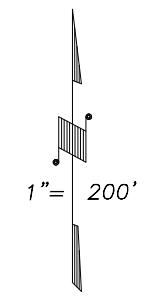
DISCLAIMER
 THIS MAP WAS PREPARED FOR LOCAL PROPERTY ASSESSMENT PURPOSES ONLY AND THE PARCELS SHOWN HEREON MAY NOT COMPLY WITH STATE AND LOCAL SUBDIVISION ORDINANCES, AND NO LIABILITY IS ASSUMED FOR THE USE OF THE INFORMATION SHOWN HEREON.

POR. N1/2, NW1/4 SEC. 18, T.17S., R.29E., M.D.B.& M.

Tax Area Code 069-18

146-009
 146-005

PT1 TPOB FOARD LD.1948-0008390
 PT2 TPOB WHITNEY LD.1938-0018129
 PT3 MOST ELY. COR. BERNARD LD.1943-0001736
 PT4 SE COR. McCUNE LD.1963-0031253
 NOTE: NLY. 245' MEYER LD.1948-0027200



REVISION	DATE	TECH
2000-0022988	02/06/2002	RJL

Bk. 067

POR. TRACT 107, R.M. 19-143
 RECORD OF SURVEY, L.S.13-52
 PARCEL MAP 1222, P.M. 13-23
 RECORD OF SURVEY, L.S. 16-44
 RECORD OF SURVEY, L.S. 18-7

VICINITY OF THREE RIVERS
 ASSESSOR'S MAPS BK. 069 , PG. 18 .
 COUNTY OF TULARE, CALIF.

NOTE: Assessor's Block Numbers Shown in Ellipses
 Assessor's Parcel Numbers Shown in Circles

01/02