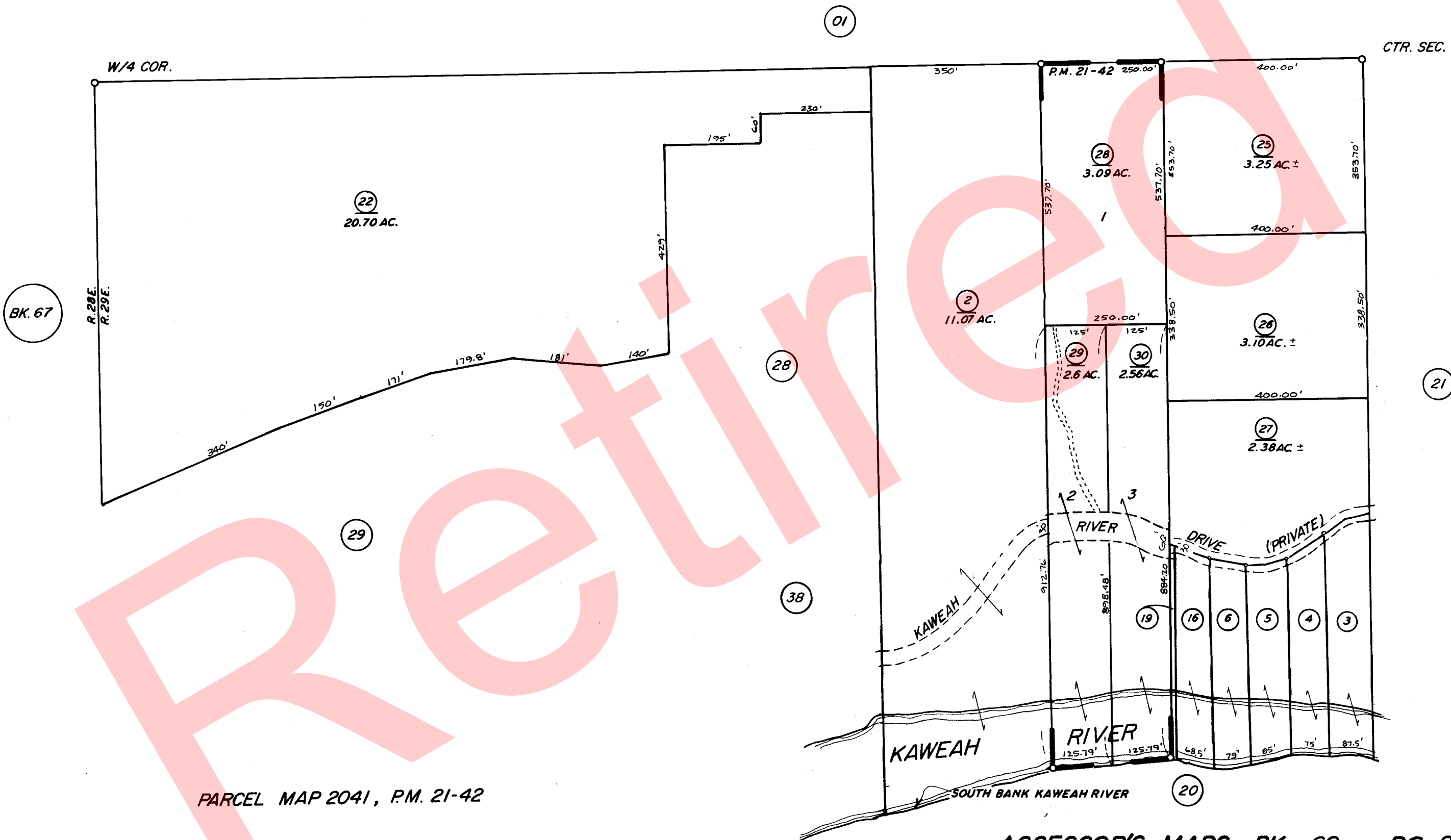


CTR. SEC.



BK. 67

PARCEL MAP 2041, P.M. 21-42

ASSESSOR'S MAPS BK. 69, PG. 22
COUNTY OF TULARE, CALIF.

NOTE - ASSESSOR'S BLOCK NUMBERS SHOWN IN ELLIPSES
ASSESSOR'S PARCEL NUMBERS SHOWN IN CIRCLES