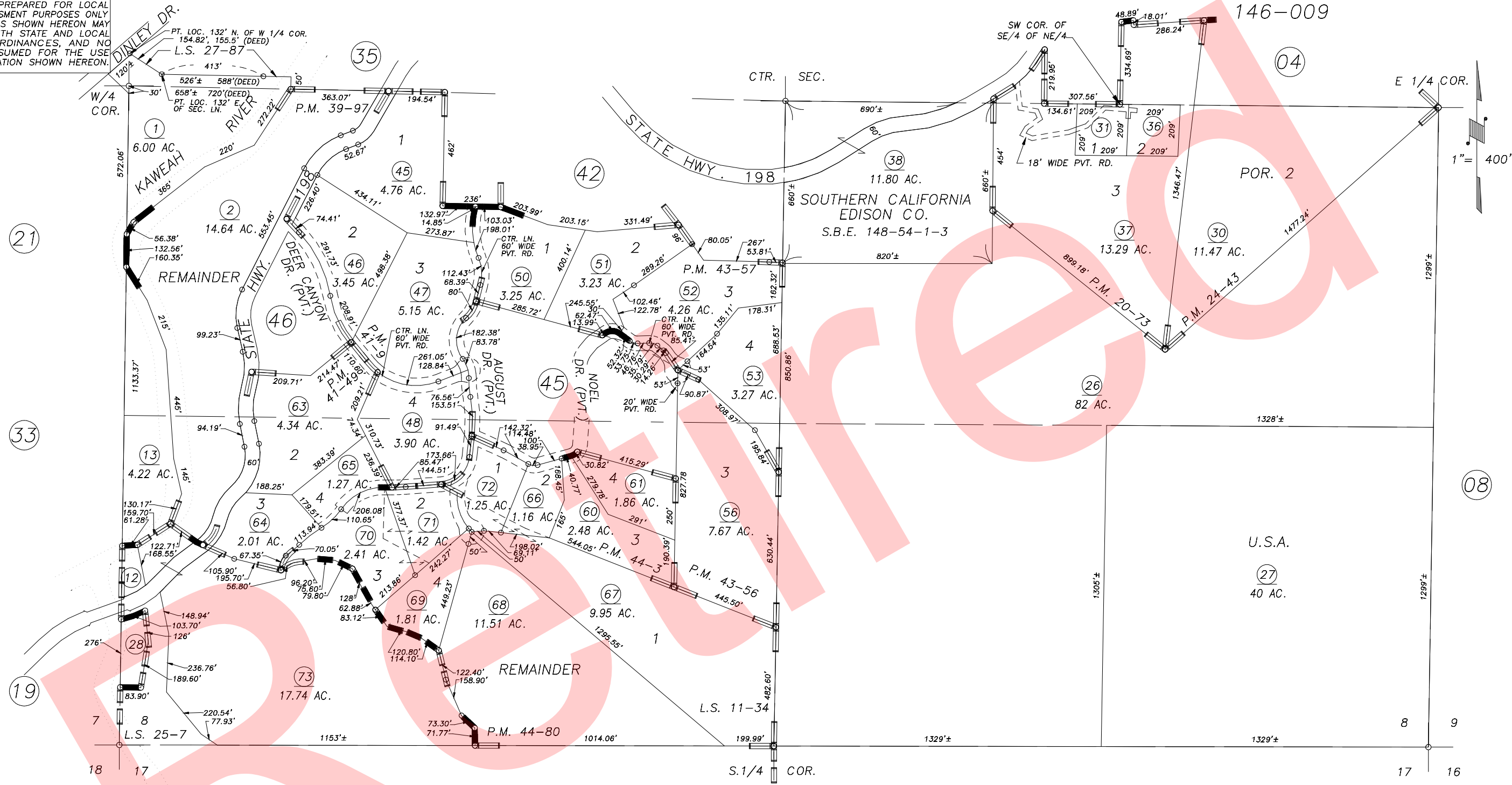


DISCLAIMER
 THIS MAP WAS PREPARED FOR LOCAL PROPERTY ASSESSMENT PURPOSES ONLY AND THE PARCELS SHOWN HEREON MAY NOT COMPLY WITH STATE AND LOCAL SUBDIVISION ORDINANCES, AND NO LIABILITY IS ASSUMED FOR THE USE OF THE INFORMATION SHOWN HEREON.

POR. N1/2 & S1/2 SEC. 8, T.17S., R.29E., M.D.B.& M.

Tax Area Code 069-23

146-009



PARCEL MAP 1972, P.M. 20-73
 POR. PARCEL MAP 4299, P.M. 44-3
 POR. PARCEL MAP 2342, P.M. 24-43
 RECORD OF SURVEY, L.S. 11-34
 PARCEL MAP 4375, P.M. 44-80
 POR. PARCEL MAP 4005, P.M. 41-9
 PARCEL MAP 4252, P.M. 43-56

PARCEL MAP 4253, P.M. 43-57
 PARCEL MAP 3893, P.M. 39-97
 POR. RECORD OF SURVEY, L.S. 25-7
 RECORD OF SURVEY, L.S. 27-87

VICINITY OF THREE RIVERS
 ASSESSOR'S MAPS BK.069 , PG.23
 COUNTY OF TULARE, CALIFORNIA, U.S.A.

NOTE: Assessor's Parcel Numbers Shown in Circles (1) (123)
 Assessor's Block Numbers Shown in Ellipses

2008-0048331	09/15/2008	ASG
REVISION	DATE	TECH

Retired