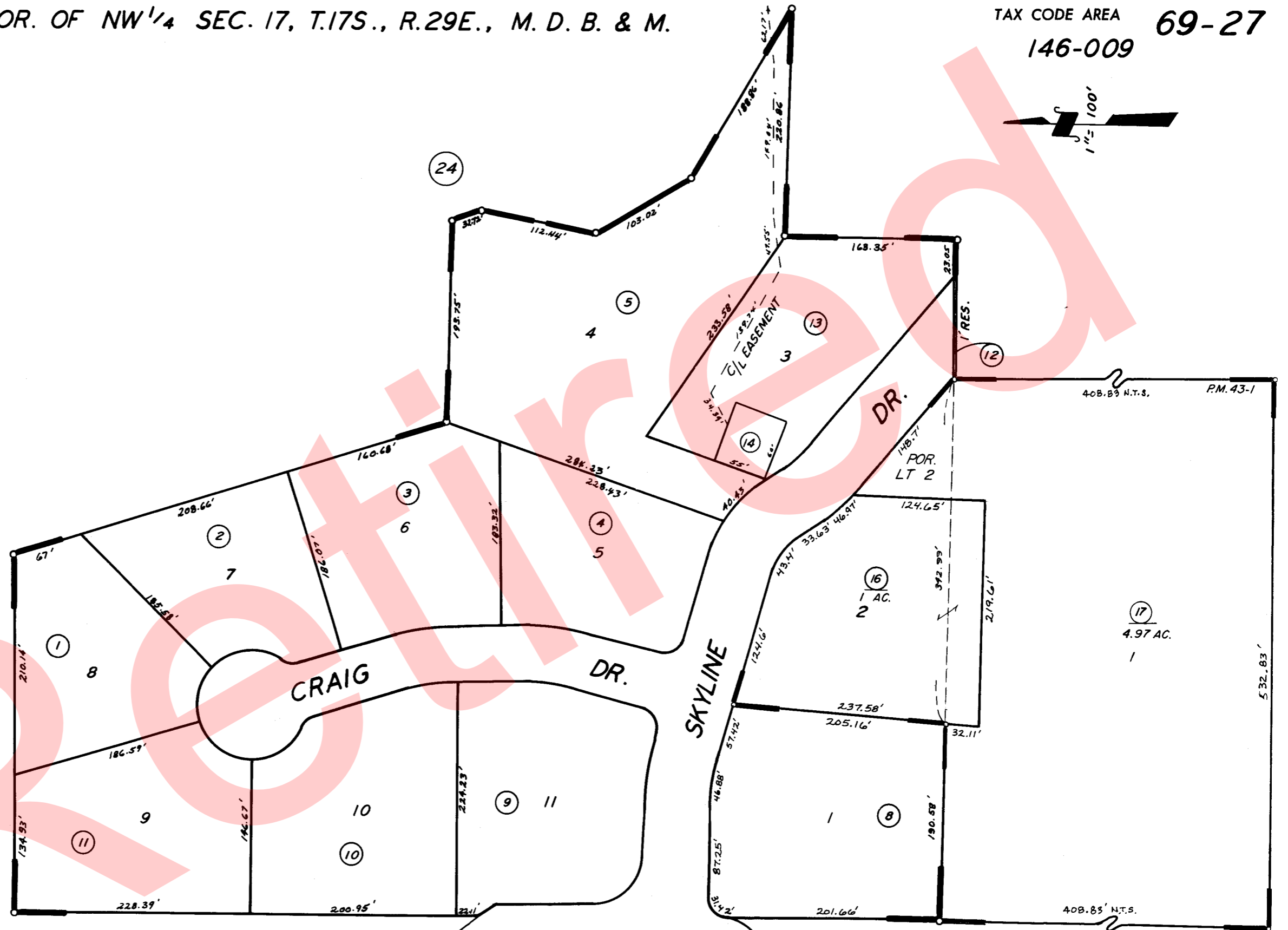
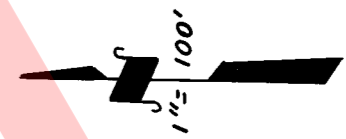


POR. OF NW 1/4 SEC. 17, T.17S., R.29E., M. D. B. & M.

TAX CODE AREA 69-27
146-009



TR. NO. 374 R. M. 23-59.
PARCEL MAP 4197 P.M. 43-1

ASSESSOR'S MAPS BK. 69, PG. 27.

COUNTY OF TULARE, CALIF.

NOTE — ASSESSOR'S BLOCK NUMBERS SHOWN IN ELLIPSES
ASSESSOR'S PARCEL NUMBERS SHOWN IN CIRCLES

