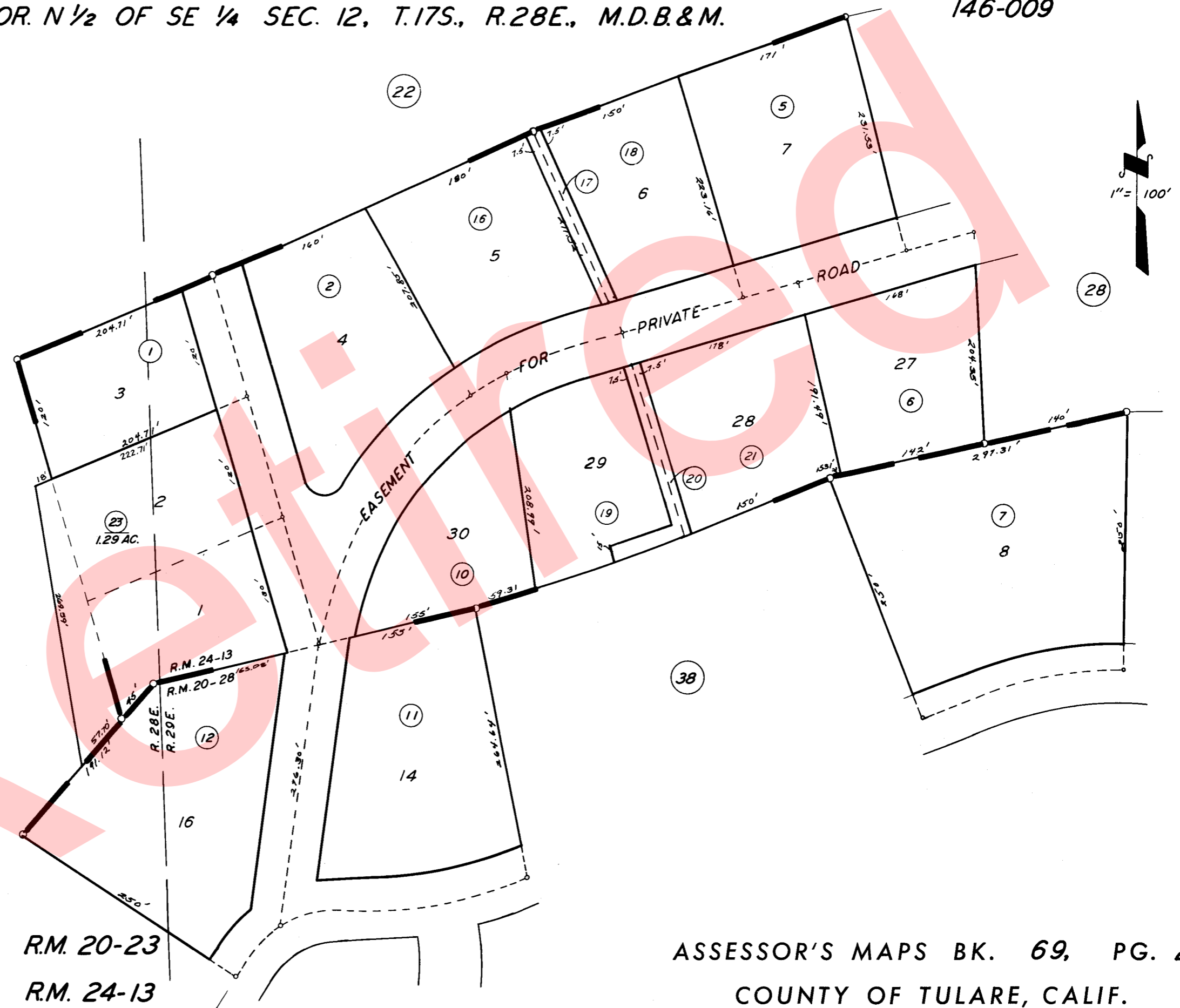


POR. N 1/2 OF SW 1/4 SEC. 7, T.17S., R.29E., M.D.B.&M. &
POR. N 1/2 OF SE 1/4 SEC. 12, T.17S., R.28E., M.D.B.&M.

TAX CODE AREA **69-29**
146-009



BK.67

POR. TR. NO. 129 R.M. 20-23
POR. TR. NO. 403 R.M. 24-13

ASSESSOR'S MAPS BK. 69, PG. 29.
COUNTY OF TULARE, CALIF.

NOTE — ASSESSOR'S BLOCK NUMBERS SHOWN IN ELLIPSES
ASSESSOR'S PARCEL NUMBERS SHOWN IN CIRCLES

