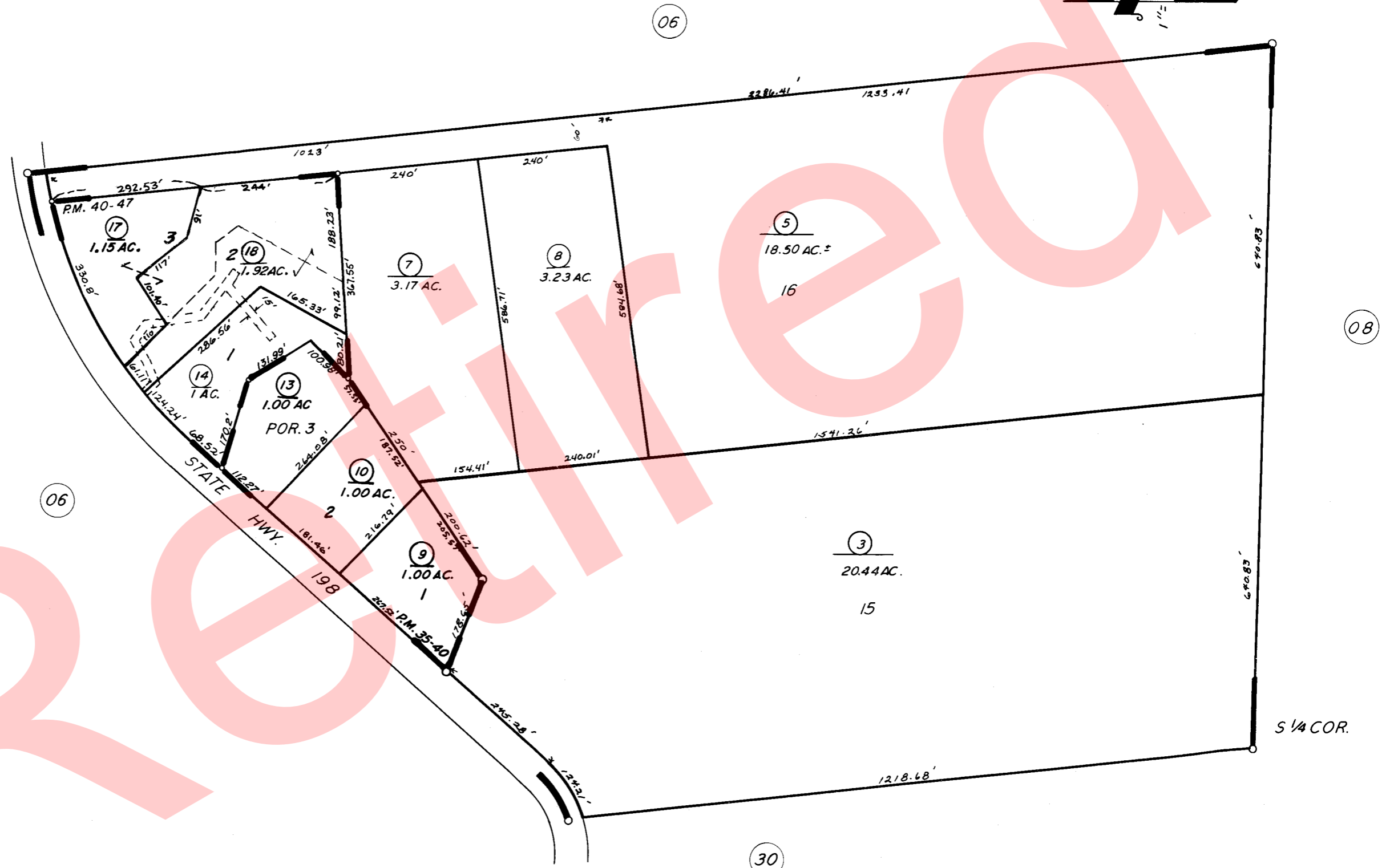


POR. S 1/2 SEC. 4, T.17S., R.29E., M.D.B. & M.

TAX CODE AREA 69-31  
146-009



POR. TRACT NO. 439 R.M. 24-57  
PARCEL MAP 3438 P.M. 35-40  
PARCEL MAP 3943 P.M. 40-47

ASSESSOR'S MAPS BK. 69, PG. 31.  
COUNTY OF TULARE, CALIF.

NOTE — ASSESSOR'S BLOCK NUMBERS SHOWN IN ELLIPSES  
ASSESSOR'S PARCEL NUMBERS SHOWN IN CIRCLES

