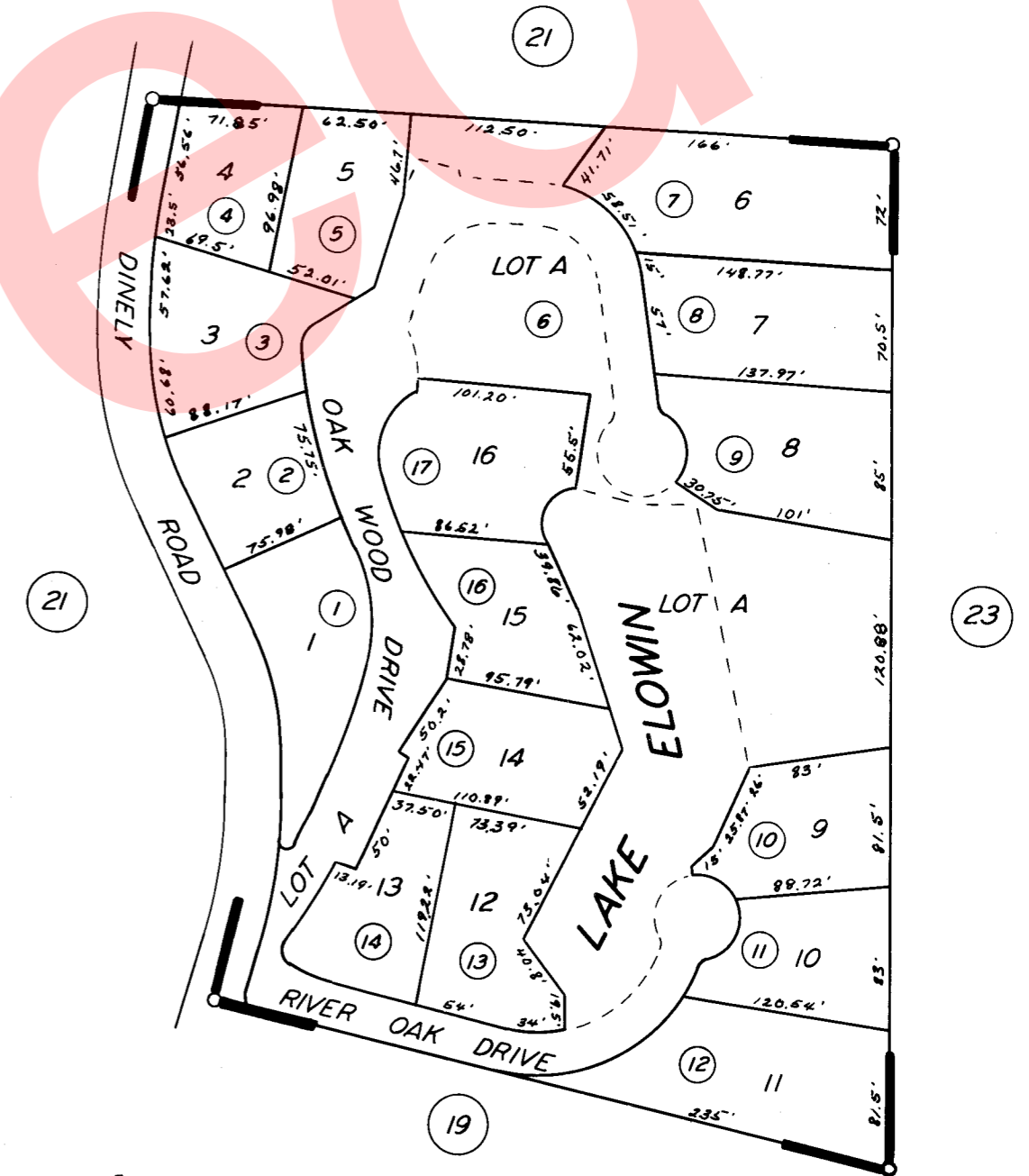


Retire



TRACT NO. 428 R.M. 24-67

ASSESSOR'S MAPS BK. 69, PG. 33.
COUNTY OF TULARE, CALIF.

NOTE — ASSESSOR'S BLOCK NUMBERS SHOWN IN ELLIPSES
ASSESSOR'S PARCEL NUMBERS SHOWN IN CIRCLES

