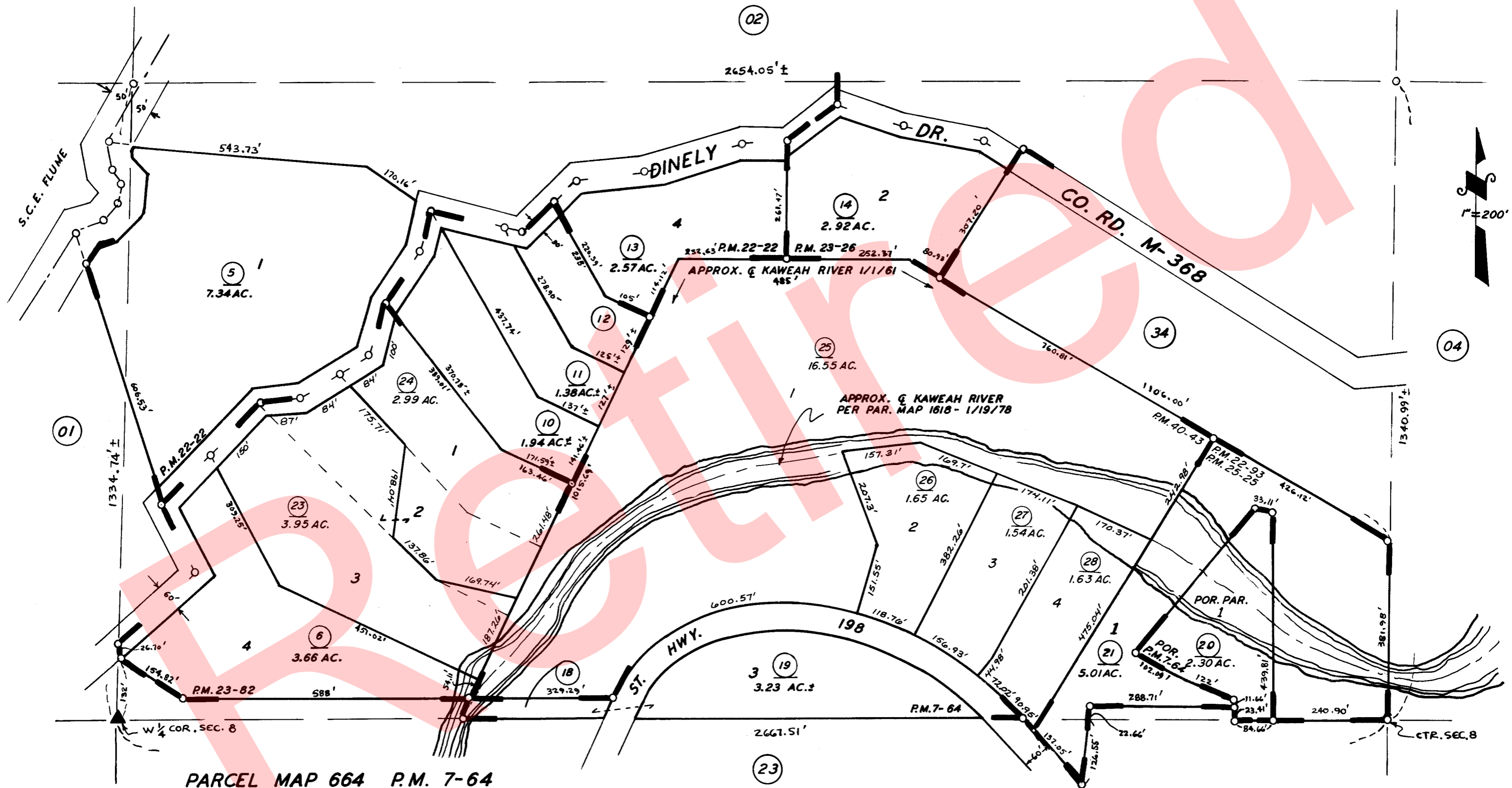


POR. OF S 1/2 OF NW 1/4 & POR. OF SW 1/4 OF SEC. 8, T.17S., R.29E., M.D.B. & M.
 ALSO A POR. OF NE 1/4 OF SEC. 7, T.17S., R.29E., M.D.B. & M.

TAX CODE AREA
 146-009



PARCEL MAP 664	P.M. 7-64
POR. PARCEL MAP 1618	P.M. 17-19
POR. PARCEL MAP 2121	P.M. 22-22
PARCEL MAP 2192	P.M. 22-93
POR. PARCEL MAP 2225	P.M. 23-26
PARCEL MAP 2281	P.M. 23-82
PARCEL MAP 2424	P.M. 25-25
PARCEL MAP 3939	P.M. 40-43

ASSESSOR'S MAP BK. 69 PG. 35
 COUNTY OF TULARE, CA.