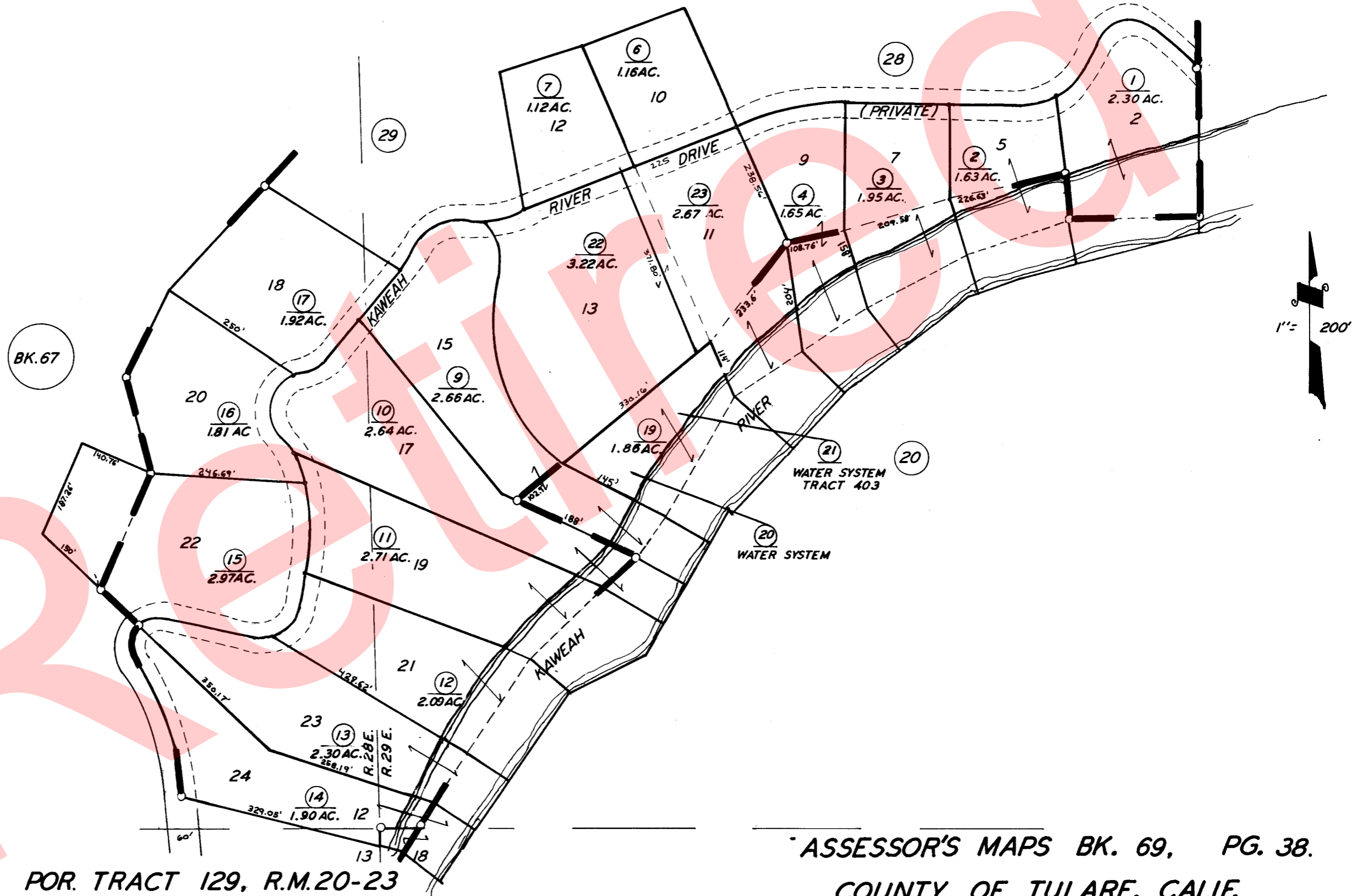


POR. S 1/2 OF SW 1/4 SEC. 7, T.17S., R.29E., M. D. B.& M.  
POR. SE 1/2 OF SEC. 12 T.17S., R.28E., M. D. B.& M.

TAX CODE AREA 69-38  
146-009



POR. TRACT 129, R.M.20-23

ASSESSOR'S MAPS BK. 69, PG. 38.  
COUNTY OF TULARE, CALIF.

NOTE—ASSESSOR'S BLOCK NUMBERS SHOWN IN ELLIPSES  
ASSESSOR'S PARCEL NUMBERS SHOWN IN CIRCLES