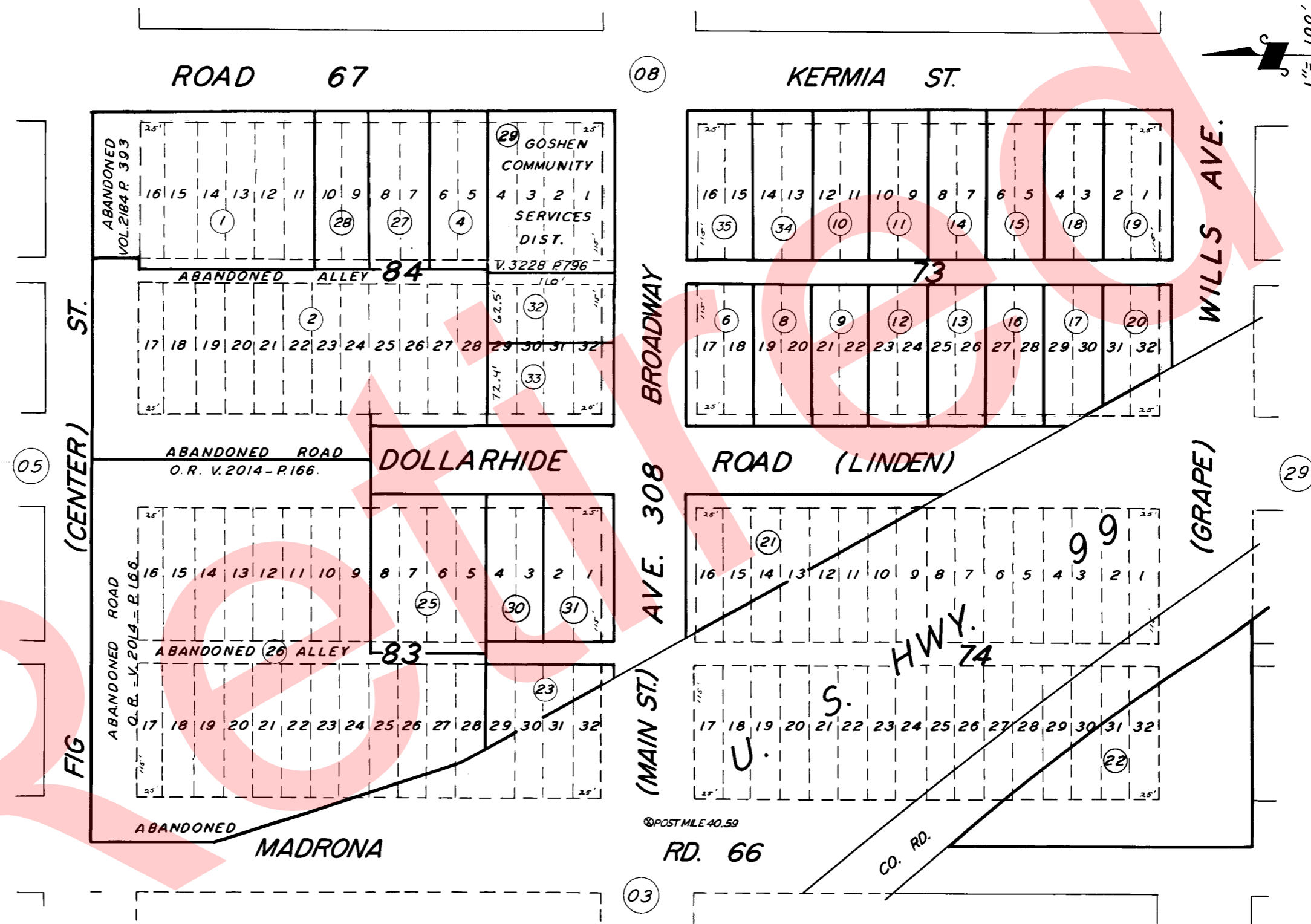
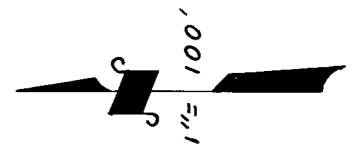


153-060

153-049



POR. GOSHEN TOWNSITE, R.M. 3-19.

ASSESSOR'S MAPS BK. 75, PG. 04.

NOTE: ABANDONMENT REDUCING MOST 80' STREETS TO 60' & 100' STREETS TO 80' RECORDED IN VOL 2184, PAGE 390 OR.

COUNTY OF TULARE, CALIF.

NOTE - ASSESSOR'S BLOCK NUMBERS SHOWN IN ELLIPSES  
ASSESSOR'S PARCEL NUMBERS SHOWN IN CIRCLES

