

GOSHEN TOWNSITE, ORIGINAL BLKS. 89, 100 & POR. 90.

TAX CODE AREA

75-05

153-059

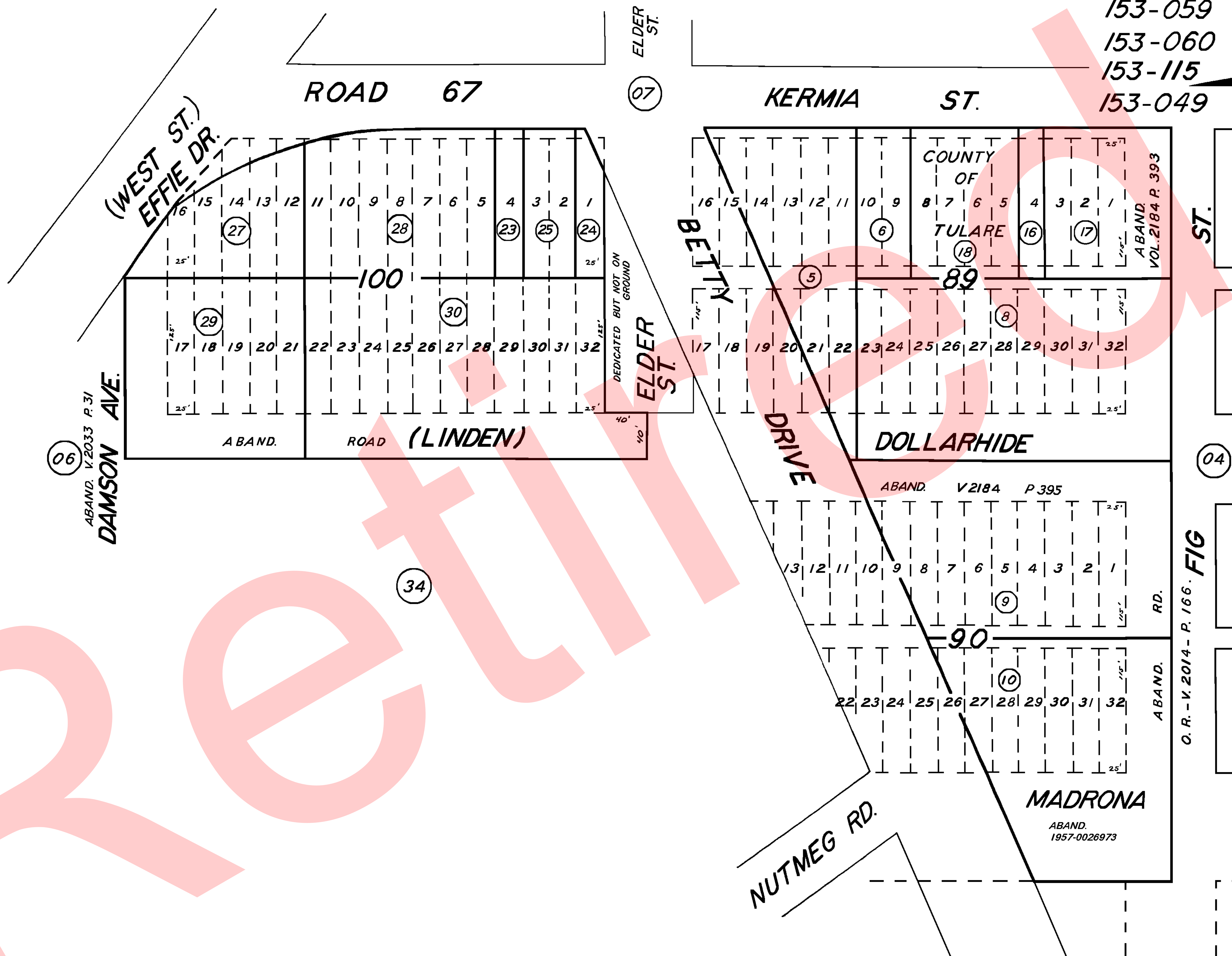
153-060

153-115

153-049

1" = 100'

DISCLAIMER
 THIS MAP WAS PREPARED FOR LOCAL PROPERTY ASSESSMENT PURPOSES ONLY. THE PARCELS SHOWN HEREON MAY NOT COMPLY WITH STATE AND LOCAL SUBDIVISION ORDINANCES. NO LIABILITY IS ASSUMED FOR THE USE OF THE INFORMATION HEREON.
 REVISED: 07/27/2009
 REASON: REVISED APN 010
 CAD TECH: CBT



POR. GOSHEN TOWNSITE, R.M. 3-19

POR. RECORD OF SURVEY, L.S. 27-25 (RIGGIN AVE. ETC.)

ASSESSOR'S MAPS BK. 75, PG. 05.

COUNTY OF TULARE, CALIF.

NOTE: ABANDONMENT REDUCING MOST 80' STREETS TO 60' & 100' STREETS TO 80' RECORDED IN VOL. 2184, PAGE 390 OR.

NOTE - ASSESSOR'S BLOCK NUMBERS SHOWN IN ELLIPSES
 ASSESSOR'S PARCEL NUMBERS SHOWN IN CIRCLES

