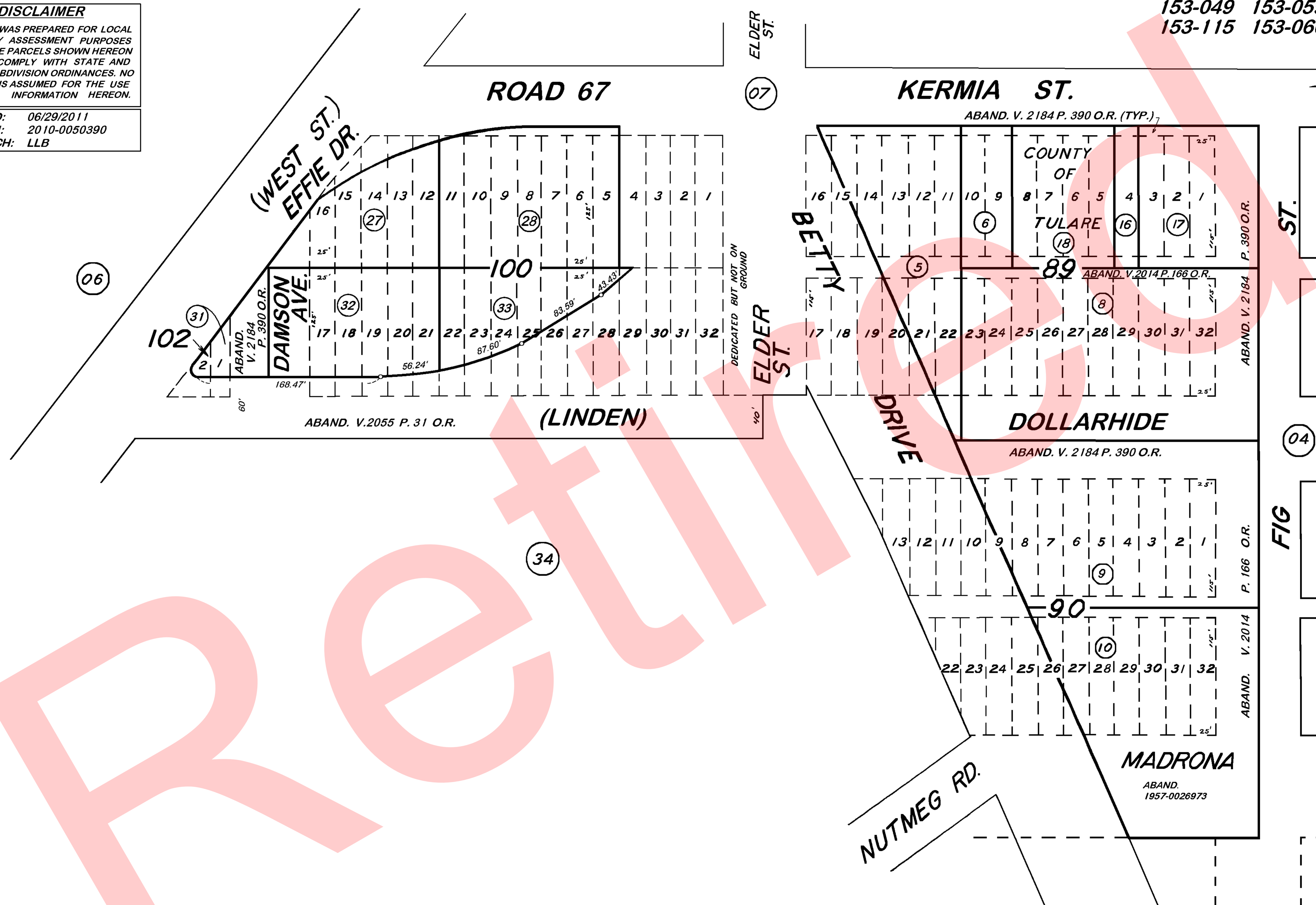
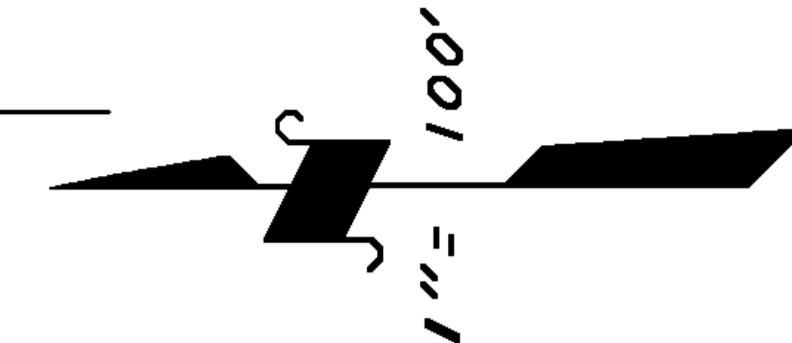


GOSHEN TOWNSITE, ORIGINAL BLKS. 89, 100 & POR. 90.

TAX CODE AREA
153-049 153-059
153-115 153-060

075-05

DISCLAIMER
THIS MAP WAS PREPARED FOR LOCAL PROPERTY ASSESSMENT PURPOSES ONLY. THE PARCELS SHOWN HEREON MAY NOT COMPLY WITH STATE AND LOCAL SUBDIVISION ORDINANCES. NO LIABILITY IS ASSUMED FOR THE USE OF THE INFORMATION HEREON.
REVISED: 06/29/2011
REASON: 2010-0050390
CAD TECH: LLB



POR. GOSHEN TOWNSITE, R.M. 3-19
POR. RECORD OF SURVEY, L.S. 27-25 (RIGGIN AVE., ETC.)

VICINITY OF GOSHEN
ASSESSOR'S MAPS BK. 075, PG. 05.
COUNTY OF TULARE, CALIF.

NOTE - ASSESSOR'S BLOCK NUMBERS SHOWN IN ELLIPSES
ASSESSOR'S PARCEL NUMBERS SHOWN IN CIRCLES

