

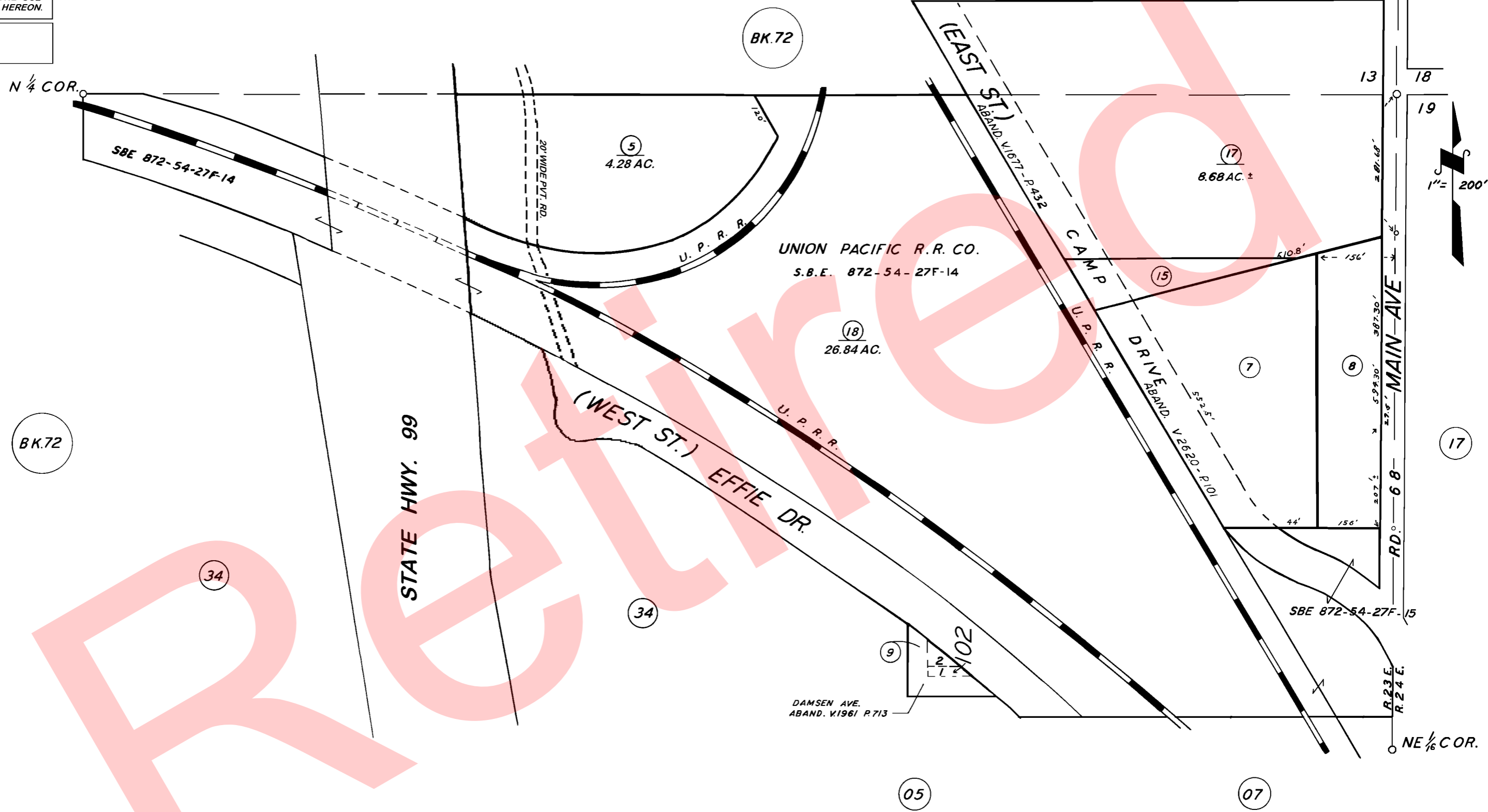
DISCLAIMER

THIS MAP WAS PREPARED FOR LOCAL PROPERTY ASSESSMENT PURPOSES ONLY. THE PARCELS SHOWN HEREON MAY NOT COMPLY WITH STATE AND LOCAL SUBDIVISION ORDINANCES. NO LIABILITY IS ASSUMED FOR THE USE OF THE INFORMATION HEREON.

REVISED: 04/16/2008
REASON: 2005-0029779
CAD TECH: ASG

POR. OF N 1/2 OF NE 1/4 SEC. 24, T. 18S., R. 23E., M. D. B. & M.

TAX CODE AREA **075-06**
153-115 153-117
153-116 153-063 153-049



POR. OF GOSHEN TOWNSITE R. M. 3-19.
POR. RECORD OF SURVEY, L.S. 27-25
(RIGGIN AVE. ETC.)

VICINITY OF GOSHEN
ASSESSOR'S MAPS BK. 075, PG. 06.
COUNTY OF TULARE, CALIF.

NOTE: ABANDONMENT REDUCING MOST 80' STREETS TO 60' & 100' STREETS TO 80' RECORDED IN VOL. 2184, PG. 390 OR.

NOTE - ASSESSOR'S BLOCK NUMBERS SHOWN IN ELLIPSES
ASSESSOR'S PARCEL NUMBERS SHOWN IN CIRCLES