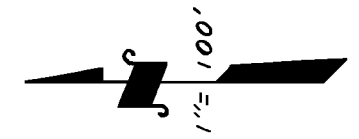


GOSHEN TOWNSITE, ORIGINAL BLKS. 87, 88 & 101.

TAX CODE AREA

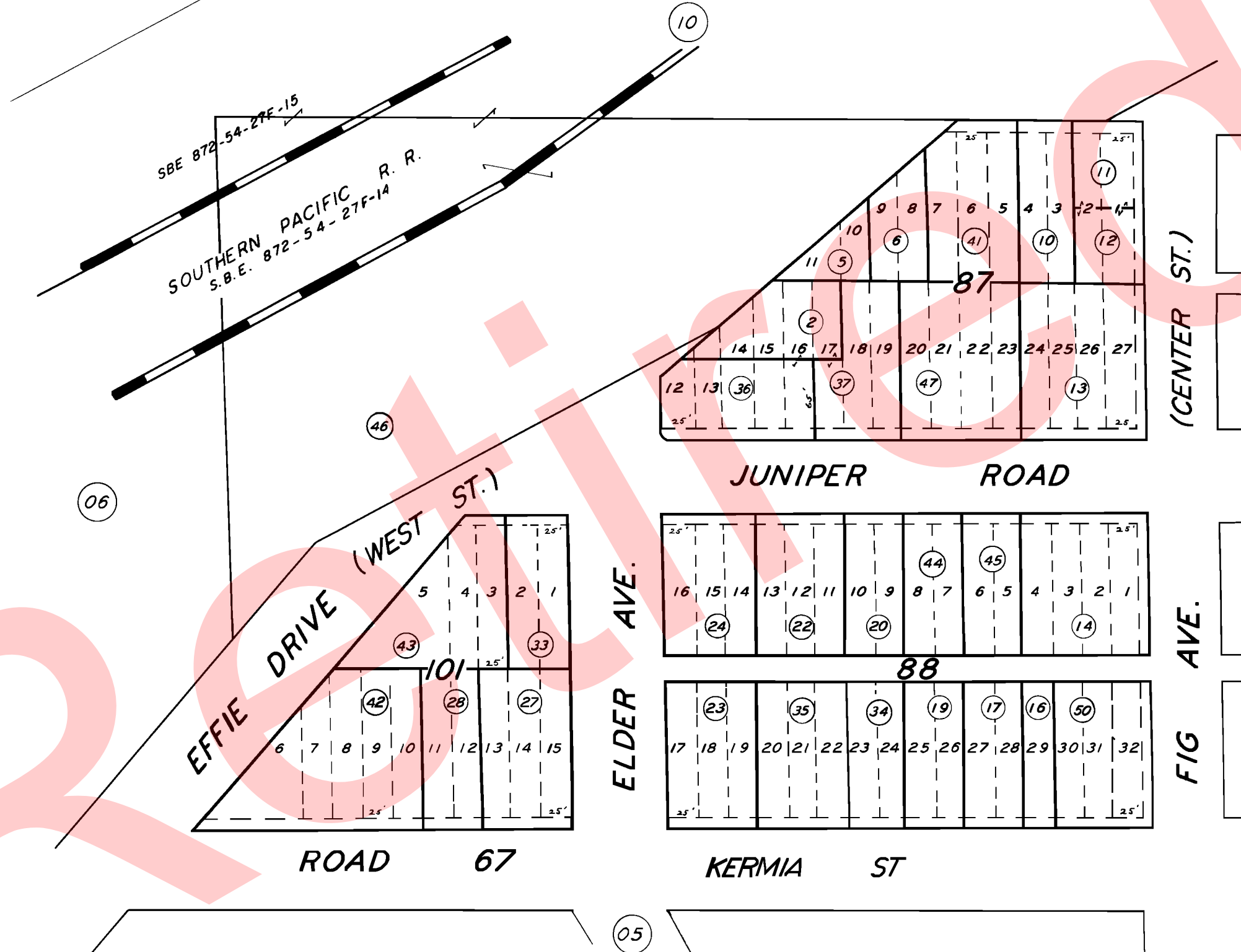
75-07

153-060
153-049



DISCLAIMER
THIS MAP WAS PREPARED FOR LOCAL PROPERTY ASSESSMENT PURPOSES ONLY. THE PARCELS SHOWN HEREON MAY NOT COMPLY WITH STATE AND LOCAL SUBDIVISION ORDINANCES. NO LIABILITY IS ASSUMED FOR THE USE OF THE INFORMATION HEREON.

REVISED: 11/17/2006
REASON: 2004-0114942
CAD TECH: CBT



NOTE: ABANDONMENT REDUCING MOST 80' STREETS TO 60' & 100' STREETS TO 80' RECORDED INVOL 2184, PG. 390 O.R.

POR. GOSHEN TOWNSITE, R.M. 3-19.
POR. RECORD OF SURVEY, L.S. 27-25
(RIGGIN AVE. ETC.)

ASSESSOR'S MAPS BK. 75, PG. 07.

COUNTY OF TULARE, CALIF.

NOTE - ASSESSOR'S BLOCK NUMBERS SHOWN IN ELLIPSES
ASSESSOR'S PARCEL NUMBERS SHOWN IN CIRCLES

