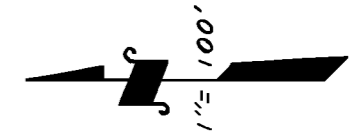


POR. SE1/4 OF NE1/4 SEC.24, T.18S., R.23E., M.D.B.&M.

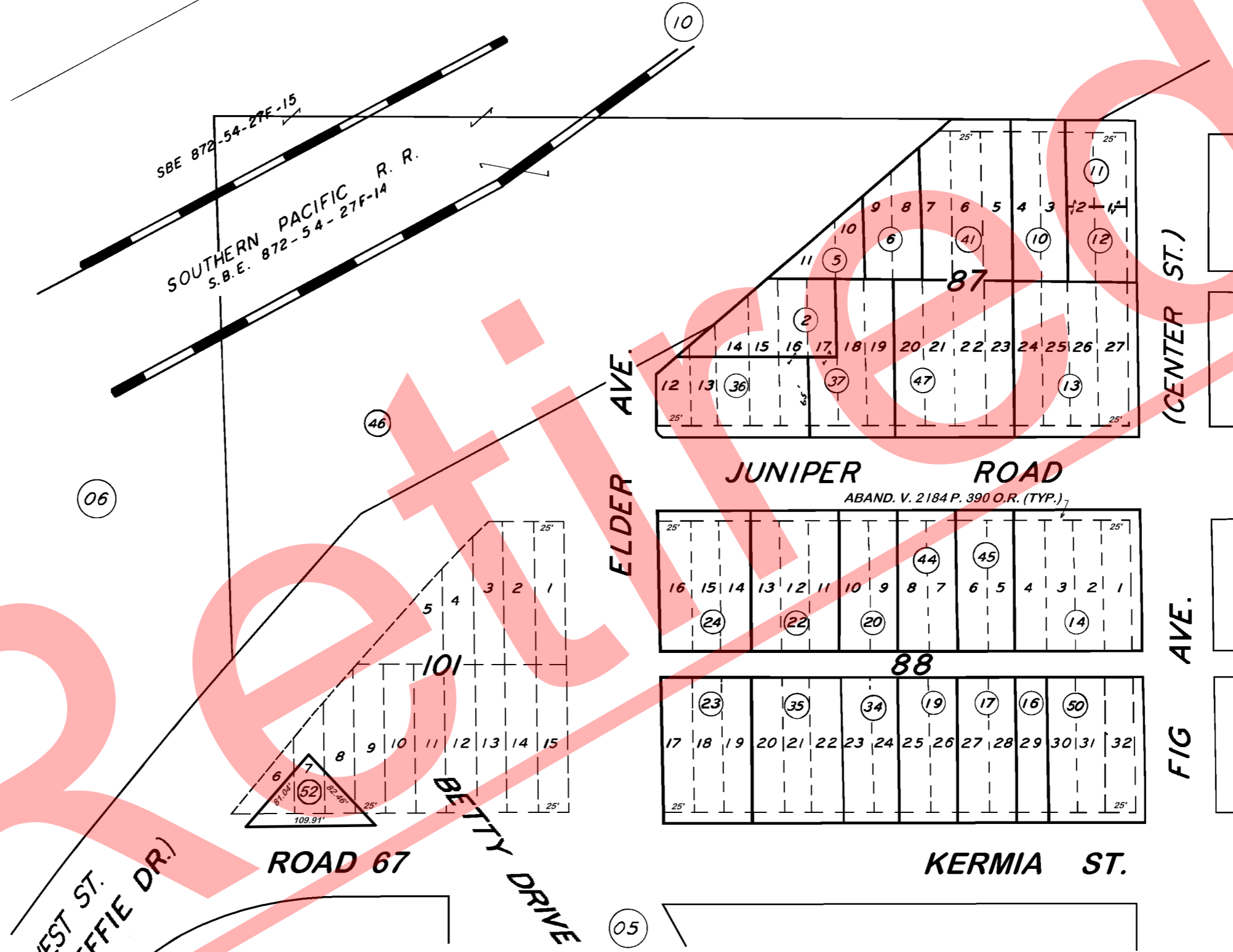
TAX CODE AREA **075 - 07**

153-060  
153-049



**DISCLAIMER**  
THIS MAP WAS PREPARED FOR LOCAL PROPERTY ASSESSMENT PURPOSES ONLY. THE PARCELS SHOWN HEREON MAY NOT COMPLY WITH STATE AND LOCAL SUBDIVISION ORDINANCES. NO LIABILITY IS ASSUMED FOR THE USE OF THE INFORMATION HEREON.

REVISED: 5/02/2019  
REASON: 2019-0009098  
CAD TECH: CFG



POR. GOSHEN TOWNSITE, R.M. 3-19  
POR. RECORD OF SURVEY, L.S. 27-25 (RIGGIN AVE., ETC.)

VICINITY OF GOSHEN  
ASSESSOR'S MAPS BK. 075, PG. 07.  
COUNTY OF TULARE, CALIF.

NOTE — ASSESSOR'S BLOCK NUMBERS SHOWN IN ELLIPSES  
ASSESSOR'S PARCEL NUMBERS SHOWN IN CIRCLES

