

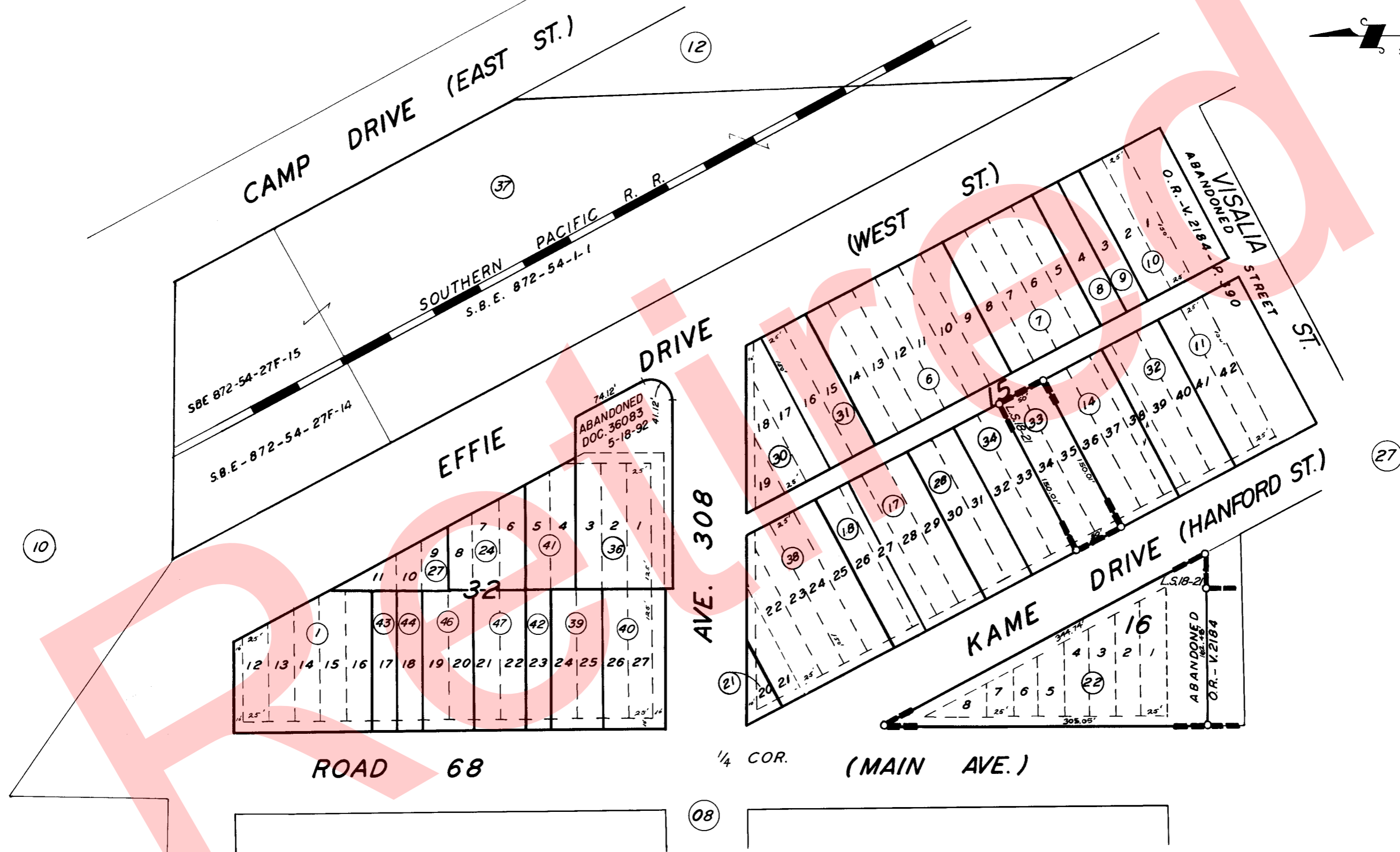
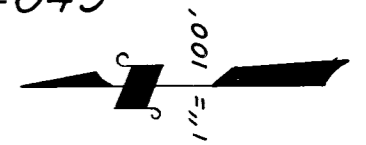
GOSHEN TOWNSHIP, ORIGINAL BLKS. 15, 16, & 32.

TAX CODE AREA

75-09

153-060

153-049



POR. RECORD OF SURVEY, L.S. 18-21
POR. GOSHEN TOWNSITE, R.M.-3-19.

ASSESSOR'S MAPS BK. 75, PG. 09.

NOTE: ABANDONMENTS REDUCING MOST 80' STREETS TO 60'
& 100' STREETS TO 80' RECORDED IN VOL 2184, PG. 390 O.R.

COUNTY OF TULARE, CALIF.

NOTE — ASSESSOR'S BLOCK NUMBERS SHOWN IN ELLIPSES
ASSESSOR'S PARCEL NUMBERS SHOWN IN CIRCLES

