

DISCLAIMER

THIS MAP WAS PREPARED FOR LOCAL PROPERTY ASSESSMENT PURPOSES ONLY. THE PARCELS SHOWN HEREON MAY NOT COMPLY WITH STATE AND LOCAL SUBDIVISION ORDINANCES. NO LIABILITY IS ASSUMED FOR THE USE OF THE INFORMATION HEREON.

REVISED: 09/10/2007
REASON: 2006-0056932
CAD TECH: JLC

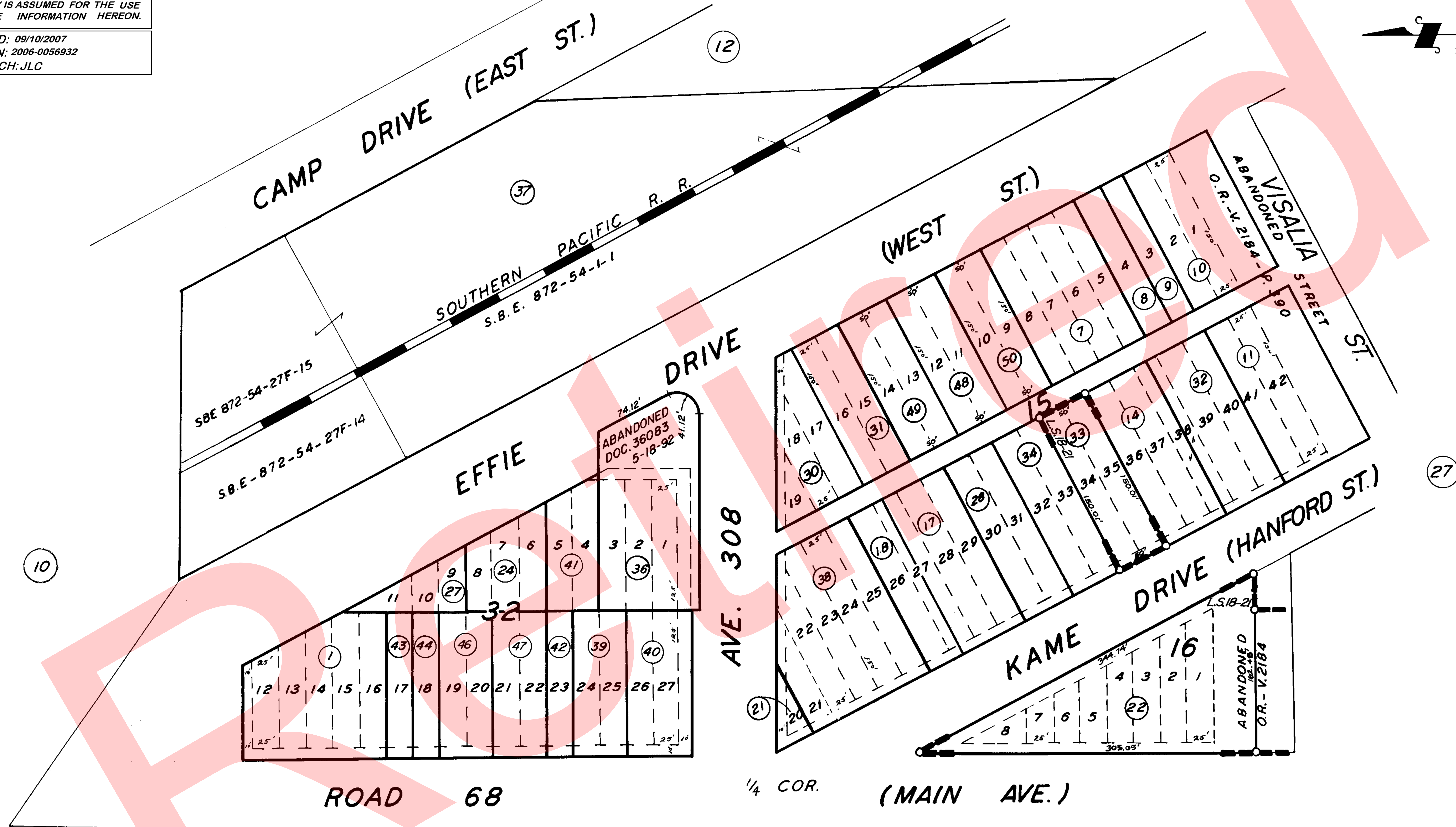
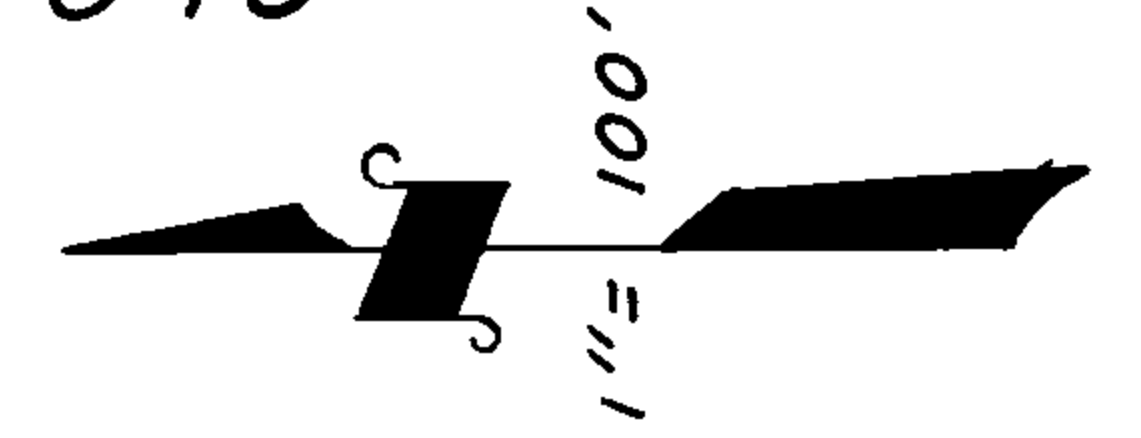
GOSHEN TOWNSHIP, ORIGINAL BLKS. 15, 16, & 32.

TAX CODE AREA

75-09

153-060

153-049



**POR. RECORD OF SURVEY, L.S. 18-21
POR. GOSHEN TOWNSITE, R.M.-3-19.**

ASSESSOR'S MAPS BK. 75, PG. 09.

COUNTY OF TULARE, CALIF.

NOTE: ABANDONMENTS REDUCING MOST 80' STREETS TO 60'
& 100' STREETS TO 80' RECORDED IN VOL 2184, PG. 390 O.R.

NOTE — ASSESSOR'S BLOCK NUMBERS SHOWN IN ELLIPSES
ASSESSOR'S PARCEL NUMBERS SHOWN IN CIRCLES

