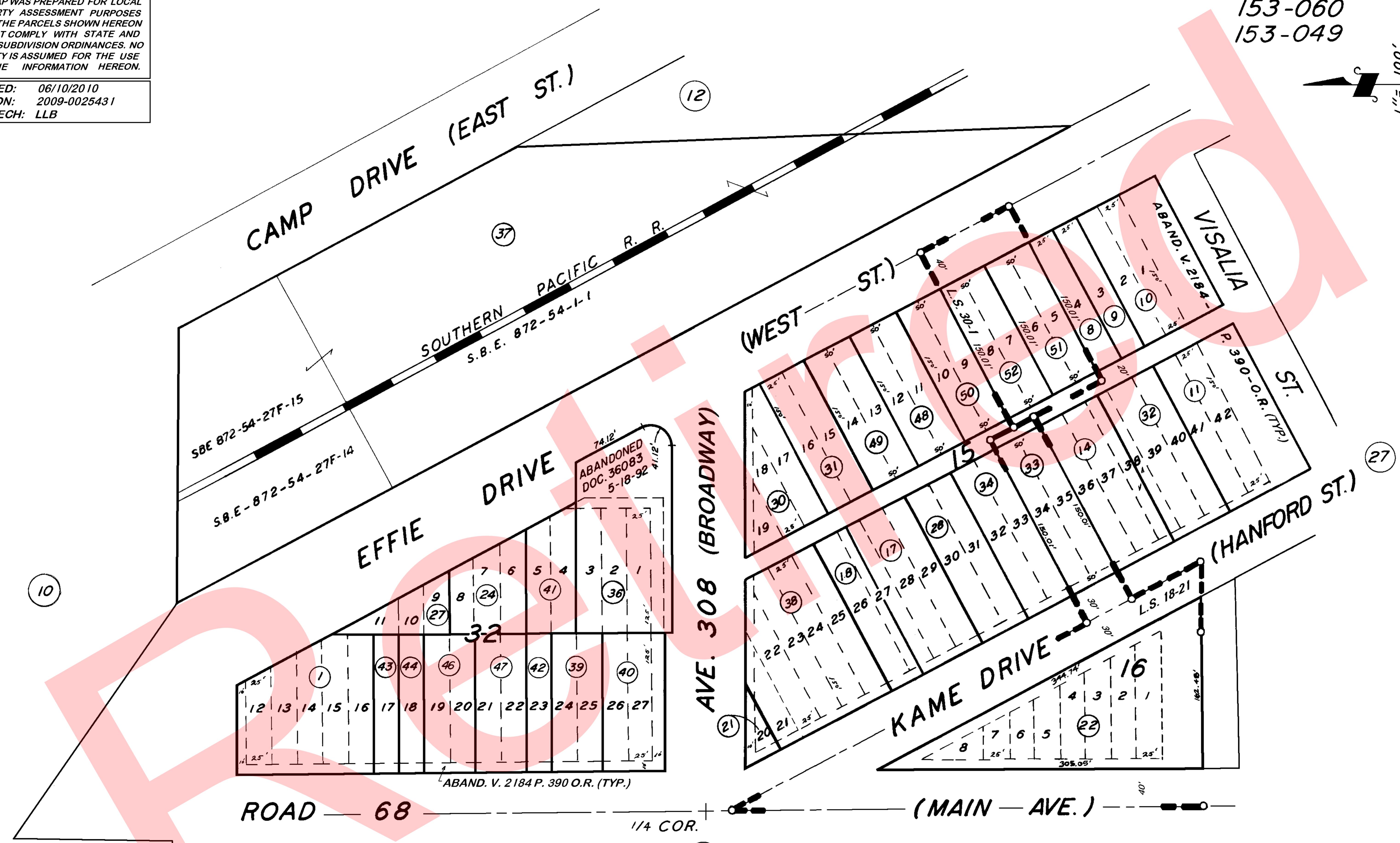
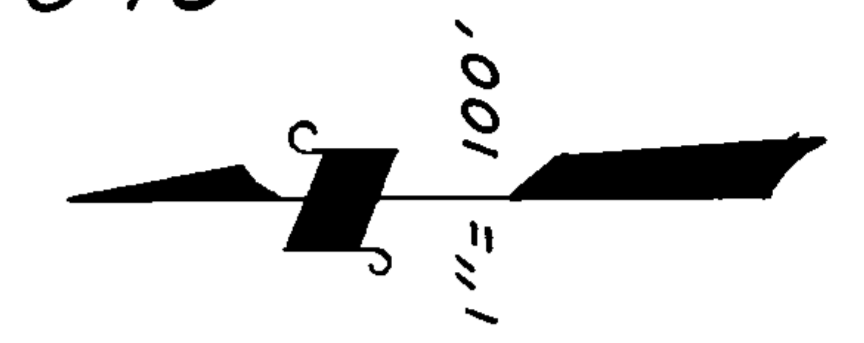


DISCLAIMER
 THIS MAP WAS PREPARED FOR LOCAL PROPERTY ASSESSMENT PURPOSES ONLY. THE PARCELS SHOWN HEREON MAY NOT COMPLY WITH STATE AND LOCAL SUBDIVISION ORDINANCES. NO LIABILITY IS ASSUMED FOR THE USE OF THE INFORMATION HEREON.

REVISED: 06/10/2010
 REASON: 2009-0025431
 CAD TECH: LLB

GOSHEN TOWNSHIP, ORIGINAL BLKS. 15, 16, & 32.

TAX CODE AREA **075-09**
 153-060
 153-049



POR. GOSHEN TOWNSITE, R.M. 3-19
POR. RECORD OF SURVEY, L.S. 18-21
RECORD OF SURVEY, L.S. 30-1

VICINITY OF GOSHEN
ASSESSOR'S MAPS BK. 075, PG. 09.
COUNTY OF TULARE, CALIF.

NOTE — ASSESSOR'S BLOCK NUMBERS SHOWN IN ELLIPSES
 ASSESSOR'S PARCEL NUMBERS SHOWN IN CIRCLES

