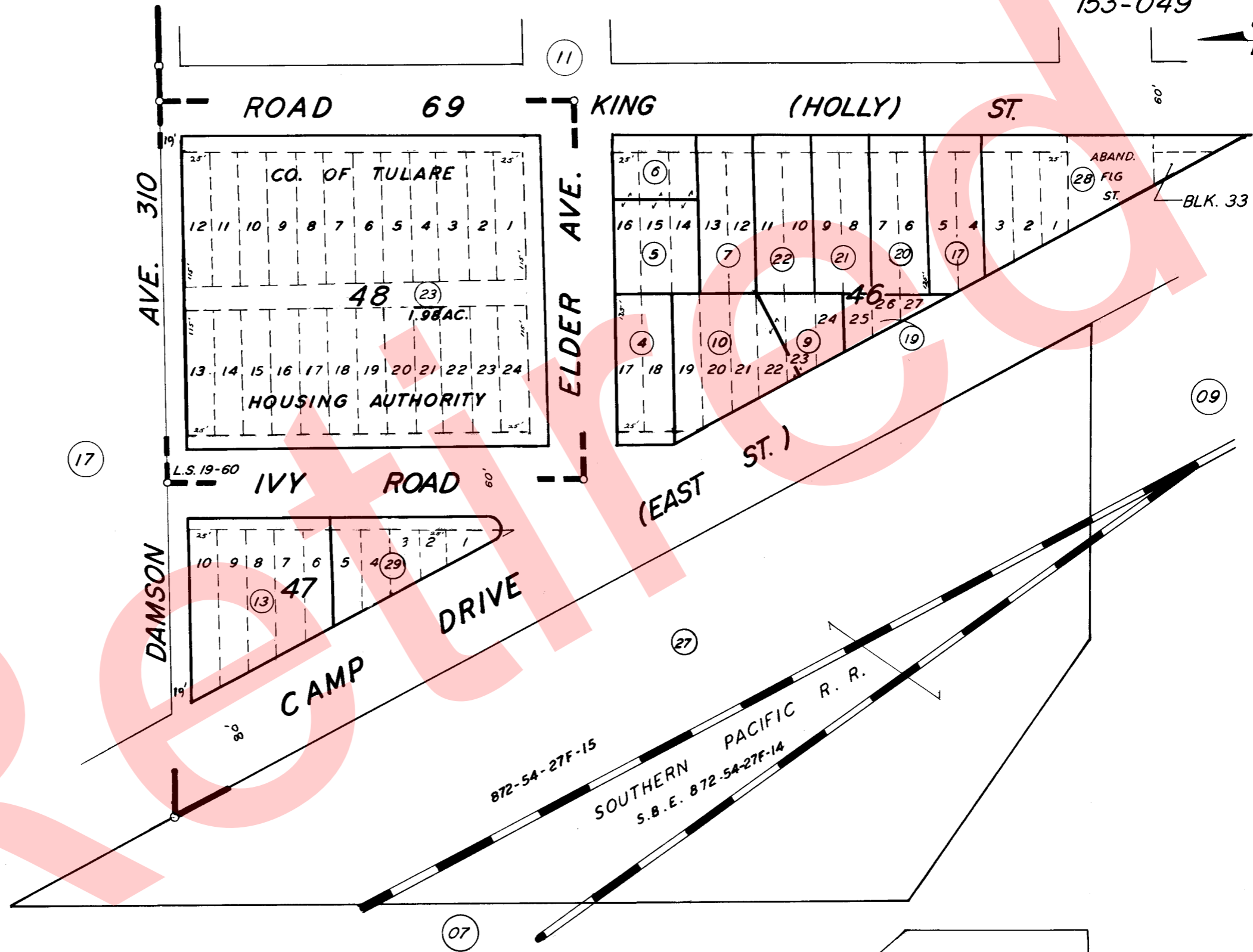
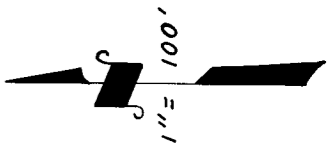


GOSHEN TOWNSITE, ORIGINAL BLKS. 46, 47 & 48.

TAX CODE AREA  
153-060  
153-049

75-10



RECORD OF SURVEY, L.S. 19-60 -  
POR. GOSHEN TOWNSITE, R.M. 3-19.

ASSESSOR'S MAPS BK. 75, PG. 10.

NOTE: ABANDONMENT REDUCING MOST 80'  
STREETS TO 60' & 100' STREETS TO 80' RECORDED  
IN VOL. 2184, PG. 390.Q.R.

COUNTY OF TULARE, CALIF.

NOTE - ASSESSOR'S BLOCK NUMBERS SHOWN IN ELLIPSES  
ASSESSOR'S PARCEL NUMBERS SHOWN IN CIRCLES

