

GOSHEN TOWNSITE, ORIGINAL BLKS. 46, 47 & 48.

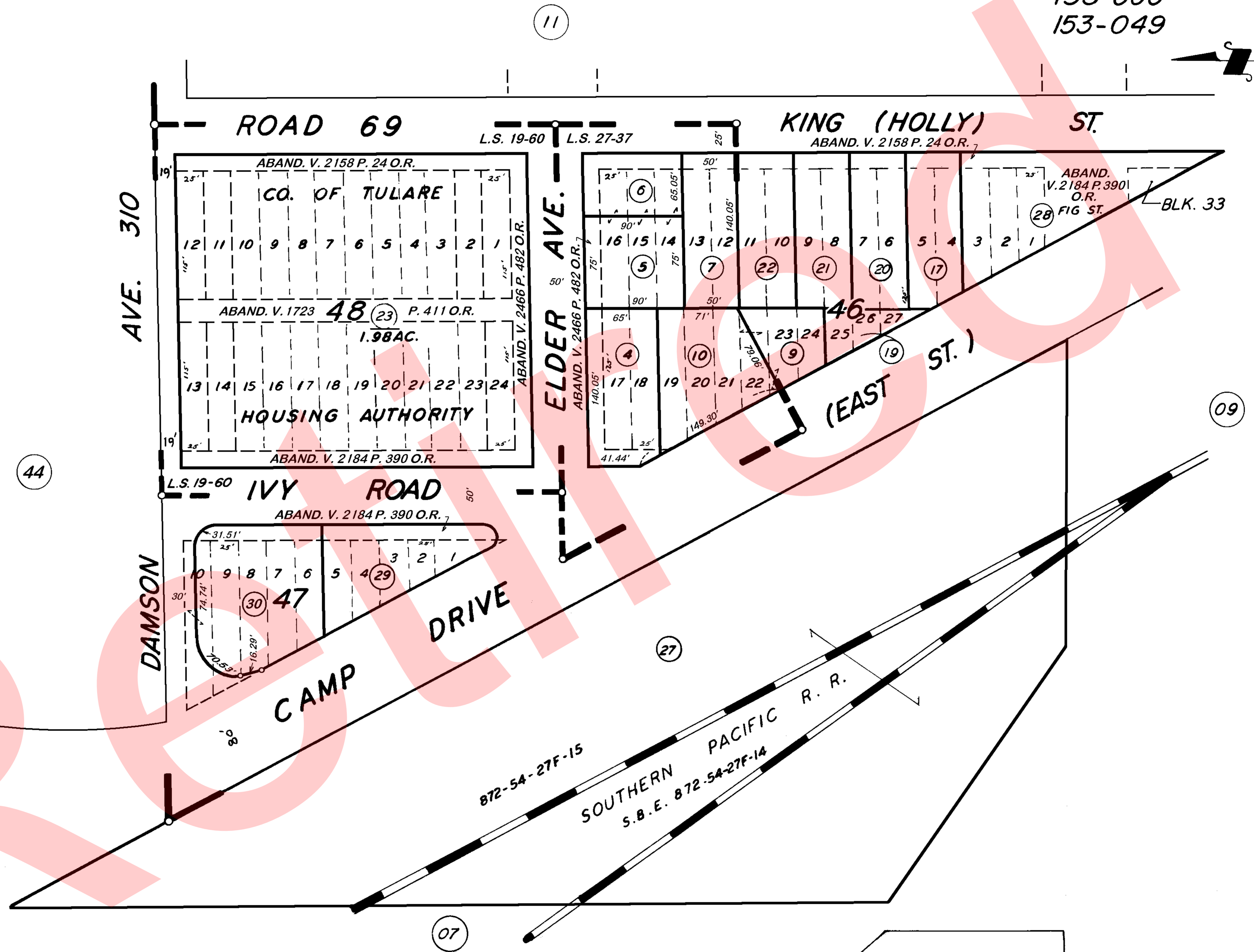
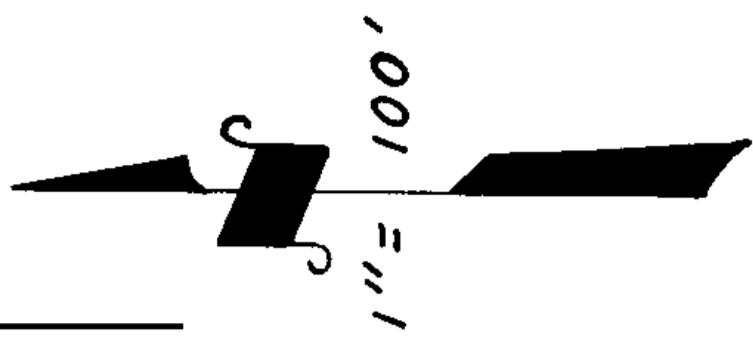
TAX CODE AREA **075-10**

153-060

153-049

DISCLAIMER
 THIS MAP WAS PREPARED FOR LOCAL PROPERTY ASSESSMENT PURPOSES ONLY. THE PARCELS SHOWN HEREON MAY NOT COMPLY WITH STATE AND LOCAL SUBDIVISION ORDINANCES. NO LIABILITY IS ASSUMED FOR THE USE OF THE INFORMATION HEREON.

REVISED: 06/29/2011
 REASON: 2010-0051240
 CAD TECH: LLB



POR. GOSHEN TOWNSITE, R.M. 3-19
 RECORD OF SURVEY, L.S. 19-60
 RECORD OF SURVEY, L.S. 27-37

VICINITY OF GOSHEN
 ASSESSOR'S MAPS BK. 075, PG. 10.
 COUNTY OF TULARE, CALIF.

NOTE — ASSESSOR'S BLOCK NUMBERS SHOWN IN ELLIPSES
 ASSESSOR'S PARCEL NUMBERS SHOWN IN CIRCLES

