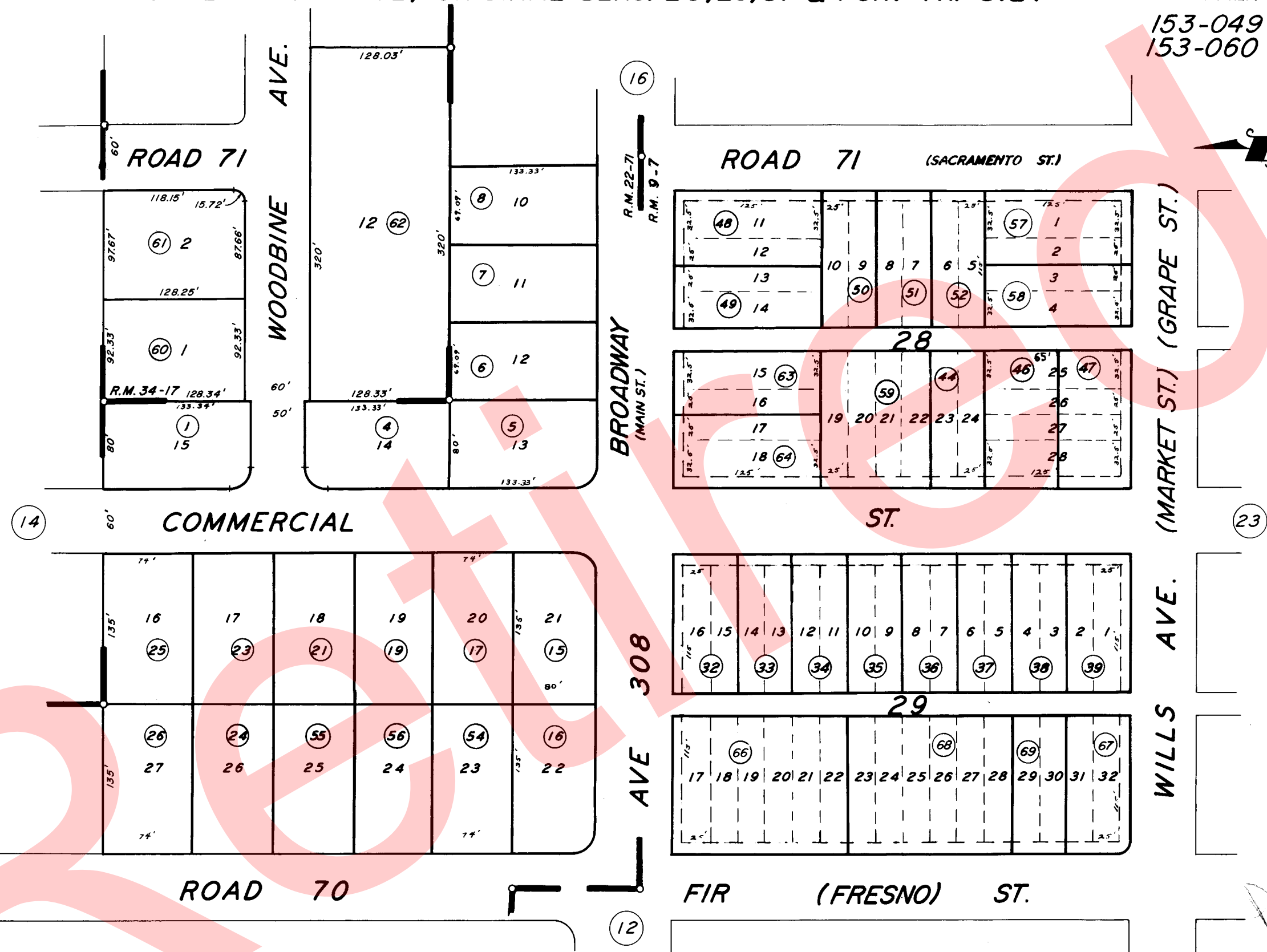


153-049
153-060



NOTE: ABANDONMENT REDUCING MOST 80' STREETS TO 60 & 100' STREETS TO 80' RECORDED IN VOL. 218-1, PG. 390 O.R.

POR. RESUB. OF POR. GOSHEN TOWNSITE, R.M. 9-7
POR. TRACT 312, R.M. 22-71
POR. TRACT 668, R.M. 34-17

ASSESSOR'S MAPS BK. 75, PG. 13.

COUNTY OF TULARE, CALIF.

NOTE — ASSESSOR'S BLOCK NUMBERS SHOWN IN ELLIPSES
ASSESSOR'S PARCEL NUMBERS SHOWN IN CIRCLES

AUTO CAD
4/21/01