

S. 100 AC. OF SE 1/4 SEC. 19, T.18S., R.24E., M.D.B.&M.

TAX CODE AREA **75-19**

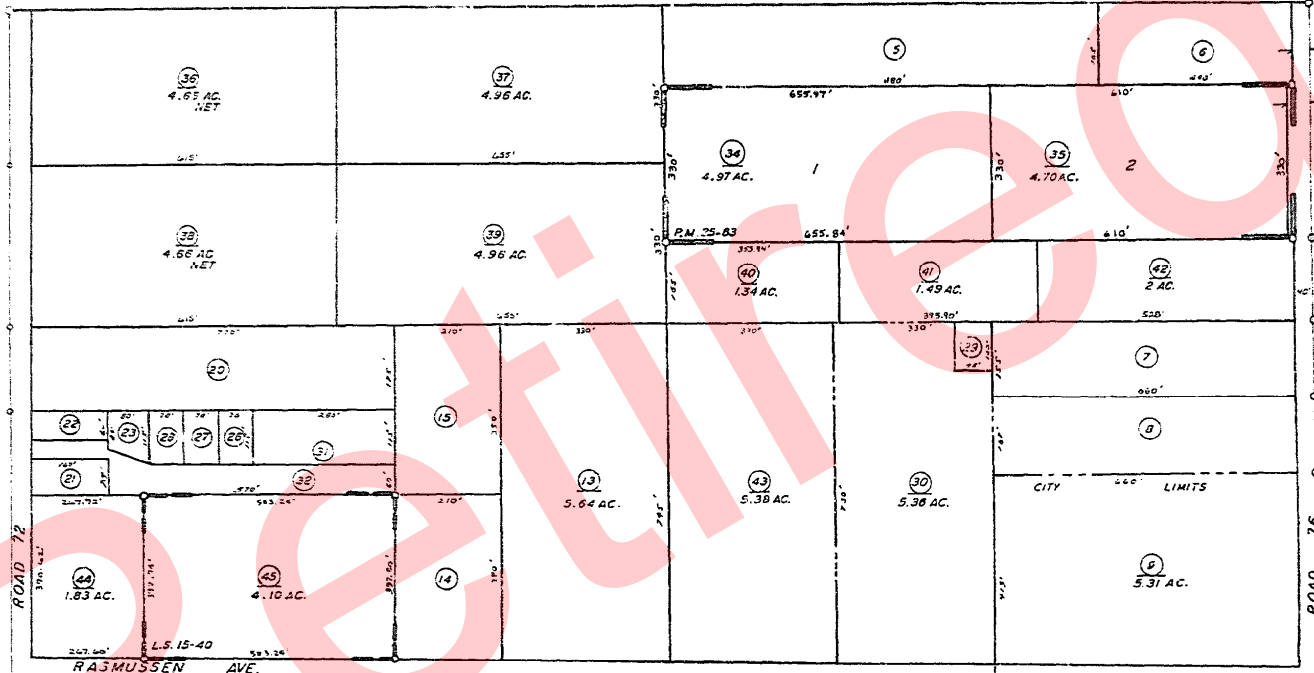
153-059, 153-007

153-060, 153-049

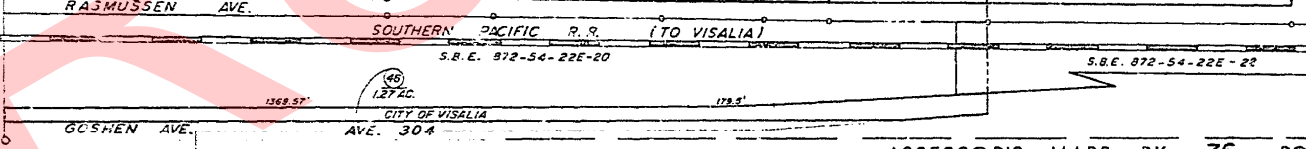
6-015, 153-121

SE. COR. OF N 60 AC. N. OF RR

(18)



BK.77



PARCEL MAP 2482, P.M. 25-83
RECORD OF SURVEY, L.S. 15-40

ASSESSOR'S MAPS BK. 75, PG. 19
COUNTY OF TULARE, CALIF. 29

BK.73

NOTE - ASSESSOR'S BLOCK NUMBERS SHOWN IN ELLIPSES
ASSESSOR'S PARCEL NUMBERS SHOWN IN CIRCLES