

DISCLAIMER

THIS MAP WAS PREPARED FOR LOCAL PROPERTY ASSESSMENT PURPOSES ONLY. THE PARCELS SHOWN HEREON MAY NOT COMPLY WITH STATE AND LOCAL SUBDIVISION ORDINANCES. NO LIABILITY IS ASSUMED FOR THE USE OF THE INFORMATION HEREON.

REVISED: 07/12/2007
REASON: INACTIVATE-046
CAD TECH: PHN

S. 100 AC. OF SE 1/4 SEC. 19, T.18S., R.24E., M.D.B.&M.

TAX CODE AREA
006-015 006-222 006-224
153-007 153-049 153-059
153-060 153-121

075-19

SE. COR. OF N. 60 AC. N. OF RR.

(18)

(21)

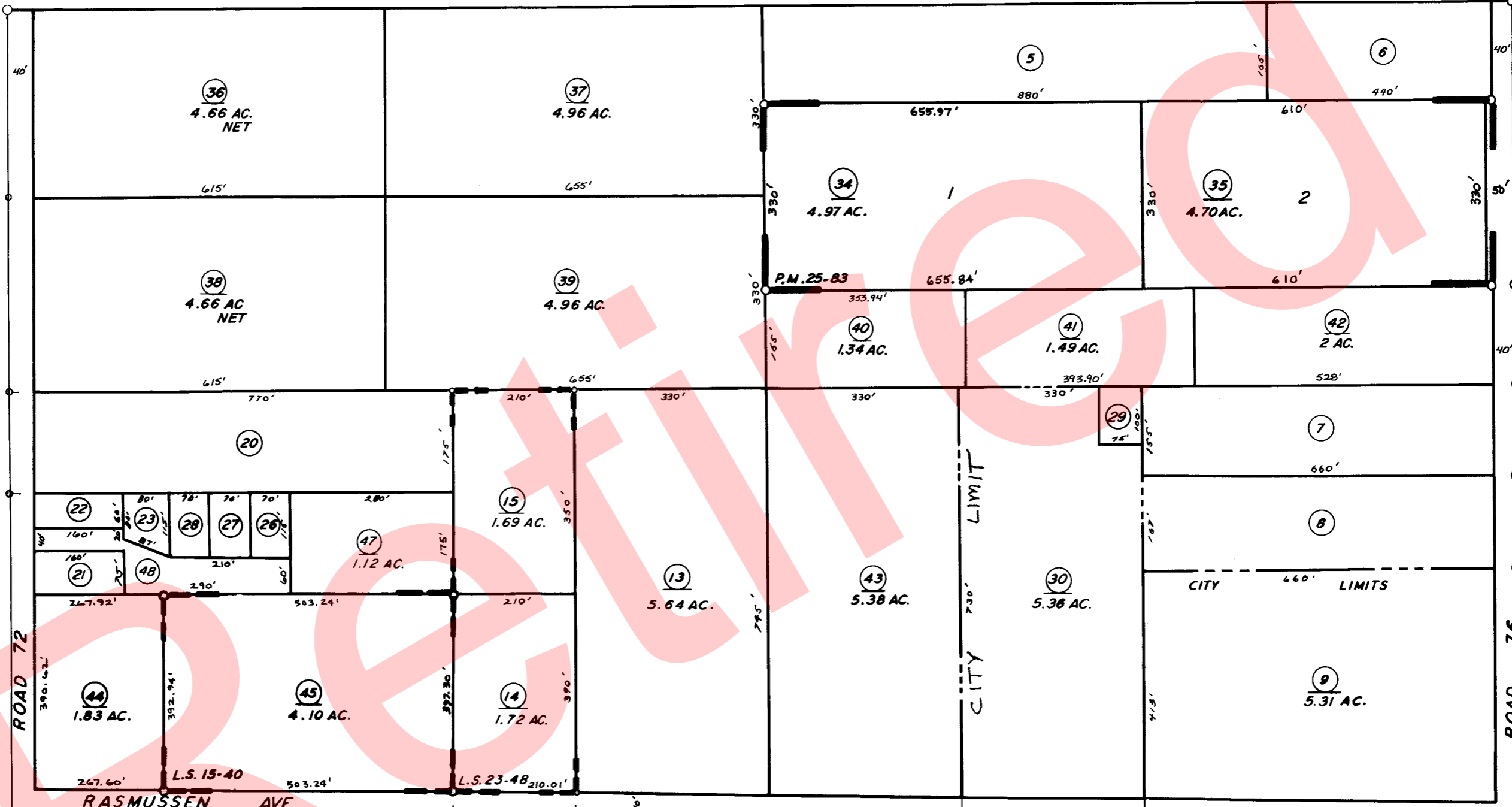
(22)

1" = 200'

BK.077

20

19.
29



ROAD 72

ROAD 76

RASMUSSEN AVE.

SOUTHERN PACIFIC R.R. (TO VISALIA)

GOSHEN AVE.

CITY OF VISALIA

AVE. 304

S 1/4 COR.

PARCEL MAP 2482 P.M. 25-83
RECORD OF SURVEY L.S. 15-40
RECORD OF SURVEY L.S. 23-48

(BK.073)

ASSESSOR'S MAPS BK. 075, PG. 30

COUNTY OF TULARE, CALIF.

NOTE — ASSESSOR'S BLOCK NUMBERS SHOWN IN ELLIPSES
ASSESSOR'S PARCEL NUMBERS SHOWN IN CIRCLES