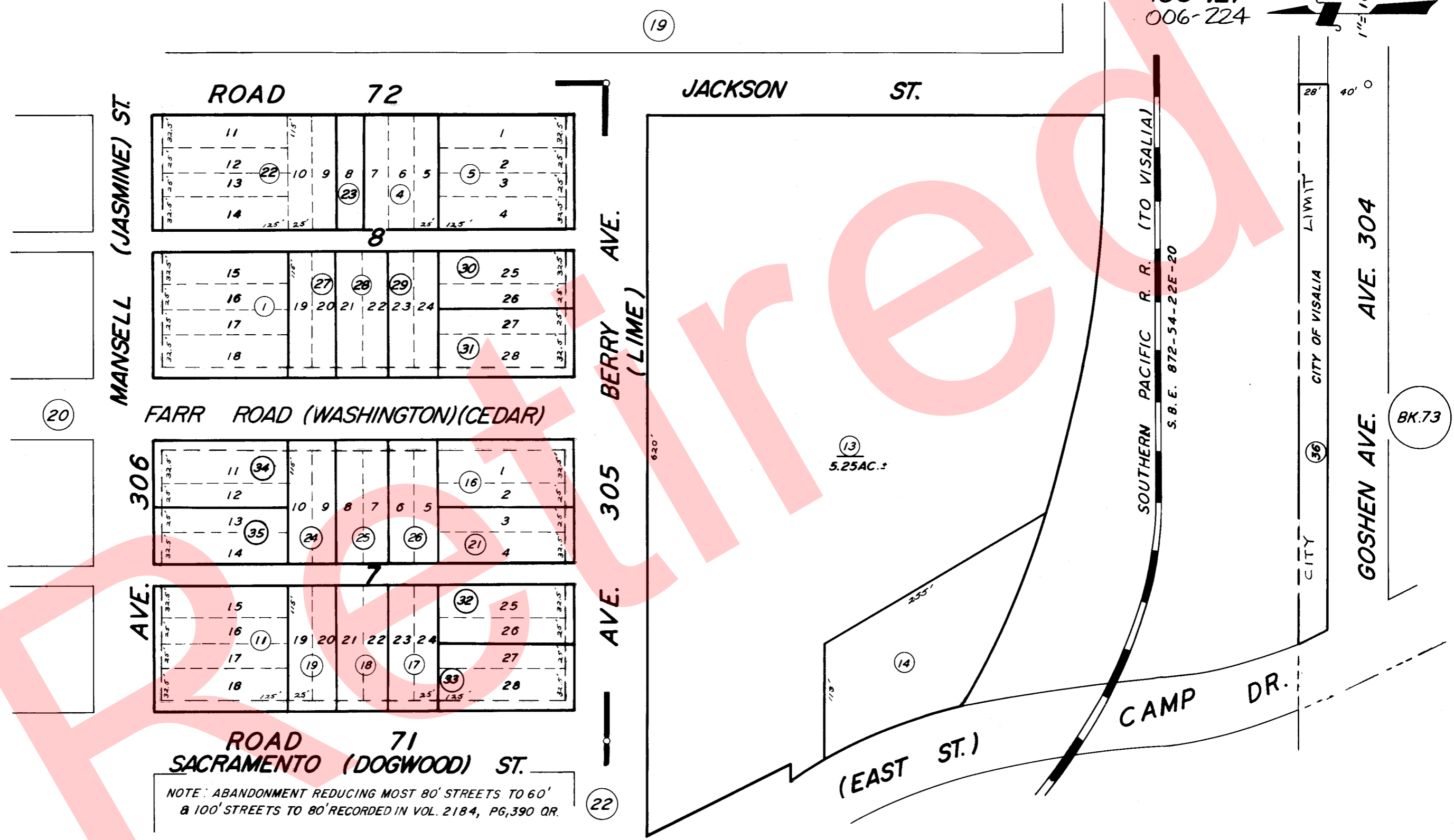
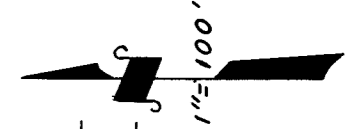


GOSHEN TOWNSITE, ORIGINAL BLKS. 7 & 8, & POR. SE 1/4 OF SW 1/4 SEC. 19, T.18S., R. 24E., M.D.B.&M.

TAX CODE AREA **75-21**
 153-049
 153-121
 006-224



NOTE: ABANDONMENT REDUCING MOST 80' STREETS TO 60' & 100' STREETS TO 80' RECORDED IN VOL. 2184, PG. 390 OR.

POR. RESUB. OF A POR. GOSHEN TOWNSITE R.M. 9-7

ASSESSOR'S MAPS BK. 75, PG. 21.

COUNTY OF TULARE, CALIF.

NOTE — ASSESSOR'S BLOCK NUMBERS SHOWN IN ELLIPSES
 ASSESSOR'S PARCEL NUMBERS SHOWN IN CIRCLES