

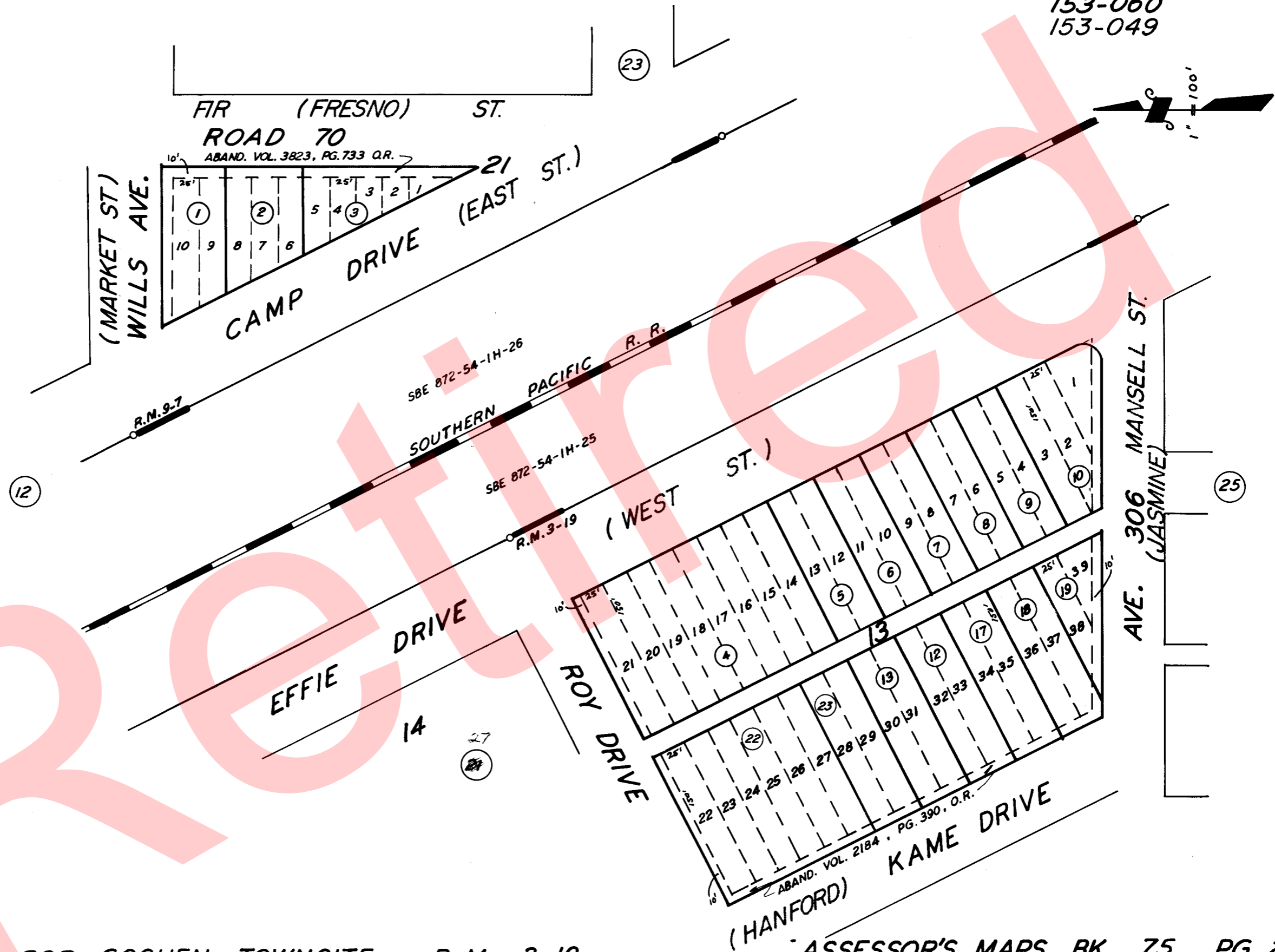
GOSHEN TOWNSITE, ORIGINAL BLKS. 13 & 21

TAX CODE AREA

75-24

153-060

153-049



POR. GOSHEN TOWNSITE, R.M. 3-19

POR. RESUB. OF GOSHEN TOWNSITE

R.M. 9-7

ASSESSOR'S MAPS BK. 75 PG. 24

COUNTY OF TULARE, CALIF.

NOTE-ASSESSOR'S BLOCK NUMBERS SHOWN IN ELIPSES
ASSESSOR'S PARCEL NUMBERS SHOWN IN CIRCLES