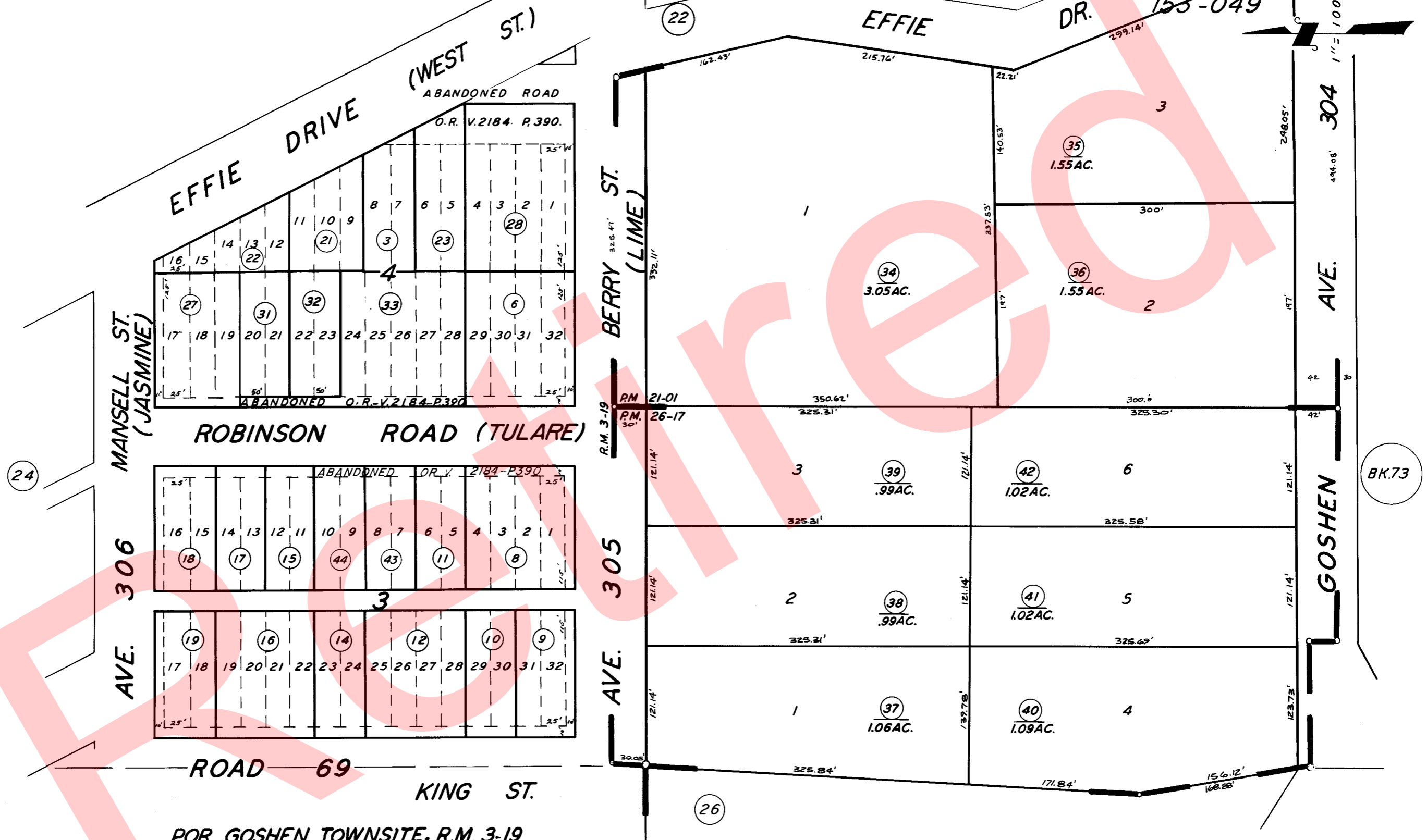


GOSHEN TOWNSITE, ORIGINAL BLKS. 3 & 4 & POR. S 1/2 OF SW 1/4
 OF SW 1/4 SEC. 19, T.18S., R.24E., M.D.B. & M.

TAX CODE AREA
 153-060
 153-049

75-25



POR. GOSHEN TOWNSITE, R.M. 3-19
 PARCEL MAP 2000, P.M. 21-01
 PARCEL MAP 2516, P.M. 26-17

ASSESSOR'S MAPS BK. 75, PG. 25.

COUNTY OF TULARE, CALIF.

NOTE — ASSESSOR'S BLOCK NUMBERS SHOWN IN ELLIPSES
 ASSESSOR'S PARCEL NUMBERS SHOWN IN CIRCLES