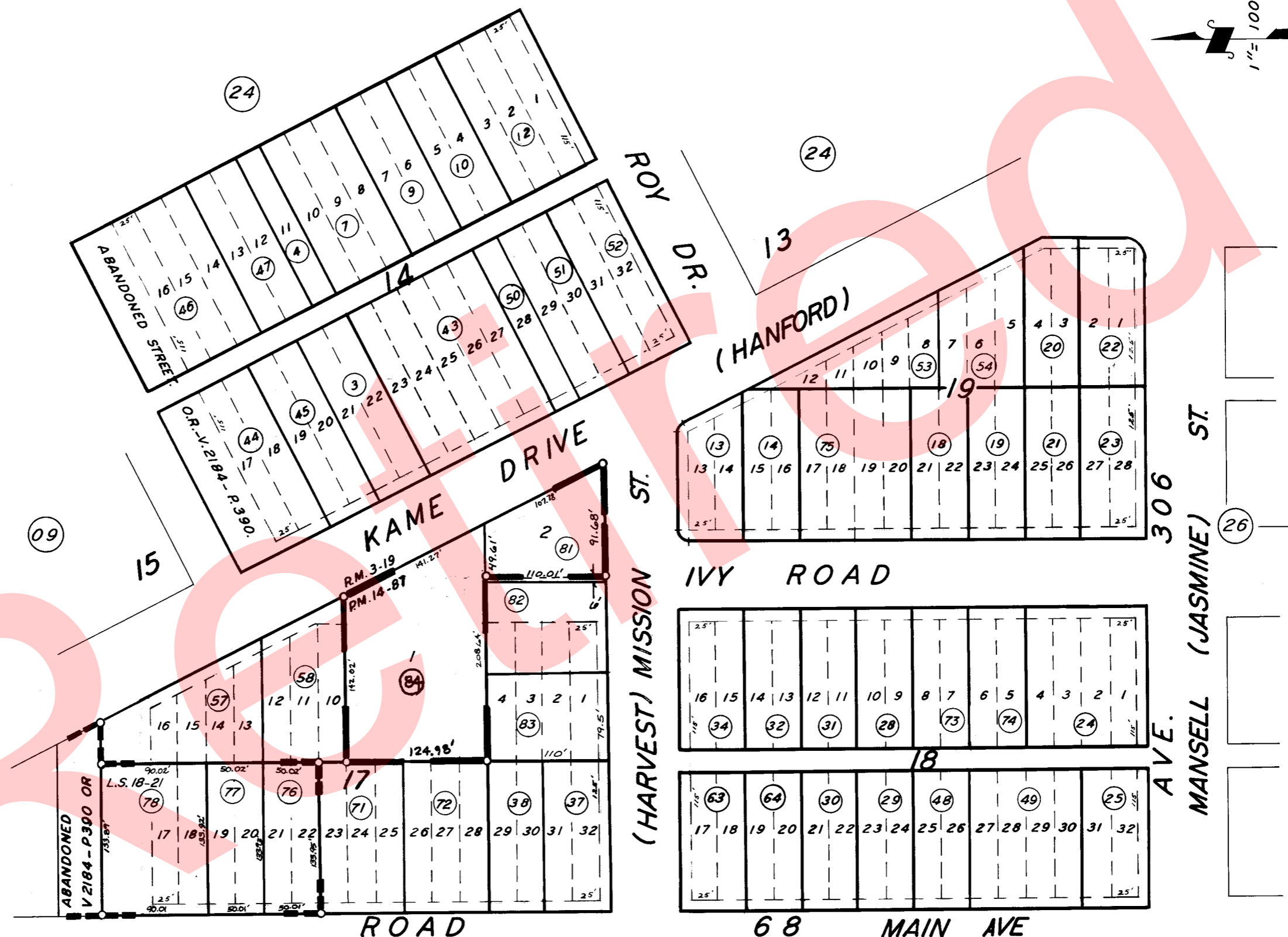
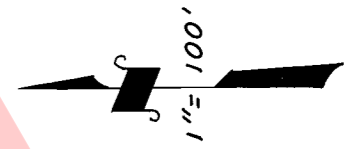


# GOSHEN TOWNSITE, ORIGINAL BLKS. 14, 17, 18, 19 & 20.

TAX CODE AREA **75-27**  
153-060  
153-049



NOTE: ABANDONMENT REDUCING MOST 80' STREETS TO 60' & 100' STREETS TO 80' RECORDED IN VOL. 2184, PAGE 390 O.R.

POR. RECORD OF SURVEY, L.S. 18-21  
POR. OF TOWNSITE OF GOSHEN R.M. 3-19  
PARCEL MAP 1386, P.M. 14-87

ASSESSOR'S MAPS BK. 75, PG. 27.

COUNTY OF TULARE, CALIF.

NOTE - ASSESSOR'S BLOCK NUMBERS SHOWN IN ELLIPSES  
ASSESSOR'S PARCEL NUMBERS SHOWN IN CIRCLES

