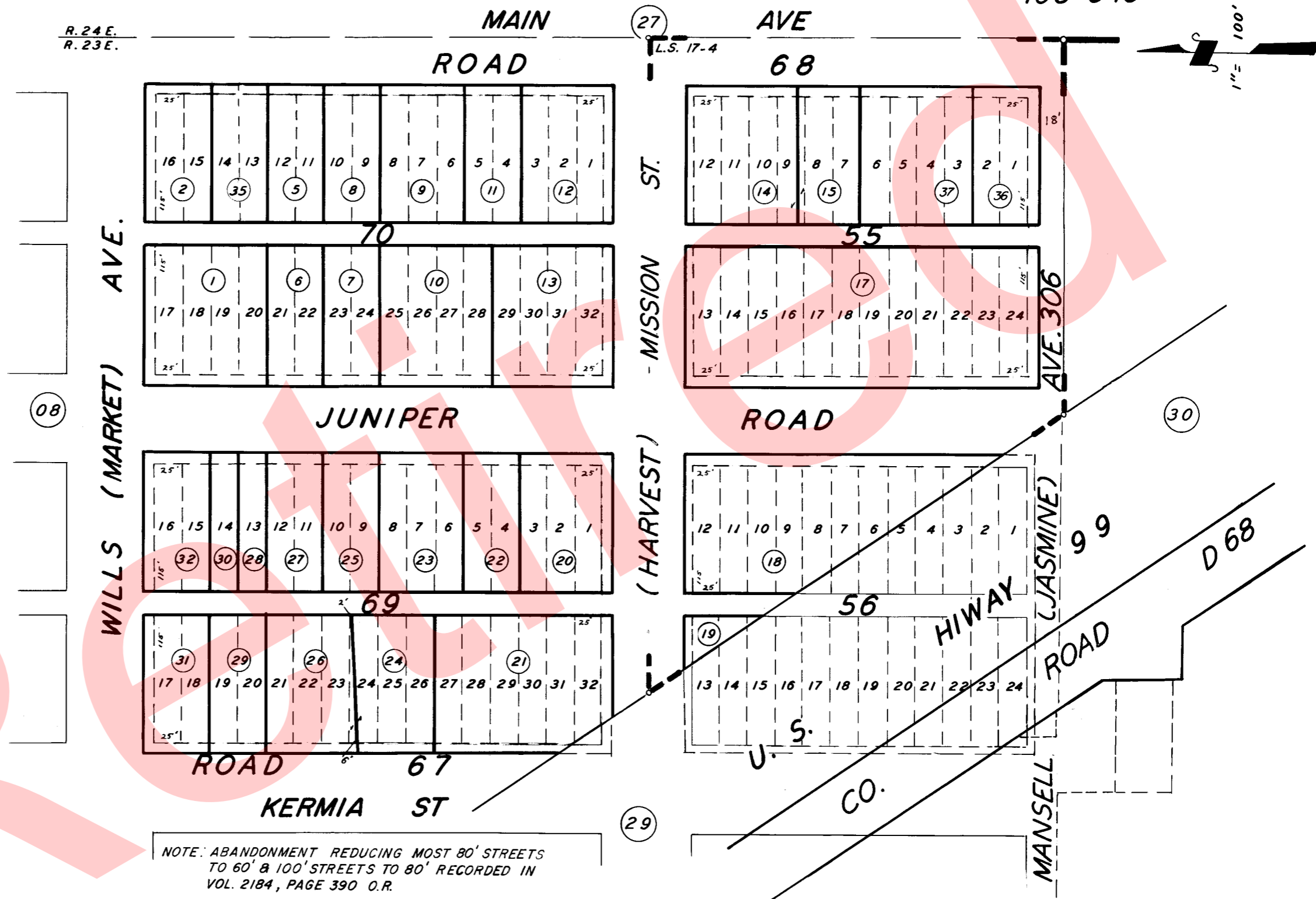
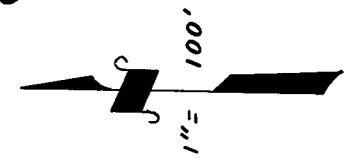


153-060  
153-049

R. 24 E.  
R. 23 E.



NOTE: ABANDONMENT REDUCING MOST 80' STREETS TO 60' & 100' STREETS TO 80' RECORDED IN VOL. 2184, PAGE 390 O.R.

RECORD OF SURVEY R.M. 17-4  
POR. OF GOSHEN. R.M. 3-19

ASSESSOR'S MAPS BK. 75, PG. 28.

COUNTY OF TULARE, CALIF.

NOTE - ASSESSOR'S BLOCK NUMBERS SHOWN IN ELLIPSES  
ASSESSOR'S PARCEL NUMBERS SHOWN IN CIRCLES

