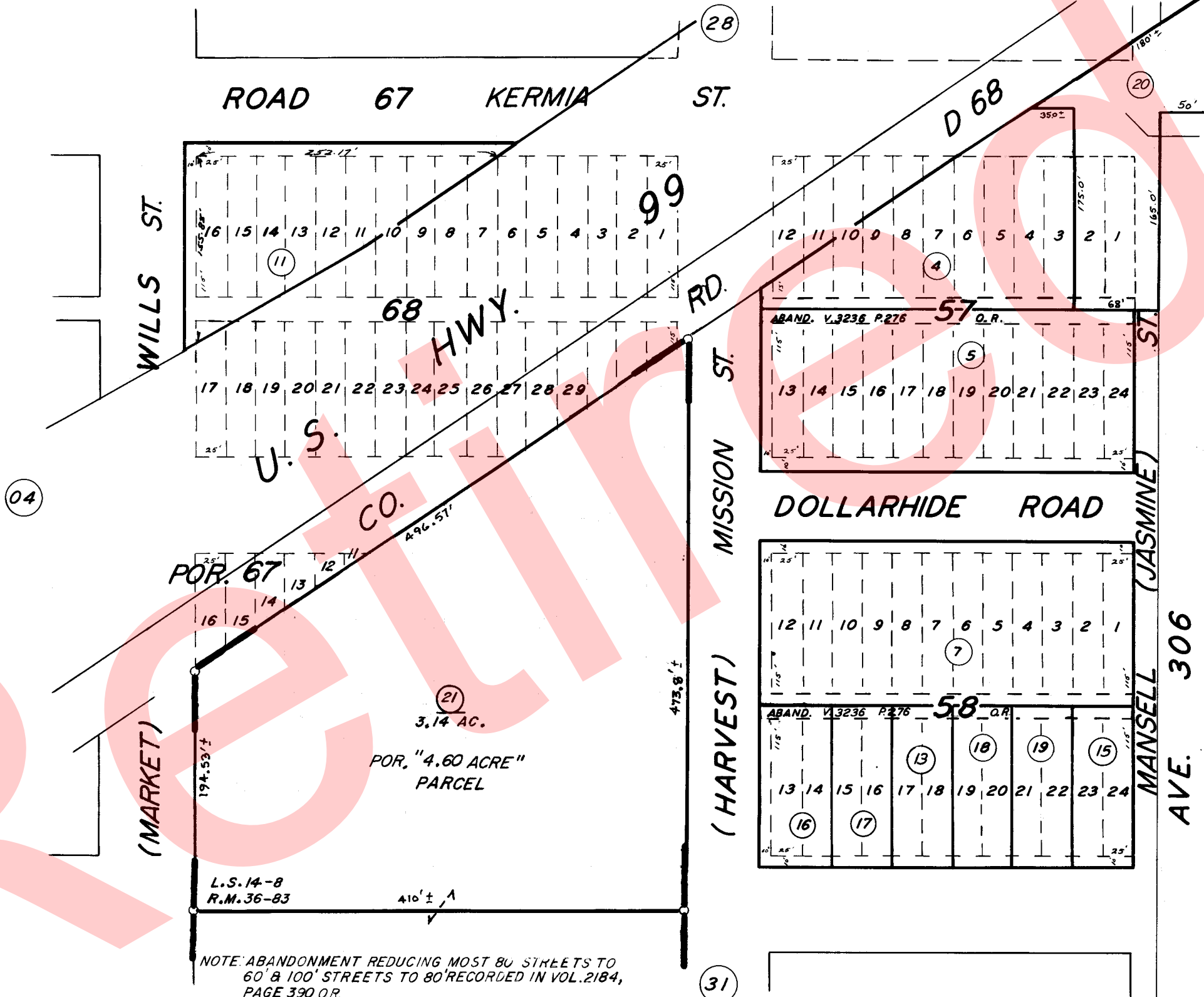
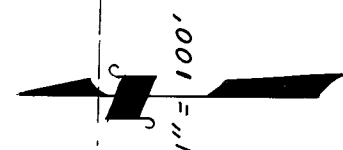


153-060
153-049



ABANDONED ROAD
VOL. 2184 PG. 390
VOL. 4648 PG. 676

NOTE: ABANDONMENT REDUCING MOST 80' STREETS TO 60' & 100' STREETS TO 80' RECORDED IN VOL. 2184, PAGE 390 O.R.

POR. RECORD OF SURVEY, L.S. 14-8
POR. GOSHEN TOWNSITE, R.M. 3-19. ASSESSOR'S MAPS BK. 75, PG. 29.
POR. REVERSION TO ACREAGE, R.M. 36-83
COUNTY OF TULARE, CALIF.

NOTE - ASSESSOR'S BLOCK NUMBERS SHOWN IN ELLIPSES
ASSESSOR'S PARCEL NUMBERS SHOWN IN CIRCLES