

GOSHEN TOWNSITE, ORIGINAL BLKS. 77, 78, & POR. 79 & 80

TAX CODE AREA

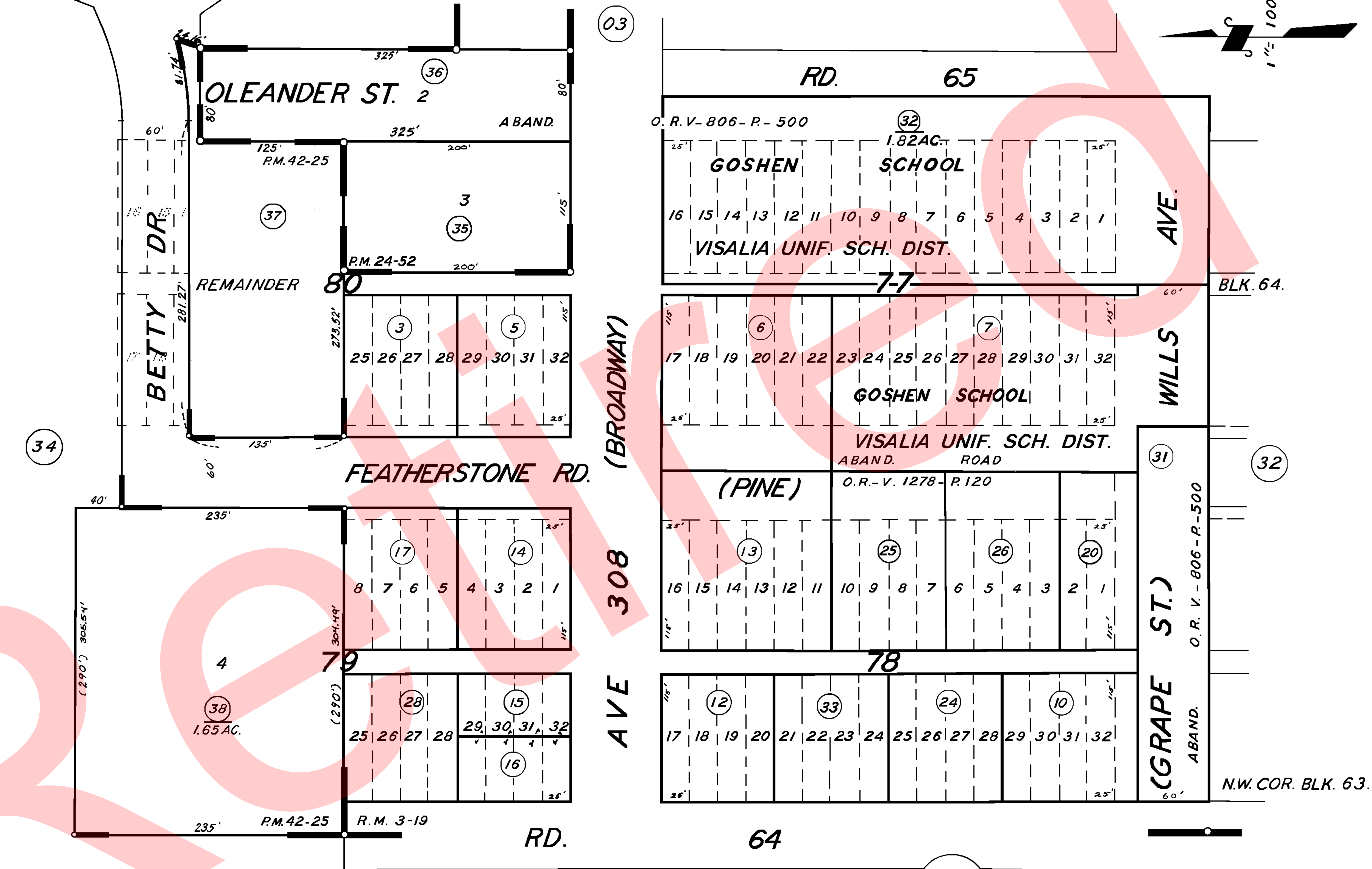
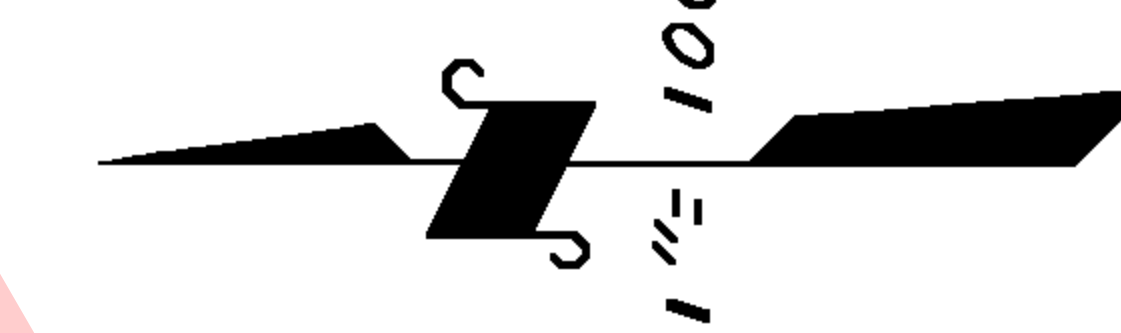
75-33

153-060

153-049

**DISCLAIMER**  
 THIS MAP WAS PREPARED FOR LOCAL PROPERTY ASSESSMENT PURPOSES ONLY. THE PARCELS SHOWN HEREON MAY NOT COMPLY WITH STATE AND LOCAL SUBDIVISION ORDINANCES. NO LIABILITY IS ASSUMED FOR THE USE OF THE INFORMATION HEREON.

REVISED: 07/27/2009  
 REASON: REVISED APNS 007 & 032  
 CAD TECH: CBT



POR. GOSHEN TOWNSITE R.M. 3-19  
 POR. PARCEL MAP 2351 P.M. 24-52  
 POR. PARCEL MAP 4121 P.M. 42-25

NOTE: ABANDONMENT REDUCING MOST 80' STREETS TO 60' & 100' STREETS TO 80' RECORDED IN VOL 2184, PAGE 390 OR.

ASSESSOR'S MAPS BK. 75, PG. 33.

COUNTY OF TULARE, CALIF.

NOTE - ASSESSOR'S BLOCK NUMBERS SHOWN IN ELLIPSES  
 ASSESSOR'S PARCEL NUMBERS SHOWN IN CIRCLES

