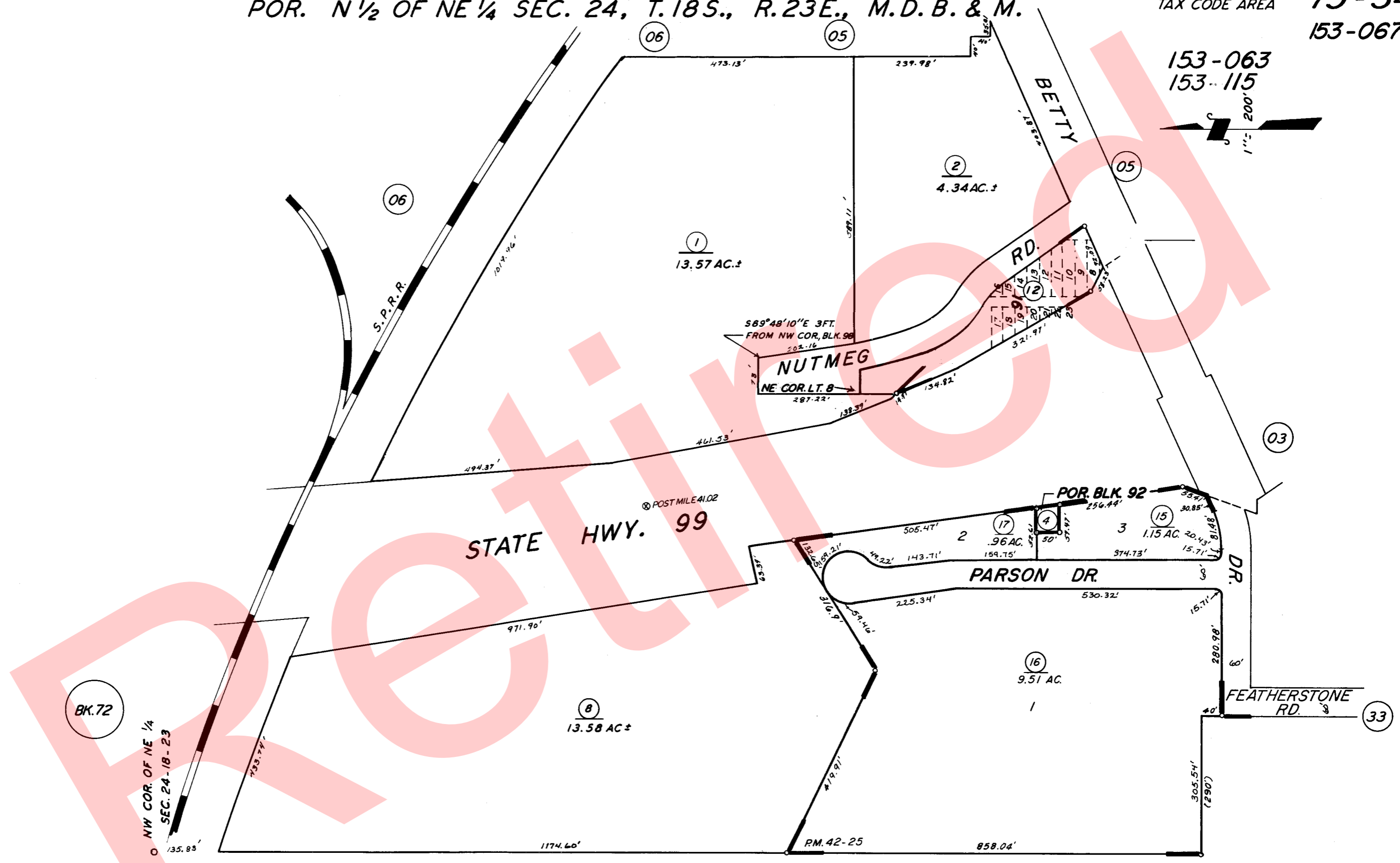
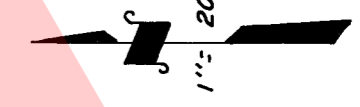


POR. N 1/2 OF NE 1/4 SEC. 24, T.18S., R.23E., M.D.B. & M.

TAX CODE AREA 75-34
153-067

153-063
153-115



POR. PARCEL MAP 4121 PM. 42-25
POR. GOSHEN TOWNSITE R.M. 3-19

BK.73

ASSESSOR'S MAPS BK. 75, PG. 34
COUNTY OF TULARE, CALIF.

NOTE: ABANDONMENT REDUCING MOST 80' STREET TO
60' & 100' STREETS TO 80' RECORDED IN VOL.
2184, PG. 390 O.R.

NOTE-ASSESSOR'S BLOCK NUMBERS SHOWN IN ELIPSES
ASSESSOR'S PARCEL NUMBERS SHOWN IN CIRCLES