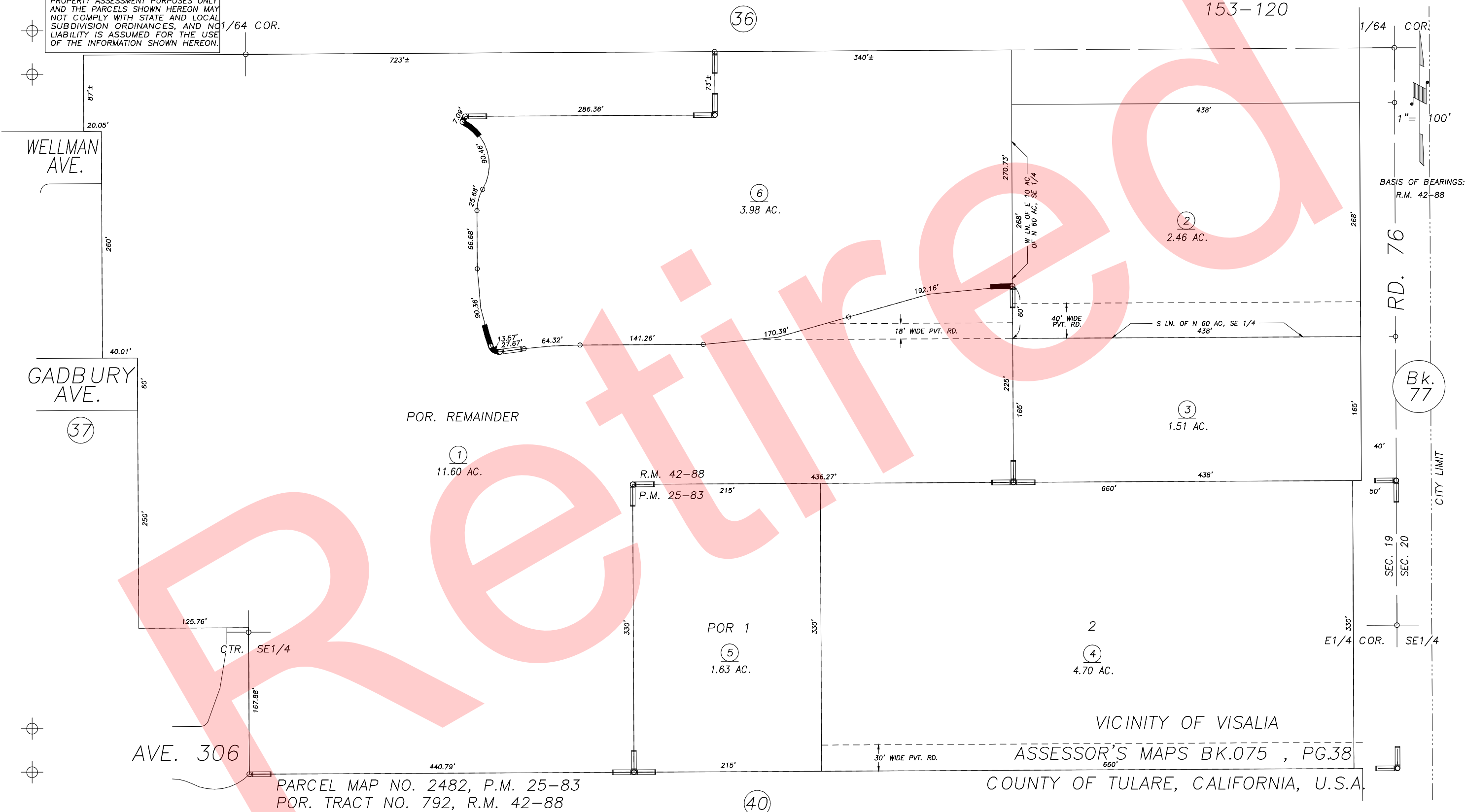


S1/2 OF NE1/4 OF SE1/4 SEC.19, T.18S., R.24E., M.D.B.&M.

Tax Area Codes 075-38
153-059
153-120

DISCLAIMER
THIS MAP WAS PREPARED FOR LOCAL PROPERTY ASSESSMENT PURPOSES ONLY AND THE PARCELS SHOWN HEREON MAY NOT COMPLY WITH STATE AND LOCAL SUBDIVISION ORDINANCES, AND NO LIABILITY IS ASSUMED FOR THE USE OF THE INFORMATION SHOWN HEREON.



PARCEL MAP NO. 2482, P.M. 25-83
POR. TRACT NO. 792, R.M. 42-88

ASSESSOR'S MAPS BK.075, PG.38

NOTE: Assessor's Parcel Numbers Shown in Circles
Assessor's Block Numbers Shown in Elipses

2009-009723	04/10/2009	JRS
REVISION	DATE	TECH