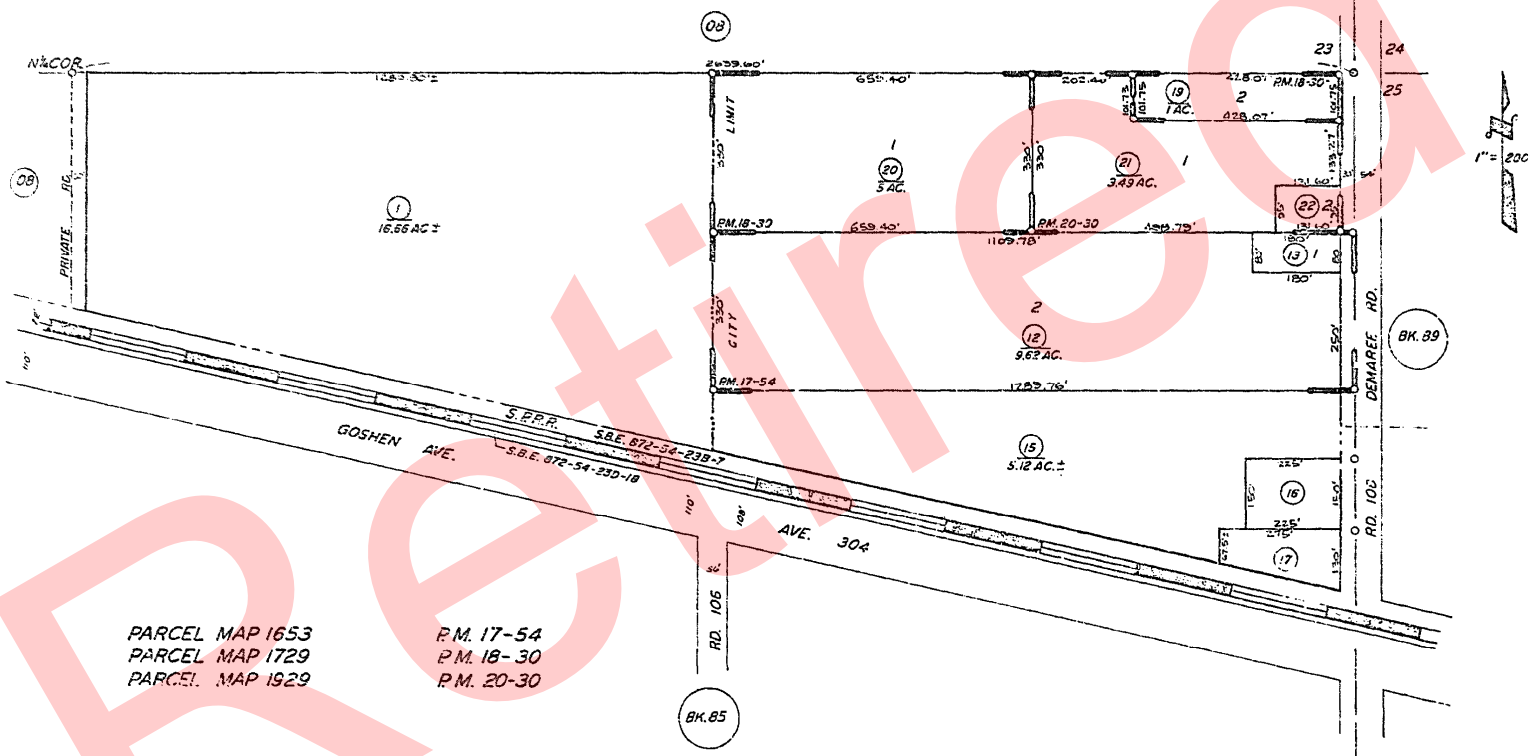


POR. NE <sup>1</sup>/<sub>4</sub> SEC. 26, T. 18 S., R. 24 E., M.D.B. & M.

TAX CODE AREA 77-09  
153-015  
6-123  
6-000  
6-200



PARCEL MAP 1653  
PARCEL MAP 1729  
PARCEL MAP 1929

P.M. 17-54  
P.M. 18-30  
P.M. 20-30

ASSESSOR'S MAPS BK. 77 PG. 09  
COUNTY OF TULARE, CALIF.

NOTE - ASSESSOR'S BLOCK NUMBERS SHOWN IN ELLIPSES  
ASSESSOR'S PARCEL NUMBERS SHOWN IN CIRCLES